

# Alaska Eskimo Whaling Commission Alaska LNG Project

---

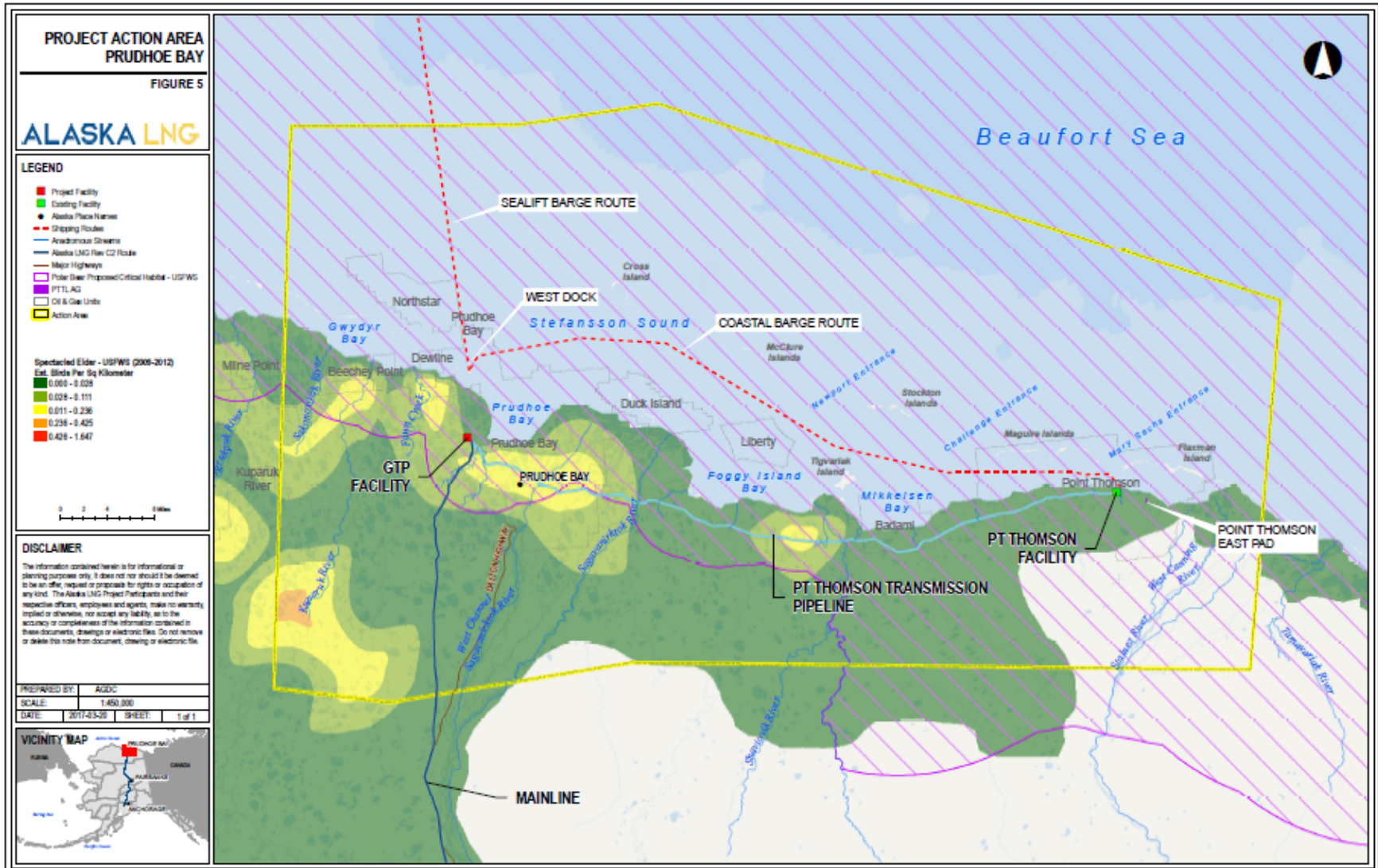
February 2021



- Alaska LNG Project Update
  - North Slope Activities
  - Barge Vessel Traffic
- Bowhead Whale Range & Migration Routes
  - Spring
  - Fall
- Marine Mammal Monitoring & Mitigation
  - Minimizing Impacts to Subsistence Users
- Whaling Captains Associations Outreach
- Future topics

## Alaska LNG Project Update

# Project Action Area – Prudhoe Bay



# Barge Vessel Activity

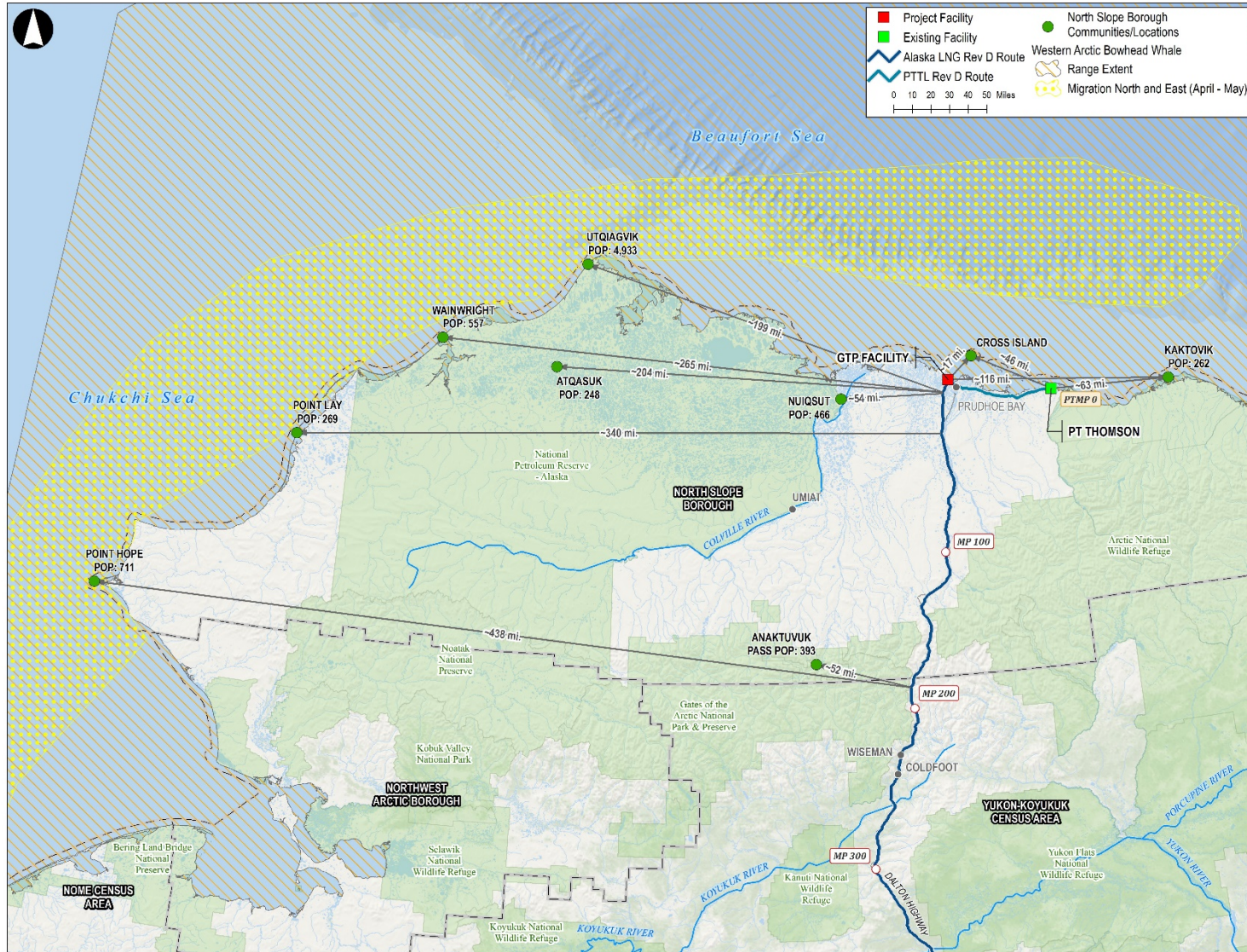
- Average of ~10 barges per year for 6 years
  - 2 years of pre-construction deliveries
  - 4 years of module transport
- Tugs and barges stage at Port Clarence awaiting ice-out at Utqiagvik, then move to Prudhoe Bay to offload w/ assist tugs
- Some barges offload at Prudhoe Bay, then move to Point Thomson
- Tugs and barges return to Dutch Harbor after offload

## Bowhead Whale Range & Migration Routes



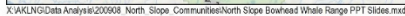
# Western Arctic Bowhead Whale Range

## Spring Migration Patterns





ALASKA GASLINE  
DEVELOPMENT CORP.





## Monitoring & Mitigation Plan

- NMFS issued a proposed IHA for public comment, and is in the process of developing a final IHA for publication (approximately 1Q 2021)
- All construction work associated with the IHA is expected to be done in one year, with a focus on open water and a contingency period during ice cover
- Activities for which an IHA is required:
  - West Dock Causeway Widening
  - Dock Head 4 Construction
  - Barge Bridge and Abutments
- Specific objectives:
  - Complete work safely and efficiently while avoiding and minimizing impacts to marine mammals
  - Collect data on sightings including location, species, numbers, behavior, environmental conditions
  - Provide a clear chain of command and communication

# Monitoring & Mitigation Plan

- Sound source verification will be performed to verify sound propagation estimates
- Passive acoustic monitors will be deployed
- Shutdown zones have been established based on acoustics modeling and density estimates
  - The modeling and estimates are conservative
- Project will employ experienced, trained Protected Species Observers during in-water activities
  - PSO's have the ability to stop activity
- Communication will be ongoing



- Avoid and minimize impacts on subsistence whaling and marine mammal hunting by coordination with individual Whaling Captains Association's
  - In conjunction with each Whaling Captains Association develop a Communications Plan
- Employ community representatives to alert the project on planned subsistence activities and places to avoid
- Establish for the Project a Local Subsistence Implementation Committee
  - Meet on a regular basis
  - Provide project updates and information
  - Identify community issues and concerns
  - Work to resolve issues, if any, in a mutually satisfactory manner

- Develop Conflict Avoidance Agreement with AEWC
- Prepare *Project Local Subsistence Implementation Plan*
  - Completed in coordination with AEWC and NMFS
- Project Transit Management Plan
- Vessel Strike Avoidance Measures

## Whaling Captains Communications Plan



- Identify the most effective way to engage and communicate activities during annual sealifts and construction
  - Annual meetings in January of each year throughout relevant Project construction
  - Email and phone numbers for community & organizational contacts
    - Notification prior to departure of each barge heading north from Dutch Harbor
    - Notification prior to departure of each barge heading south from West Dock
  - Dedicated page on Alaska LNG Project Web Site
  - Project hotline
  - Dedicated radio channel to communicate activities and locations during whaling season
- Post season community meetings after the end of whaling season
  - What worked
  - What needs improvement
- Other suggestions

We welcome your questions and input.

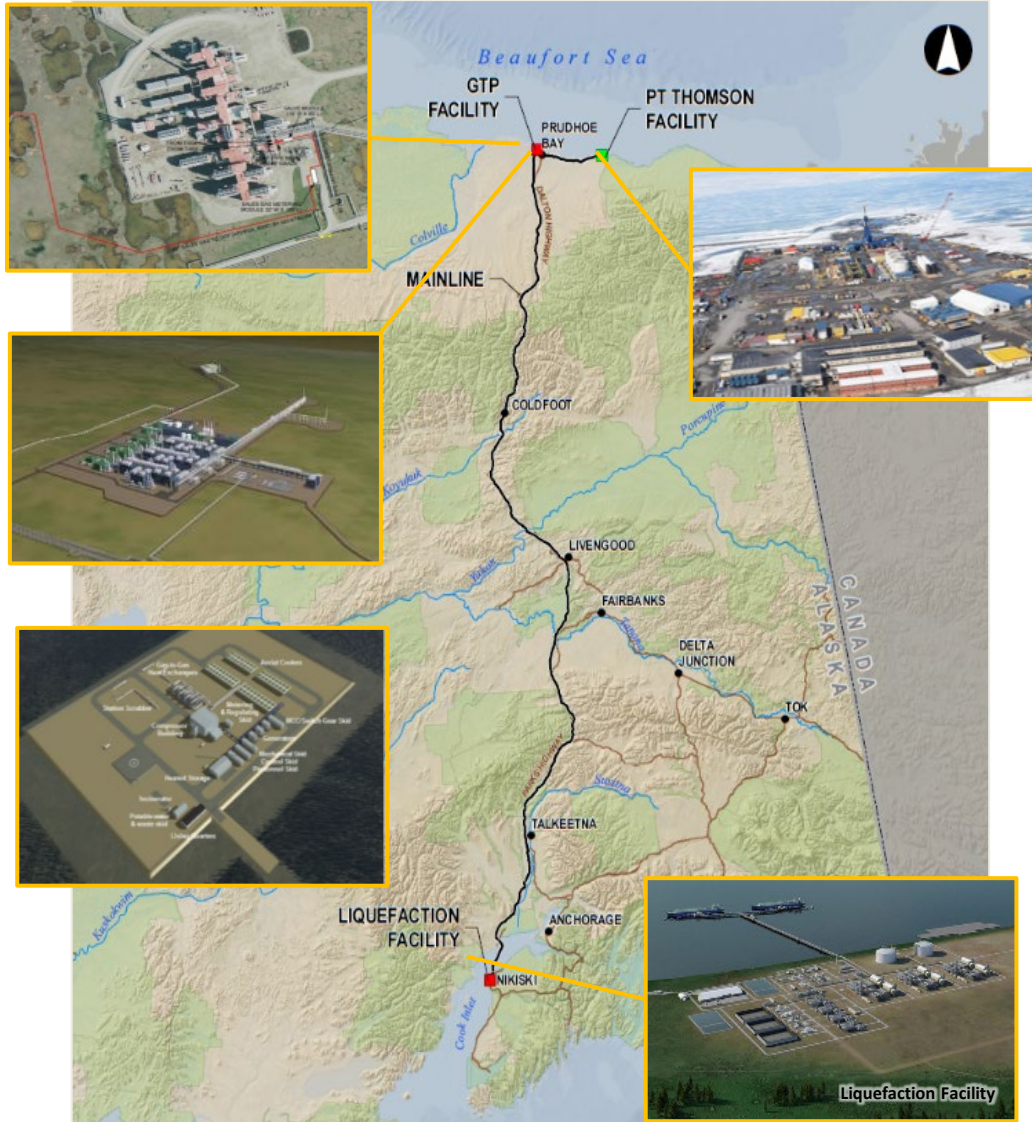
Thank You



[AGDC.us](http://AGDC.us)



# Alaska LNG – Project Overview



## Producing Fields

- Anchored by Prudhoe Bay and Point Thomson for 20 years

## Gas Treatment Plant

- Located at North Slope
- Remove CO<sub>2</sub> / H<sub>2</sub>S; Compress for re-injection
- Footprint: 150-250 acres

## Pipeline

- Large diameter: 42" operating at >2,000 psi
- Capacity: 3.3 billion cubic feet per day
- Length: ~800 miles (similar to TAPS)
- Point Thomson Transmission Line (PTTL): 63 miles, 32" pipeline above ground on VSM
- Mainline: ~776 miles 42" pipeline, mostly buried, offshore Cook Inlet Crossing about 28 miles, buried at shore crossings
- 8 compression stations and 1 heater station for temperature control

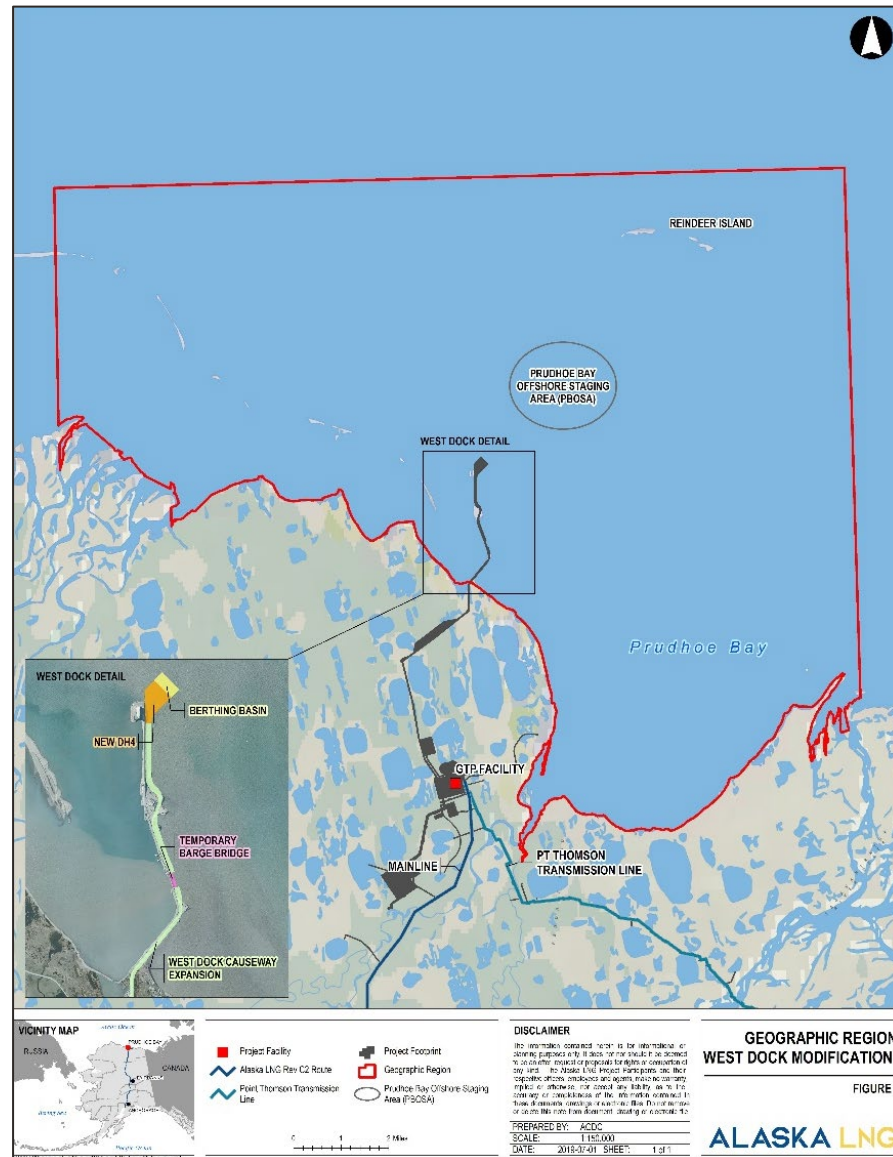
## Liquefaction Plant

- Capacity: up to 20 MTA
- 3 trains (6.67 MTA/train)
- Footprint: 640-1,000 acres

## Storage / Loading

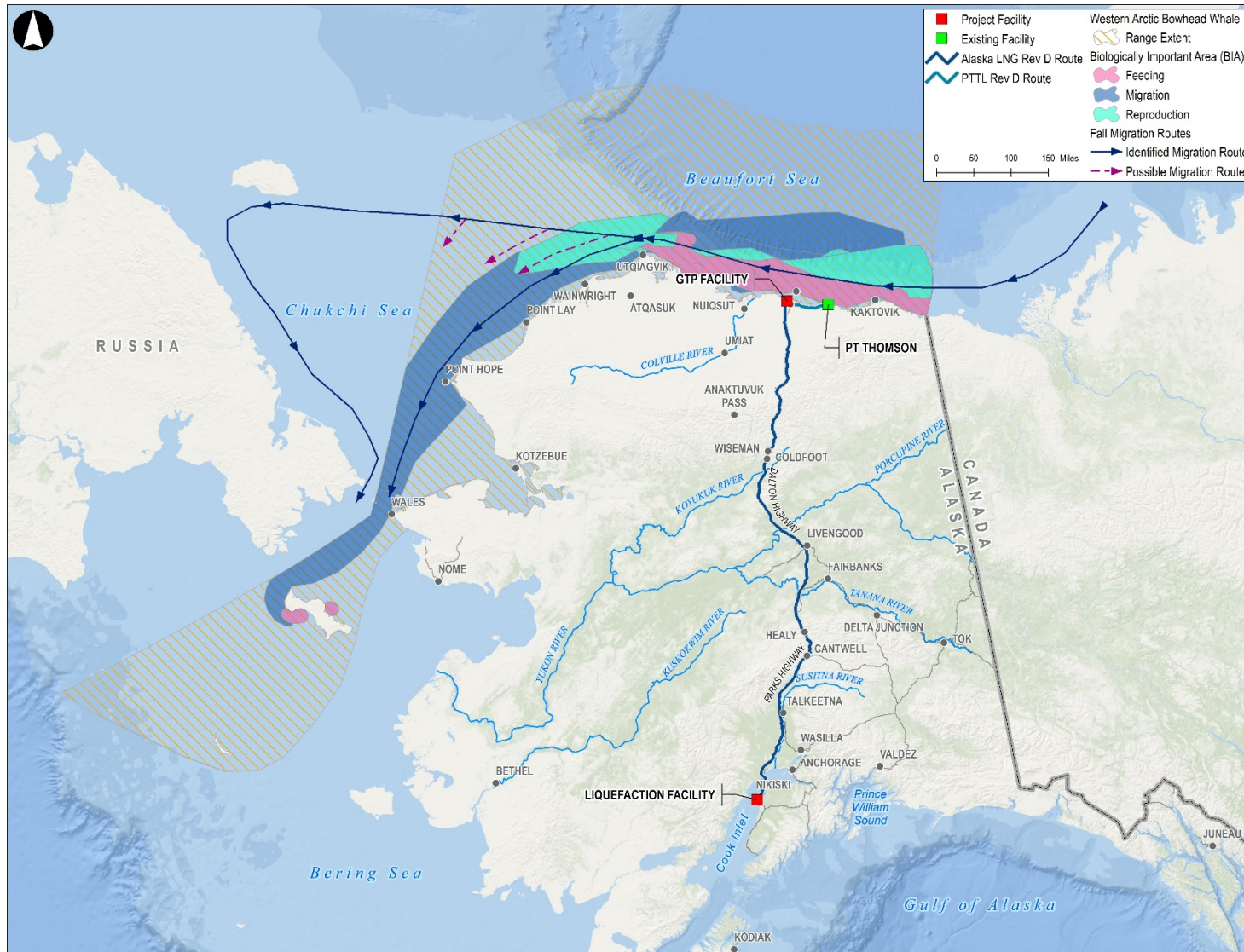
- Terminal: 2 x 240,000 m<sup>3</sup> LNG Storage Tanks
- 1 loading jetty with 2 berths; 15-20 tankers per month

# Geographic Region - West Dock





# Western Arctic Bowhead Whale Range Fall Migration Patterns and BIA





- **Module Offload – Docking and Transport from Causeway**
  - Activity Period: Approximately 4 – 6 years
  - Season: Summer (July – September)
  - Location: Adjacent to 650-foot breach
- **Mitigation**
  - Barges placed prior to sealift but after migrating cisco passage
  - Barge bridge contains openings/gaps for passage of local fish

- Prior to construction, AGDC shall file with FERC, for the review and written approval, the *Project Local Subsistence Implementation Plan* prepared in coordination with NMFS and AEWC (FERC Order, page 69 #199)
- Prior to construction, AGDC shall file with FERC, a signed Conflict Avoidance Agreement prepared in coordination with NMFS and the AEWC (FERC Order, page 69 # 199)