

# Alaska LNG Project

---

January 29, 2020



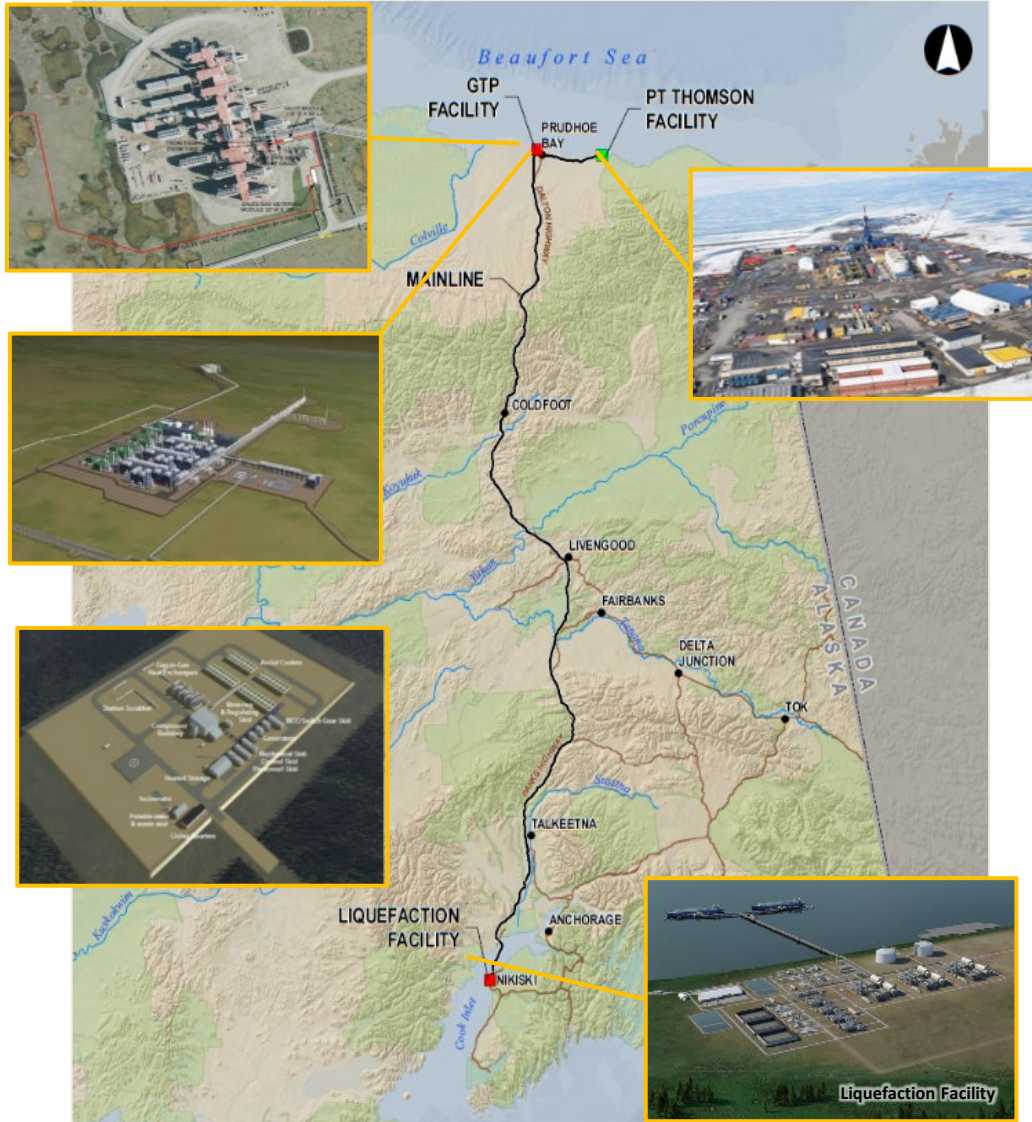
- Why are we here?
- Alaska Gasline Development Corporation (AGDC)
- Alaska LNG Project
  - Overview
  - North Slope Activities
    - West Dock
    - Barge Vessel Activity
- Regulatory Overview
  - NMFS IHA
- Marine Mammal Monitoring & Mitigation Plan
- Barrow Whaling Captains Communications Plan
- Future meetings

# What is AGDC?

## Alaska Gasline Development Corporation (AGDC):

- Independent, public corporation owned by the State of Alaska
- Created by the Alaska State Legislature
- Completed major permitting of the ASAP Project
- Currently lead party for developing the Alaska LNG Project
  - Maximize the benefit of Alaska's vast North Slope natural gas resources through the development of infrastructure necessary to move the gas to local and international markets

# Alaska LNG – Project Overview



## Producing Fields

- Anchored by Prudhoe Bay and Point Thomson for 20 years

## Gas Treatment Plant

- Located at North Slope
- Remove CO<sub>2</sub> / H<sub>2</sub>S; Compress for re-injection
- Footprint: 150-250 acres

## Pipeline

- Large diameter: 42" operating at >2,000 psi
- Capacity: 3.3 billion cubic feet per day
- Length: ~800 miles (similar to TAPS)
- Point Thomson Transmission Line (PTTL): 63 miles, 32" pipeline above ground on VSM
- Mainline: ~776 miles 42" pipeline, mostly buried, offshore Cook Inlet Crossing about 28 miles, buried at shore crossings
- 8 compression stations and 1 heater station for temperature control

## Liquefaction Plant

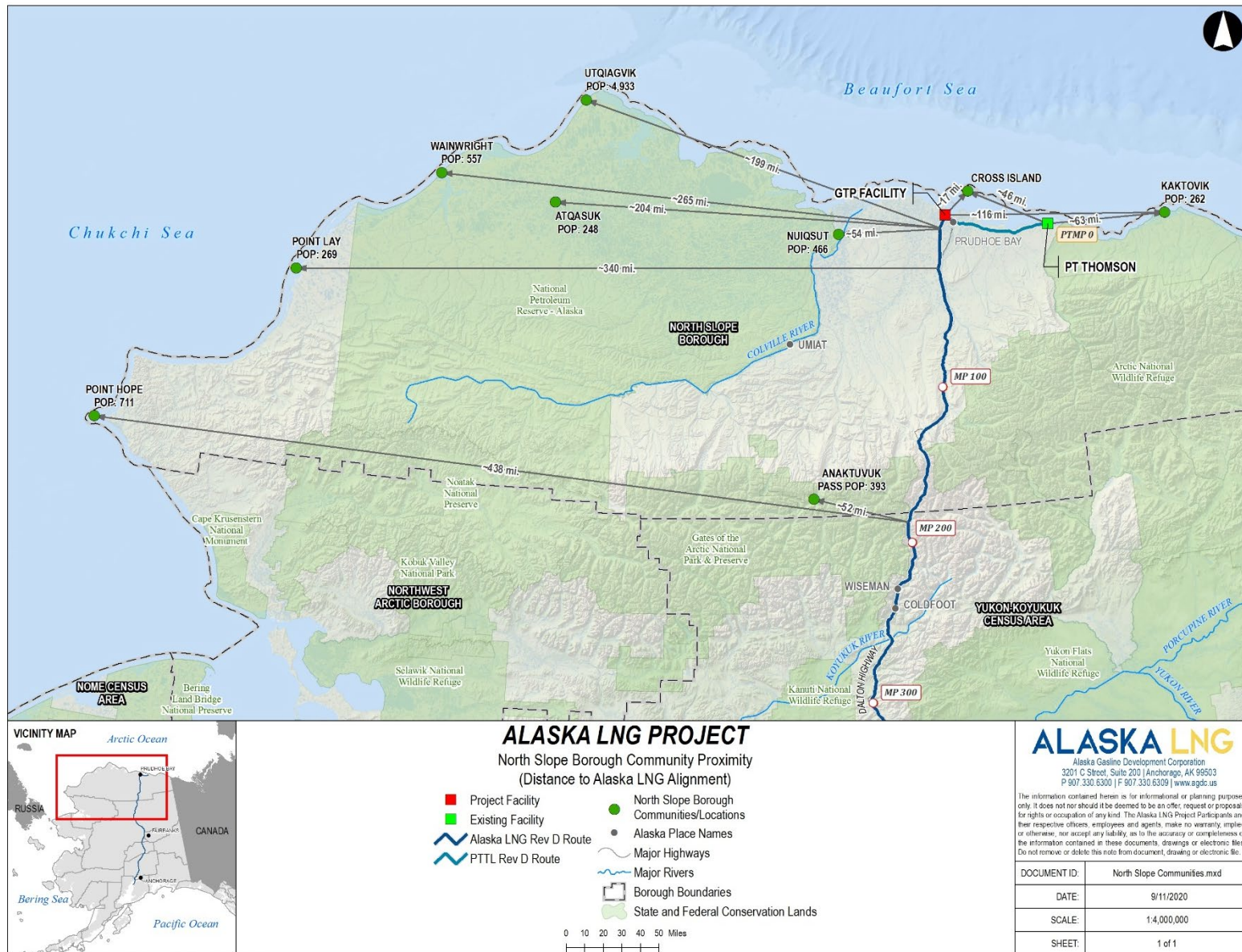
- Capacity: up to 20 MTA
- 3 trains (6.67 MTA/train)
- Footprint: 640-1,000 acres

## Storage / Loading

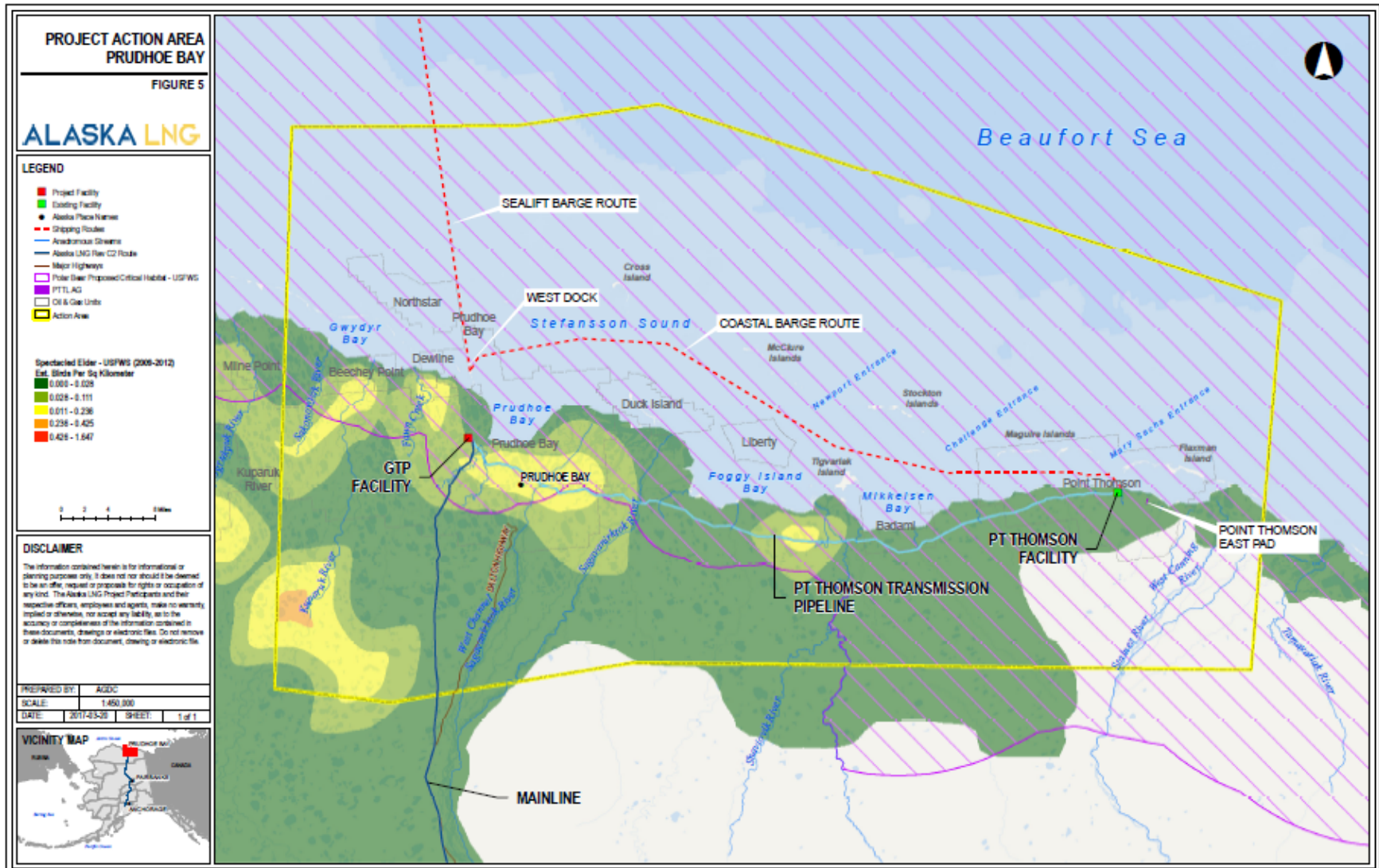
- Terminal: 2 x 240,000 m<sup>3</sup> LNG Storage Tanks
- 1 loading jetty with 2 berths; 15-20 tankers per month



# Map



# Project Action Area – Prudhoe Bay



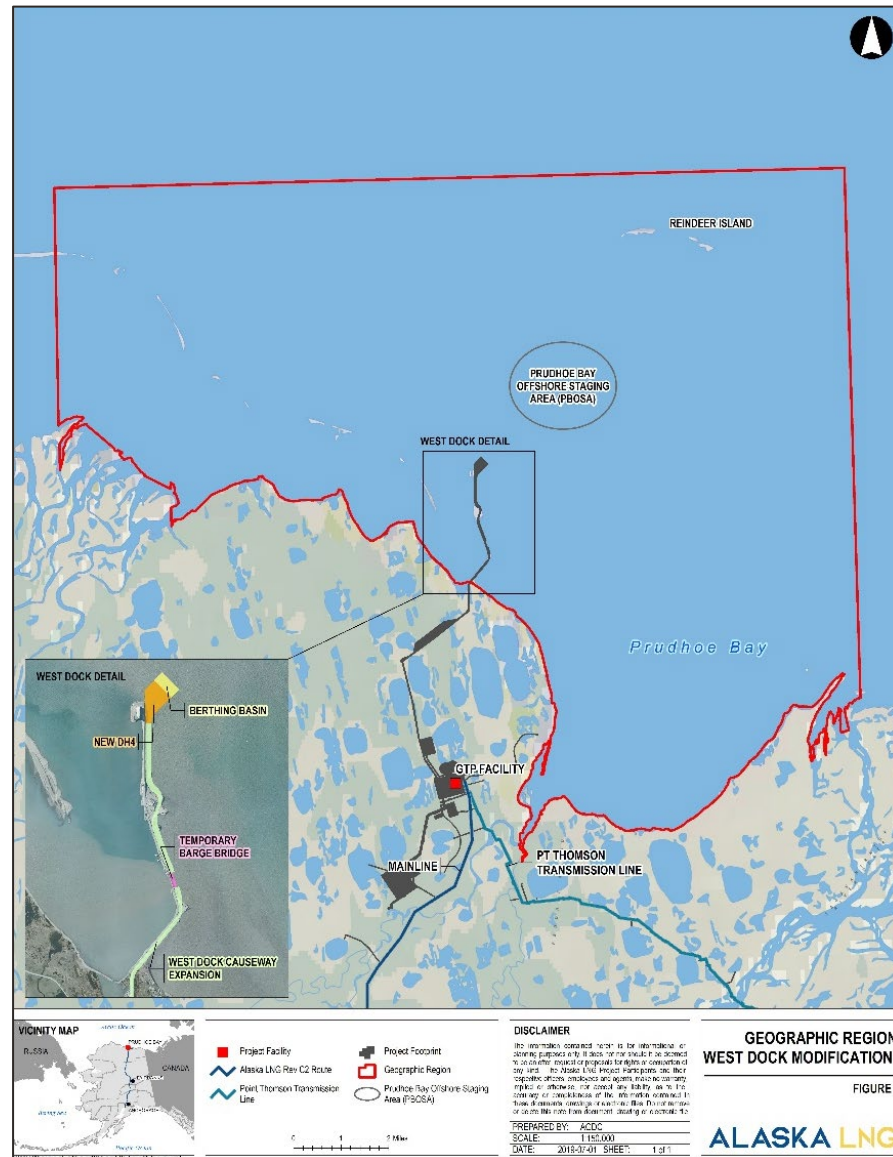


# Alaska LNG - North Slope

- GTP is composed of large modules weighing up to 9,400 s/tons to treat Prudhoe Bay gas
- 32" gas pipeline from Point Thomson west to the GTP (PTTL)
- 42" Mainline from GTP south to Brooks Range, Atigun Pass, and south to Cook Inlet
- West Dock causeway requires modification to receive modules
- Requires 12 feet of water depth and use of furthest north portion of West Dock causeway
- Requires bypass of weight-limited causeway bridge, use of ballasted barges as temporary bridge



# Geographic Region - West Dock





# Barge Vessel Activity

- **Average of ~10 barges per year for 6 years**
  - 2 years of pre-construction deliveries
  - 4 years of module transport
- **Tugs and barges stage at Port Clarence awaiting ice-out at Utqiagvik, then move to Prudhoe Bay to offload w/ assist tugs**
- **Some barges offload at Prudhoe Bay, then move to Point Thomson**
- **Tugs and barges return to Dutch Harbor after offload**

- **Module Offload – Docking and Transport from Causeway**
  - Activity Period: Approximately 4 – 6 years
  - Season: Summer (July – September)
  - Location: Adjacent to 650-foot breach
- **Mitigation**
  - Barges placed prior to sealift but after migrating cisco passage
  - Barge bridge contains openings/gaps for passage of local fish

# Regulatory Program Overview

- FERC Natural Gas Act Section 3 application and major federal permit applications submitted in April 2017
- Primary objective is to de-risk the Project and improve economic viability
- FERC issued the FEIS on schedule – March 6, 2020
- FERC Order issued May 21, 2020 allows for construction of Project
- Prudhoe Bay IHA application pending NMFS approval
  - Plan of Cooperation
  - Communications Plan
- DOE Export License issued
- Major federal and State of Alaska permits either in hand or pending issuance



- Prior to construction, AGDC shall file with FERC, for the review and written approval, the *Project Local Subsistence Implementation Plan* prepared in coordination with NMFS and AEWC (FERC Order, page 69 #199)
- Prior to construction, AGDC shall file with FERC, a signed Conflict Avoidance Agreement prepared in coordination with NMFS and the AEWC (FERC Order, page 69 # 199)

# Monitoring & Mitigation Plan

- NMFA issued an IHA in December 2020
- Activities for which an IHA is required:
  - Causeway Widening
  - Dock Head 4 Construction
  - Barge Bridge and Abutments
  - Sealift
- Specific objectives:
  - Complete work safely and efficiently while avoiding and minimizing impacts to marine mammals
  - Data collection of sightings including location, species, numbers, behavior, environmental conditions
  - Clear chain of command and communication
  - Preventative Shutdown Zone for all marine mammals
- Project to employ experienced, trained Protected Species Observers during in-water activities
  - PSO's have the ability to stop activity

- Lisa to add highlights



- Establish a Local Subsistence Implementation Committee
  - Meet on a regular basis
    - Provide project updates and information
    - Identify community issues and concerns
    - Work to resolve issues, if any, in a mutually satisfactory manner
- Avoid and minimize impacts on subsistence whaling and marine mammal hunting by coordination with individual whaling associations
  - In conjunction with the Barrow Whaling Commission develop a Communications Plan
- Employ community representatives to alert the project on planned subsistence activities and places to avoid

- **Develop** Conflict Avoidance Agreement with AEWC
- Prepare *Project Local Subsistence Implementation Plan*
  - Completed in coordination with AEWC and NMFS
- Project Transit Management Plan
- Vessel Strick Avoidance Measures

- Identify the most effective way to engage and communicate activities during annual sealifts and construction
  - Annual meetings throughout Project construction in January of each year
  - Email and phone numbers for community & organizational contacts
  - Dedicated Web Site
  - Project hotline
  - Dedicated radio channel to communicate activities and locations during whaling season
- Post season community meetings after the end of whaling season
  - What worked
  - What needs improvement
- Other suggestions



# Future Meetings

- How often do you want to meet and receive project updates?
- When is the best time of year to meet?

Thank You

---



AGDC.us



# Vessel Activity

