

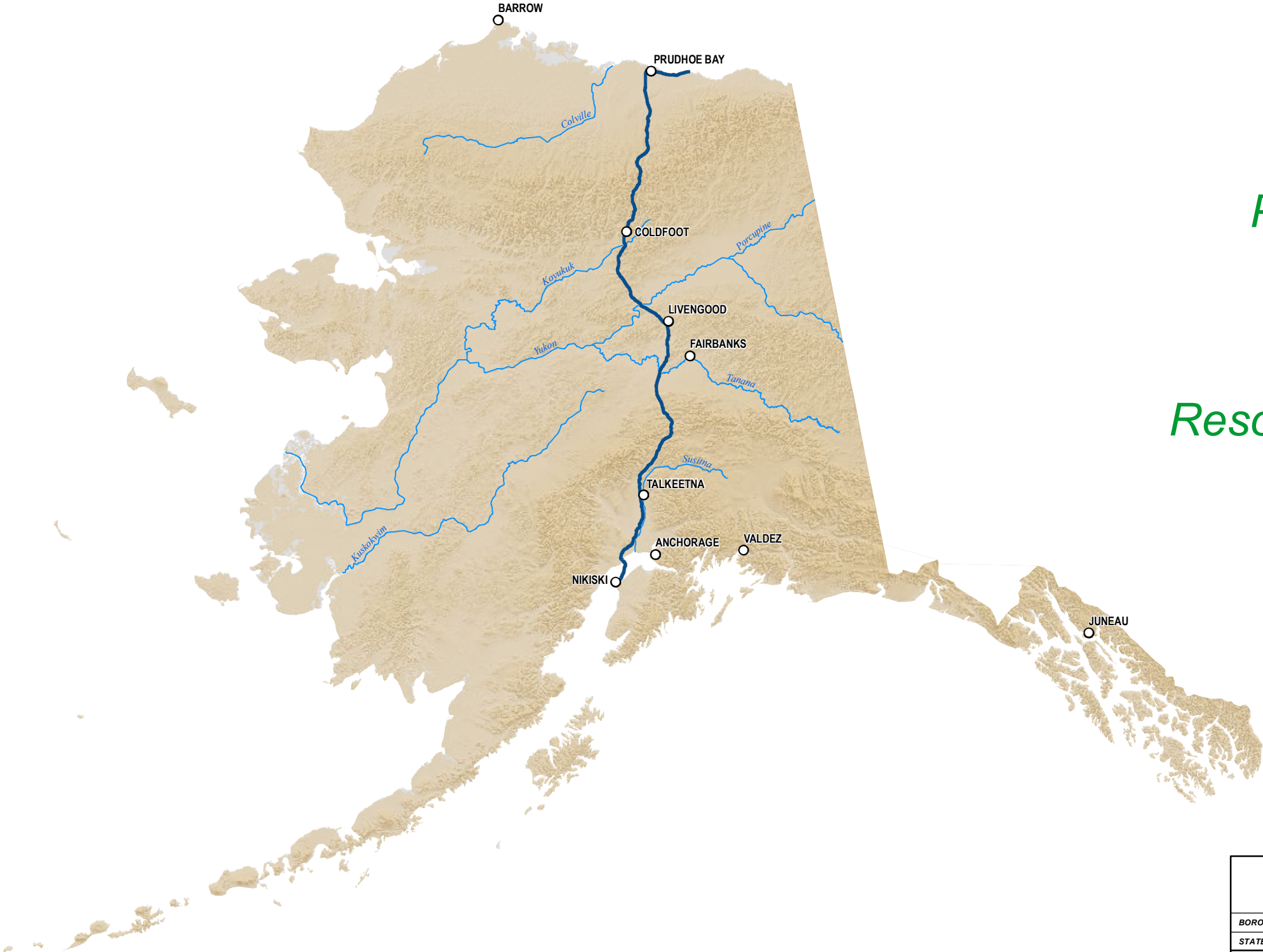
ALASKA LNG PROJECT	DOCKET No. CP17-____-000 RESOURCE REPORT No. 3 APPENDIX B PART 10 OF 10	Doc No: USAKE-PT-SRREG-00- 000006-000 APRIL 14, 2017 REVISION: 0
	PUBLIC	

Part 10 of 10 of Appendix B of Resource Report No. 3

Alaska LNG Project

Vegetation Resources Point Thomson Rev C Route Off ROW Facilities & Access Roads

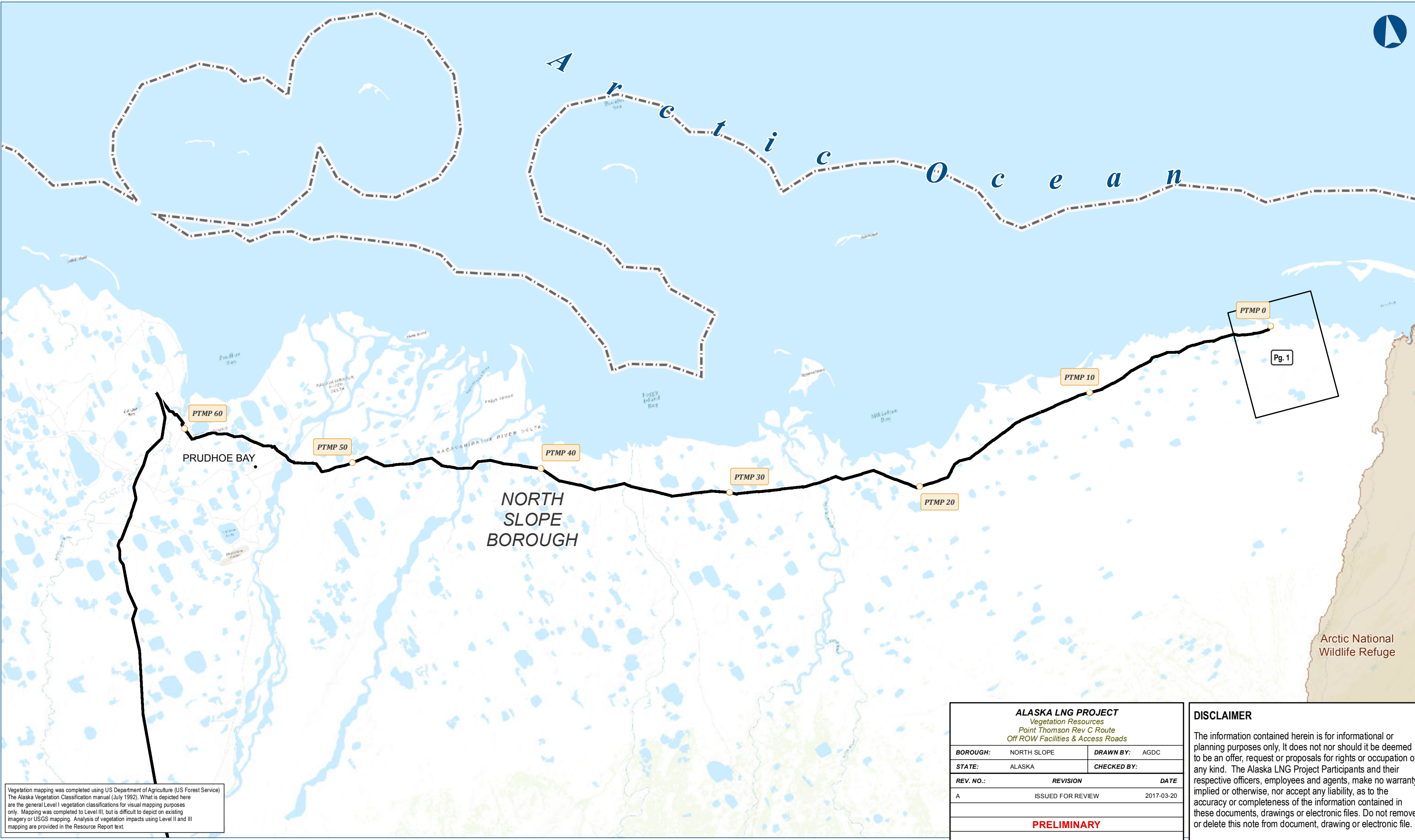
Resource Report 3, Appendix B3 Topographical Mapping



Vegetation mapping was completed using US Department of Agriculture (US Forest Service) The Alaska Vegetation Classification manual (July 1992). What is depicted here are the general Level I vegetation classifications for visual mapping purposes only. Mapping was completed to Level III, but is difficult to depict on existing imagery or USGS mapping. Analysis of vegetation impacts using Level II and III mapping are provided in the Resource Report text.

ALASKA LNG PROJECT		
Vegetation Resources		
Point Thomson Rev C Route		
Off ROW Facilities & Access Roads		
BOROUGH:	-	DRAWN BY: AGDC
STATE:	ALASKA	CHECKED BY:
REV. NO.:	REVISION	DATE
A	ISSUED FOR REVIEW	2017-03-21
PRELIMINARY		
1:10,000,000	0 100 200 Miles	
DATE: 2017-03-21	PROJECTION: NAD 1983 NSRS2007 STATEPLANE ALASKA 4 FIPS 5004	DWG: RR3_APPENDIX_B3_OFF_PTTL_TOPO_REV_C_CL_COVER

DISCLAIMER
The information contained herein is for informational or planning purposes only. It does not nor should it be deemed to be an offer, request or proposals for rights or occupation of any kind. The Alaska LNG Project Participants and their respective officers, employees and agents, make no warranty, implied or otherwise, nor accept any liability, as to the accuracy or completeness of the information contained in these documents, drawings or electronic files. Do not remove or delete this note from document, drawing or electronic file.
SHEET: COVER PAGE

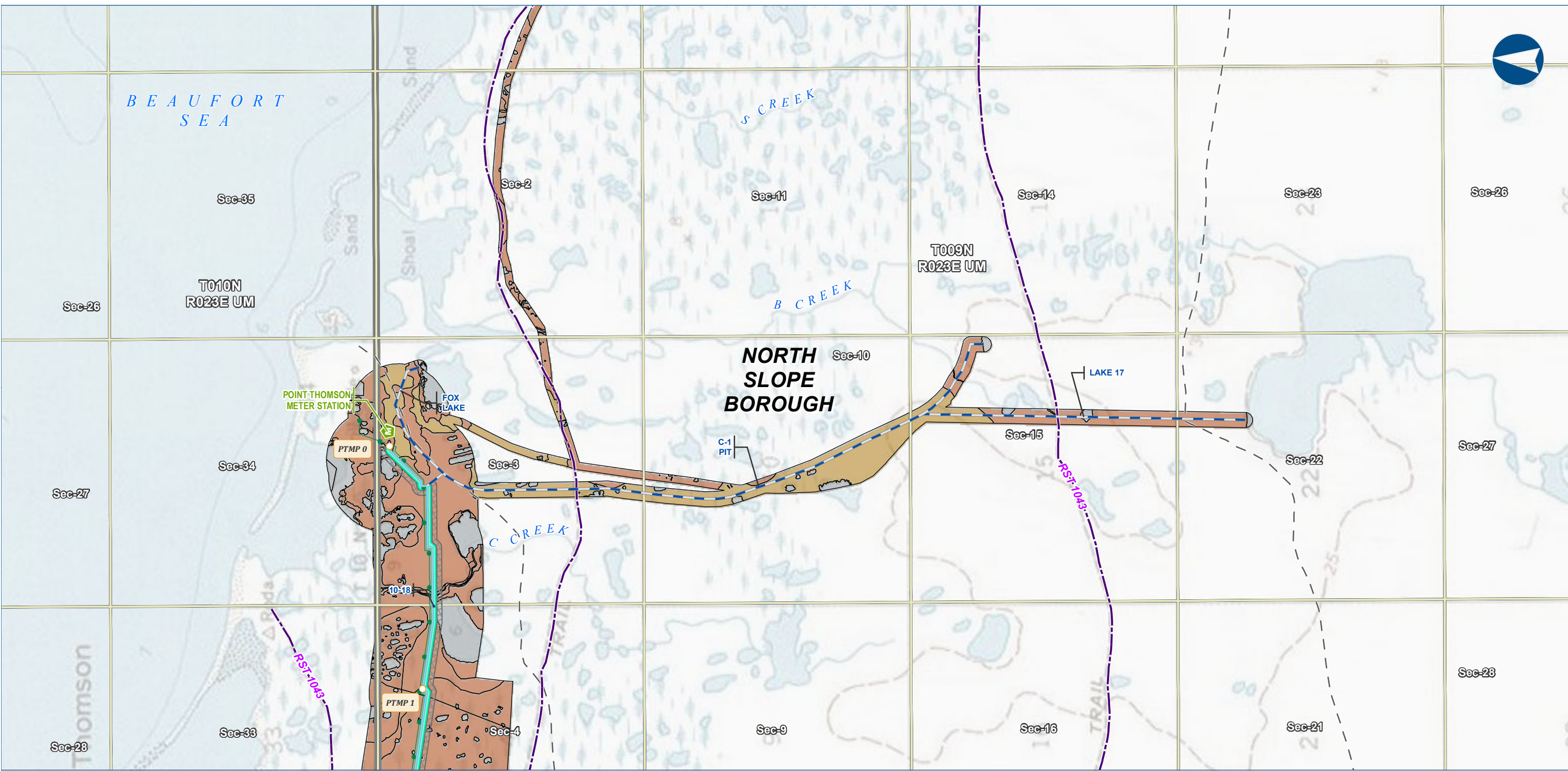


Vegetation mapping was completed using US Department of Agriculture (US Forest Service) The Alaska Vegetation Classification manual (July 1992). What is depicted here are the general Level I vegetation classifications for visual mapping purposes only. Mapping was completed to Level III, but is difficult to depict on existing imagery or USGS mapping. Analysis of vegetation impacts using Level II and III mapping are provided in the Resource Report text.

ALASKA LNG PROJECT		
Vegetation Resources		
Point Thomson Rev C Route		
Off ROW Facilities & Access Roads		
BOROUGH:	NORTH SLOPE	DRAWN BY: AGDC
STATE:	ALASKA	CHECKED BY:
REV. NO.:	REVISION	DATE
A	ISSUED FOR REVIEW	2017-03-20
PRELIMINARY		
1:281,485	0 3 6 Miles	
DATE: 2017-03-20	PROJECTION: NAD83 NSRS2007 STATEPLANE ALASKA 4 FIPS 5004	DWG: RR3_APPENDIX_B_3_4_OFF_P TTL_INDEX_REV_B_CL

DISCLAIMER

The information contained herein is for informational or planning purposes only. It does not nor should it be deemed to be an offer, request or proposals for rights or occupation of any kind. The Alaska LNG Project Participants and their respective officers, employees and agents, make no warranty, implied or otherwise, nor accept any liability, as to the accuracy or completeness of the information contained in these documents, drawings or electronic files. Do not remove or delete this note from document, drawing or electronic file.



Alaska LNG Project

Legend

PIPELINE

- Point Thomson Transmission Line
- Ice Pad Access Road
- Meter Station
- Permanent ROW
- Construction ROW

EXISTING FEATURES

- Existing Roads
- Revised Statute 2477 Trail
- Off Road Trails
- Existing Pipeline
- Section
- Township

Vegetation

Viereck Level 1

- I - Forest
- II - Scrub
- III - Herbaceous
- No Vegetation
- Not Classified

Vegetation mapping was completed using US Department of Agriculture (US Forest Service) The Alaska Vegetation Classification manual (July 1992). What is depicted here are the general Level I vegetation classifications for visual mapping purposes only. Mapping was completed to Level III, but is difficult to depict on existing imagery or USGS mapping. Analysis of vegetation impacts using Level II and III mapping are provided in the Resource Report text.

ALASKA LNG PROJECT Vegetation Resources Point Thomson Rev C Route Off ROW Facilities & Access Roads		
BOROUGH:	NORTH SLOPE	DRAWN BY: AGDC
STATE:	ALASKA	CHECKED BY:
REV. NO.:	REVISION	DATE
A	ISSUED FOR REVIEW	2017-03-28
PRELIMINARY		
1:24,000 0 1/4 1/2 Miles		
DATE: 2017-03-28	PROJECTION: NAD83 NSRS2007 ALASKAZONE4 FTUS 54392	

DISCLAIMER

The information contained herein is for informational or planning purposes only. It does not nor should it be deemed to be an offer, request or proposals for rights or occupation of any kind. The Alaska LNG Project Participants and their respective officers, employees and agents, make no warranty, implied or otherwise, nor accept any liability, as to the accuracy or completeness of the information contained in these documents, drawings or electronic files. Do not remove or delete this note from document, drawing or electronic file.

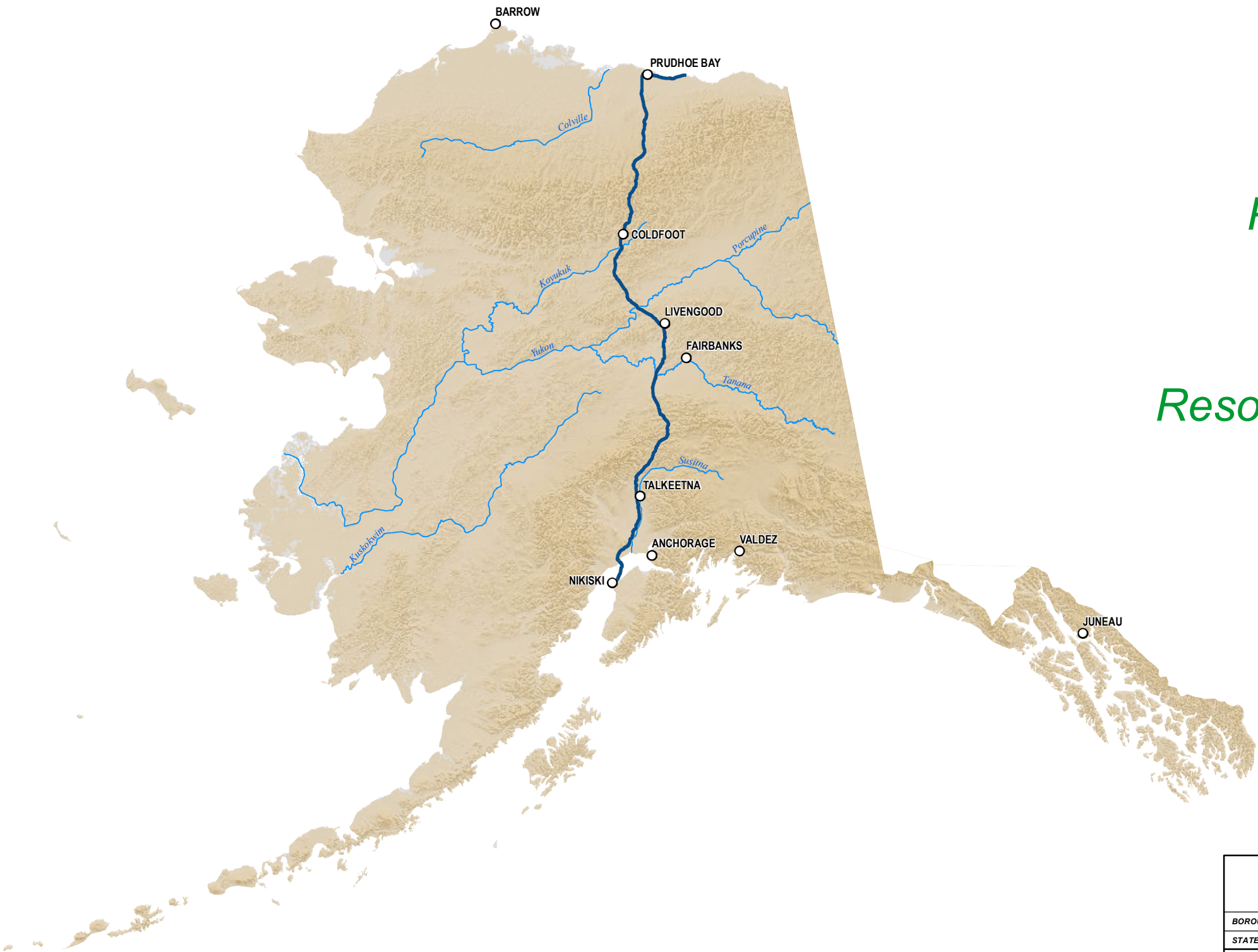
DWG: RR3_APPENDIX_B3_PT_OFF_ROW_TOPO_REV_C_CL

SHEET: 1

Alaska LNG Project

Vegetation Resources Point Thomson Rev C Route Off ROW Facilities & Access Roads

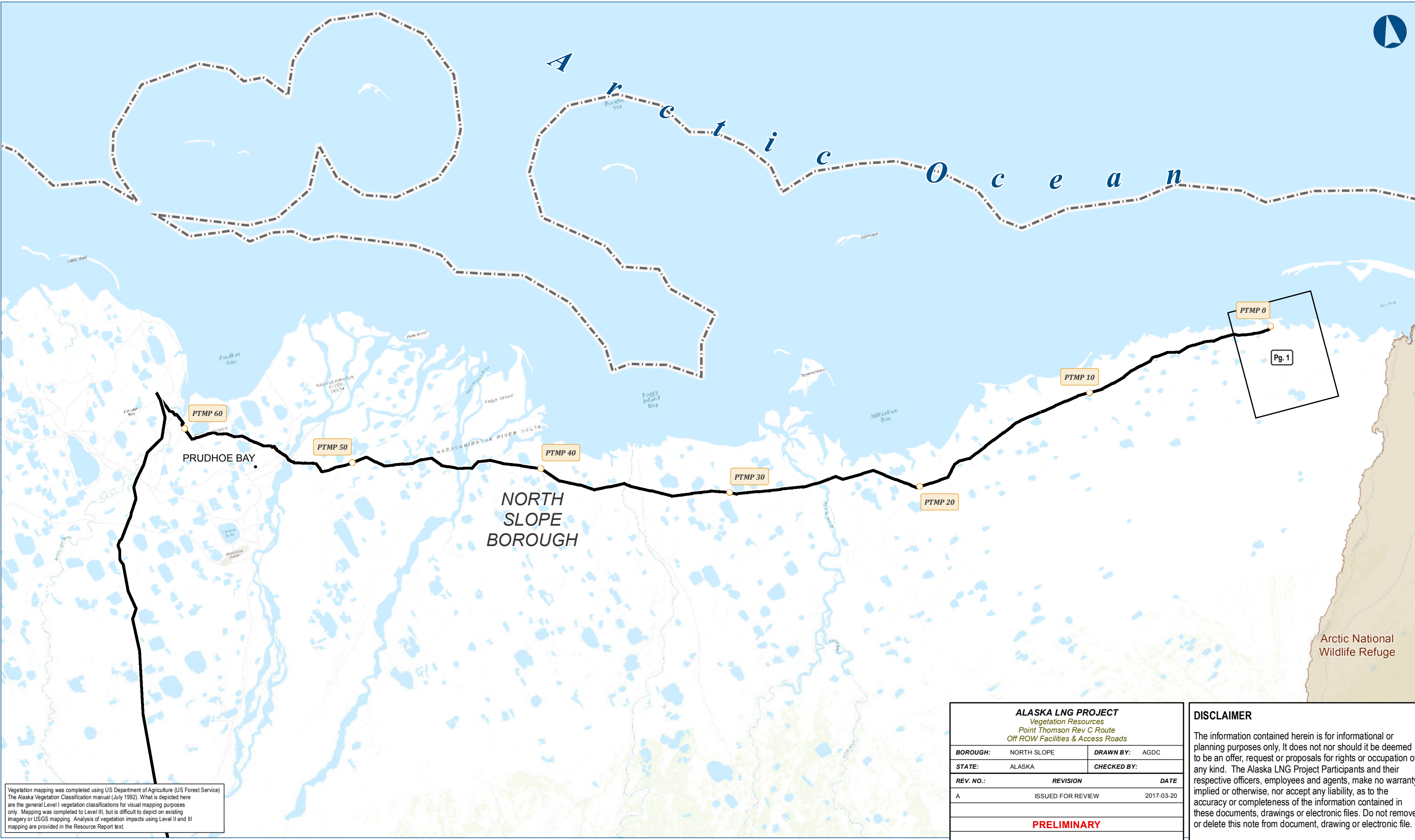
Resource Report 3, Appendix B4 Aerial Mapping



Vegetation mapping was completed using US Department of Agriculture (US Forest Service) The Alaska Vegetation Classification manual (July 1992). What is depicted here are the general Level I vegetation classifications for visual mapping purposes only. Mapping was completed to Level III, but is difficult to depict on existing imagery or USGS mapping. Analysis of vegetation impacts using Level II and III mapping are provided in the Resource Report text.

ALASKA LNG PROJECT		
Vegetation Resources		
Point Thomson Rev C Route		
Off ROW Facilities & Access Roads		
BOROUGH:	-	DRAWN BY: AGDC
STATE:	ALASKA	CHECKED BY:
REV. NO.:	REVISION	DATE
A	ISSUED FOR REVIEW	2017-03-21
PRELIMINARY		
1:10,000,000	0 100 200 Miles	
DATE: 2017-03-21	PROJECTION: NAD 1983 NSRS2007 STATEPLANE ALASKA 4 FIPS 5004	

DISCLAIMER
The information contained herein is for informational or planning purposes only. It does not nor should it be deemed to be an offer, request or proposals for rights or occupation of any kind. The Alaska LNG Project Participants and their respective officers, employees and agents, make no warranty, implied or otherwise, nor accept any liability, as to the accuracy or completeness of the information contained in these documents, drawings or electronic files. Do not remove or delete this note from document, drawing or electronic file.
DWG: RR3_APPENDIX_B4_OFF_PTTL_AERIAL_REV_C_CL_COVER
SHEET: COVER PAGE

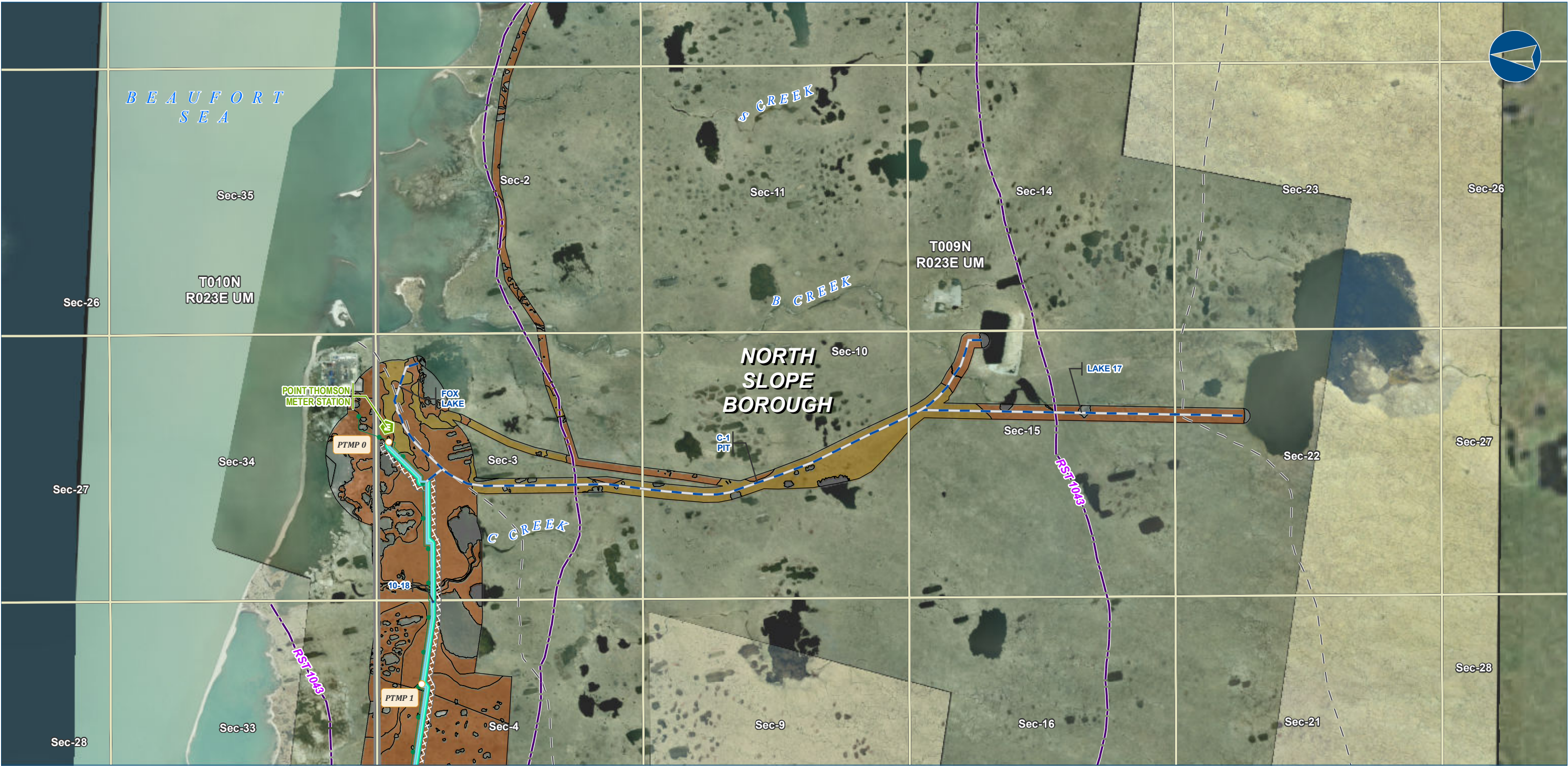


Vegetation mapping was completed using US Department of Agriculture (US Forest Service) The Alaska Vegetation Classification manual (July 1992). What is depicted here are the general Level I vegetation classifications for visual mapping purposes only. Mapping was completed to Level III, but is difficult to depict on existing imagery or USGS mapping. Analysis of vegetation impacts using Level II and III mapping are provided in the Resource Report text.

ALASKA LNG PROJECT		
Vegetation Resources		
Point Thomson Rev C Route		
Off ROW Facilities & Access Roads		
BOROUGH:	NORTH SLOPE	DRAWN BY: AGDC
STATE:	ALASKA	CHECKED BY:
REV. NO.:	REVISION	DATE
A	ISSUED FOR REVIEW	2017-03-20
PRELIMINARY		
1:281,485	0 3 6 Miles	
DATE: 2017-03-20	PROJECTION: NAD83 NSRS2007 STATEPLANE ALASKA 4 FIPS 5004	DWG: RR3_APPENDIX_B_3_4_OFF_P TTL_INDEX_REV_B_CL

DISCLAIMER

The information contained herein is for informational or planning purposes only. It does not nor should it be deemed to be an offer, request or proposals for rights or occupation of any kind. The Alaska LNG Project Participants and their respective officers, employees and agents, make no warranty, implied or otherwise, nor accept any liability, as to the accuracy or completeness of the information contained in these documents, drawings or electronic files. Do not remove or delete this note from document, drawing or electronic file.



Alaska LNG Project

Legend

PIPELINE

- Point Thomson Transmission Line
- Ice Pad Access Road
- Meter Station
- Permanent ROW
- Construction ROW

EXISTING FEATURES

- Existing Roads
- Revised Statute 2477 Trail
- Off Road Trails
- Existing Pipeline
- Section
- Township

VEGETATION

Viereck Level 1

- I - Forest
- II - Scrub
- III - Herbaceous
- No Vegetation
- Not Classified

Vegetation mapping was completed using US Department of Agriculture (US Forest Service) The Alaska Vegetation Classification manual (July 1992). What is depicted here are the general Level I vegetation classifications for visual mapping purposes only. Mapping was completed to Level III, but is difficult to depict on existing imagery or USGS mapping. Analysis of vegetation impacts using Level II and III mapping are provided in the Resource Report text.

ALASKA LNG PROJECT Vegetation Resources Point Thomson Rev C Route Off ROW Facilities & Access Roads		
BOROUGH:	NORTH SLOPE	DRAWN BY: AGDC
STATE:	ALASKA	CHECKED BY:
REV. NO.:	REVISION	DATE
A	ISSUED FOR REVIEW	2017-03-29
PRELIMINARY		
1:24,000 0 1/4 1/2 Miles		
DATE: 2017-03-29	PROJECTION:	NAD83 NSRS2007 ALASKAZONE4 FTUS 54392

DISCLAIMER

The information contained herein is for informational or planning purposes only. It does not nor should it be deemed to be an offer, request or proposals for rights or occupation of any kind. The Alaska LNG Project Participants and their respective officers, employees and agents, make no warranty, implied or otherwise, nor accept any liability, as to the accuracy or completeness of the information contained in these documents, drawings or electronic files. Do not remove or delete this note from document, drawing or electronic file.

DWG: RR3_APPENDIX_B4_PT_OFF_ROW_AERIAL_REV_C_CL

SHEET: 1