

ALASKA LNG PROJECT	DOCKET No. CP17-____-000 RESOURCE REPORT No.3 APPENDIX A PART 10 OF 10	Doc No: USAKE-PT-SRREG-00- 000006-000 APRIL 14, 2017 REVISION: 0
	PUBLIC	

**Part 10 of 10 of Appendix A of Resource Report No. 3**

# Alaska LNG Project

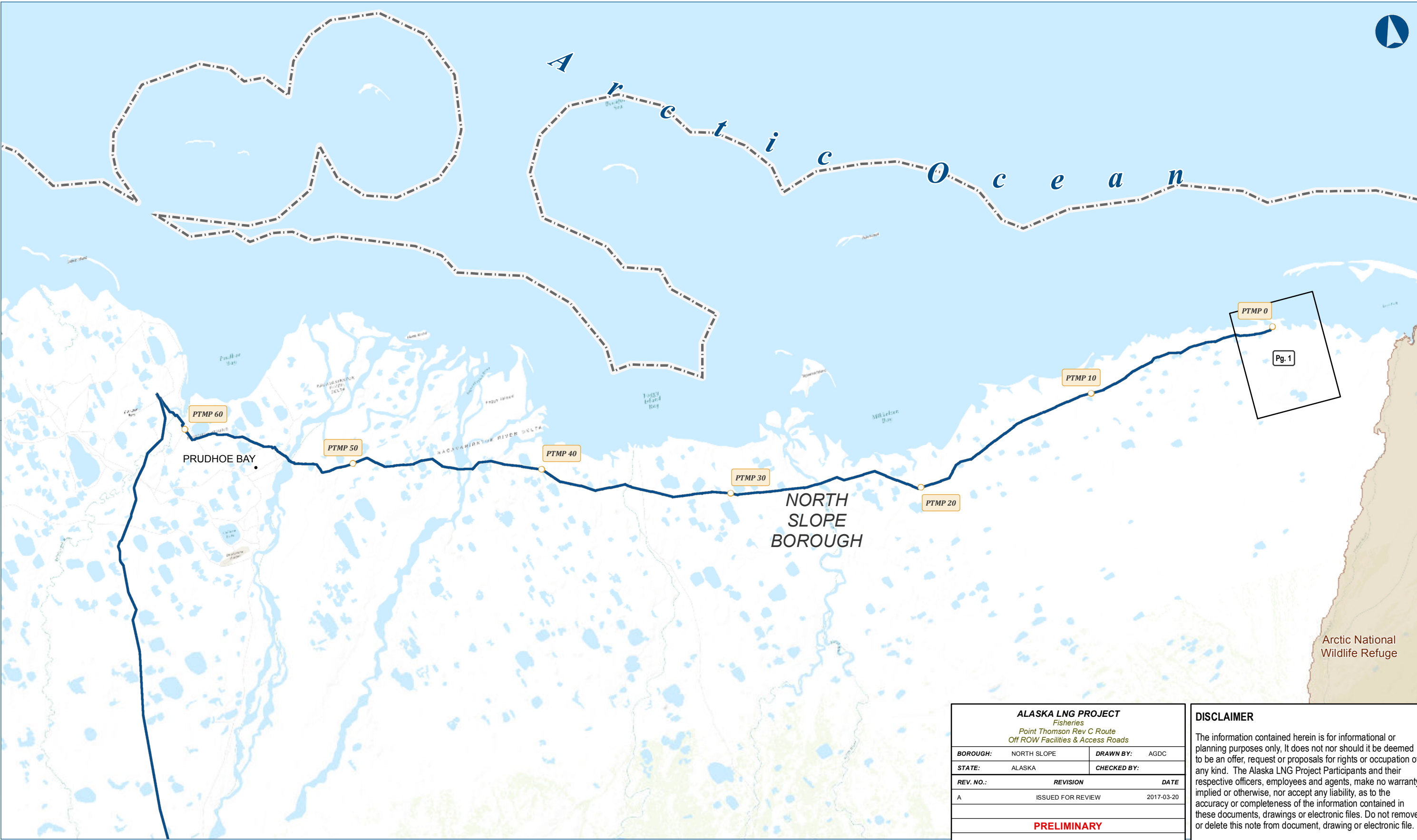
*Fisheries  
Point Thomson Rev C Route  
Off ROW Facilities &  
Access Roads*

*Resource Report 3, Appendix A3  
Topographical Mapping*



ALASKA LNG PROJECT		
Fisheries		
Point Thomson Rev C Route		
Off ROW Facilities & Access Roads		
BOROUGH:	-	DRAWN BY: AGDC
STATE:	ALASKA	CHECKED BY:
REV. NO.:	REVISION	DATE
A	ISSUED FOR REVIEW	2017-03-21
PRELIMINARY		
1:10,000,000	0 100 200 Miles	
DATE: 2017-03-21	PROJECTION: NAD 1983 NSRS2007 STATEPLANE ALASKA 4 FIPS 5004	DWG: RRS_APPENDIX_A3_OFF_PFTL_TOPO_REV_C_GL_COVER

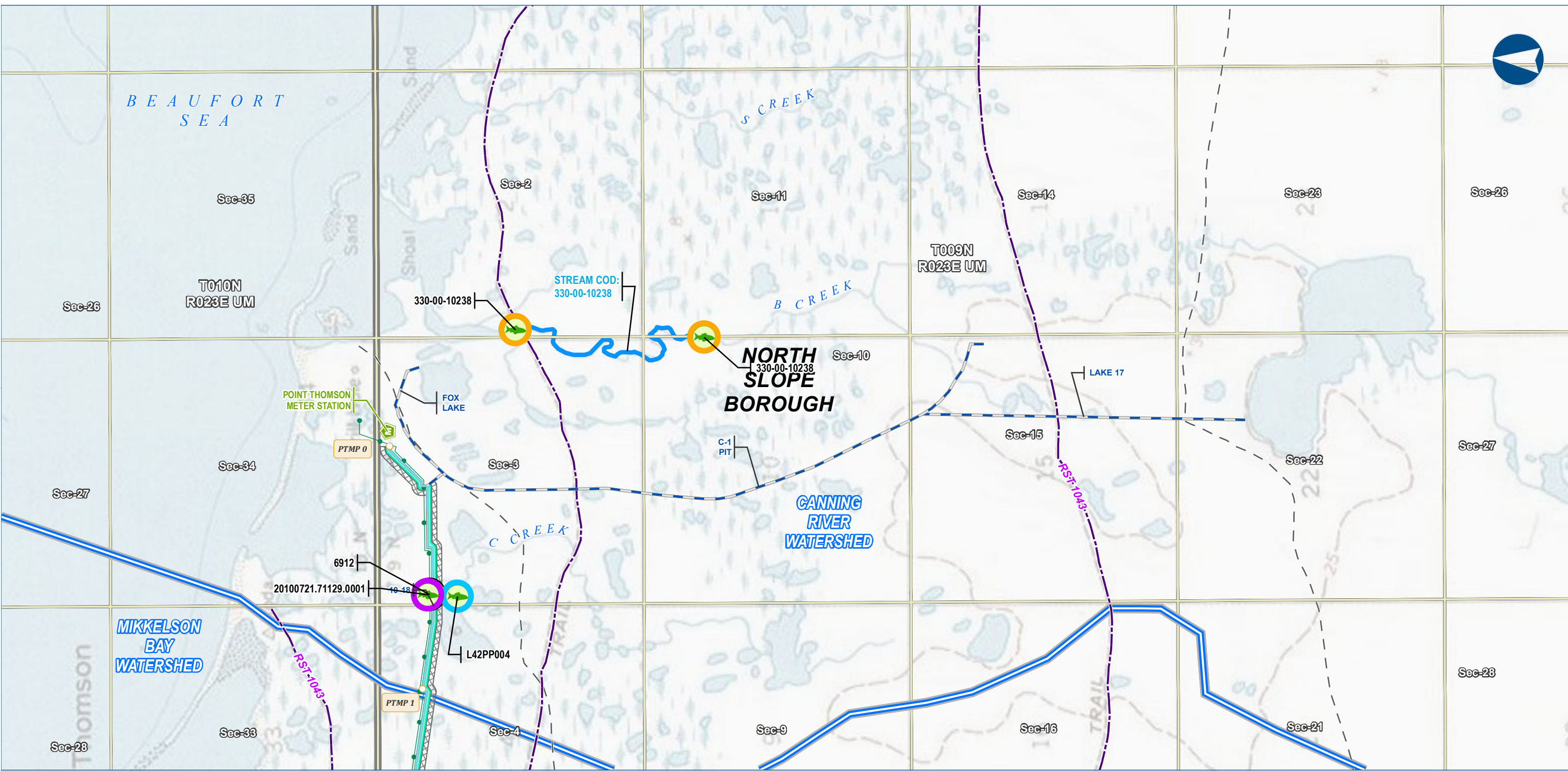
DISCLAIMER
The information contained herein is for informational or planning purposes only. It does not nor should it be deemed to be an offer, request or proposals for rights or occupation of any kind. The Alaska LNG Project Participants and their respective officers, employees and agents, make no warranty, implied or otherwise, nor accept any liability, as to the accuracy or completeness of the information contained in these documents, drawings or electronic files. Do not remove or delete this note from document, drawing or electronic file.
SHEET: COVER PAGE



ALASKA LNG PROJECT		
Fisheries		
Point Thomson Rev C Route		
Off ROW Facilities & Access Roads		
BOROUGH:	NORTH SLOPE	DRAWN BY: AGDC
STATE:	ALASKA	CHECKED BY:
REV. NO.:	REVISION	DATE
A	ISSUED FOR REVIEW	2017-03-20
PRELIMINARY		
1:281,485	0 3 6 Miles	
DATE: 2017-03-20	PROJECTION: NAD83 NSRS2007 STATEPLANE ALASKA 4 FIPS 5004	DWG: RR3_APPENDIX_A_3_4_OFF_PTTL_INDEX_REV_C_CL

**DISCLAIMER**

The information contained herein is for informational or planning purposes only. It does not nor should it be deemed to be an offer, request or proposals for rights or occupation of any kind. The Alaska LNG Project Participants and their respective officers, employees and agents, make no warranty, implied or otherwise, nor accept any liability, as to the accuracy or completeness of the information contained in these documents, drawings or electronic files. Do not remove or delete this note from document, drawing or electronic file.



**Legend**

**PIPELINE**

- Point Thomson Transmission Line
- Ice Pad Access Road
- Meter Station
- Permanent ROW
- Construction ROW

**EXISTING FEATURES**

- Existing Roads
- Revised Statute 2477 Trail
- Off Road Trails
- Existing Pipeline
- Section
- Township

**Fish Survey Location**

- Anadromous Species Observed
- Anadromous or Resident Species Observed
- Resident Species Observed
- Unknown Species Observed
- Anadromous Stream Extent

**Watershed Boundary**

- Watershed Boundary

ALASKA LNG PROJECT Fisheries Point Thomson Rev C Route Off ROW Facilities & Access Roads		
BOROUGH:	NORTH SLOPE	DRAWN BY: AGDC
STATE:	ALASKA	CHECKED BY:
REV. NO.:	REVISION	DATE
A	ISSUED FOR REVIEW	2017-03-28
PRELIMINARY		
1:24,000 0 1/4 1/2 Miles		
DATE: 2017-03-28	PROJECTION: NAD83 NSRS2007 ALASKAZONE4 FTUS 54392	

**DISCLAIMER**

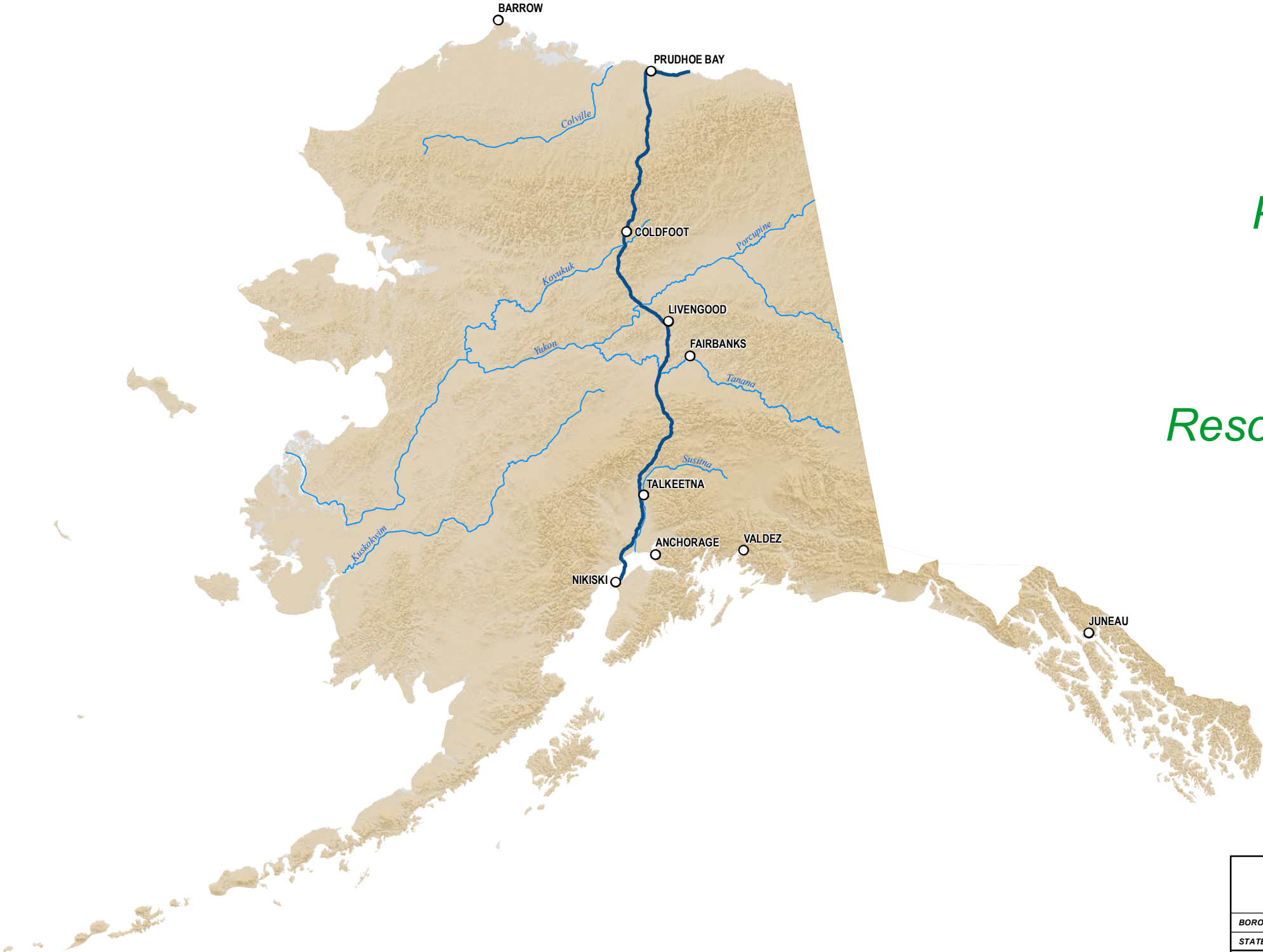
The information contained herein is for informational or planning purposes only. It does not nor should it be deemed to be an offer, request or proposals for rights or occupation of any kind. The Alaska LNG Project Participants and their respective officers, employees and agents, make no warranty, implied or otherwise, nor accept any liability, as to the accuracy or completeness of the information contained in these documents, drawings or electronic files. Do not remove or delete this note from document, drawing or electronic file.

DWG: RR3\_APPENDIX\_A3\_PT\_OFF\_ROW\_TOPO\_REV\_C\_CL SHEET: 1

# Alaska LNG Project

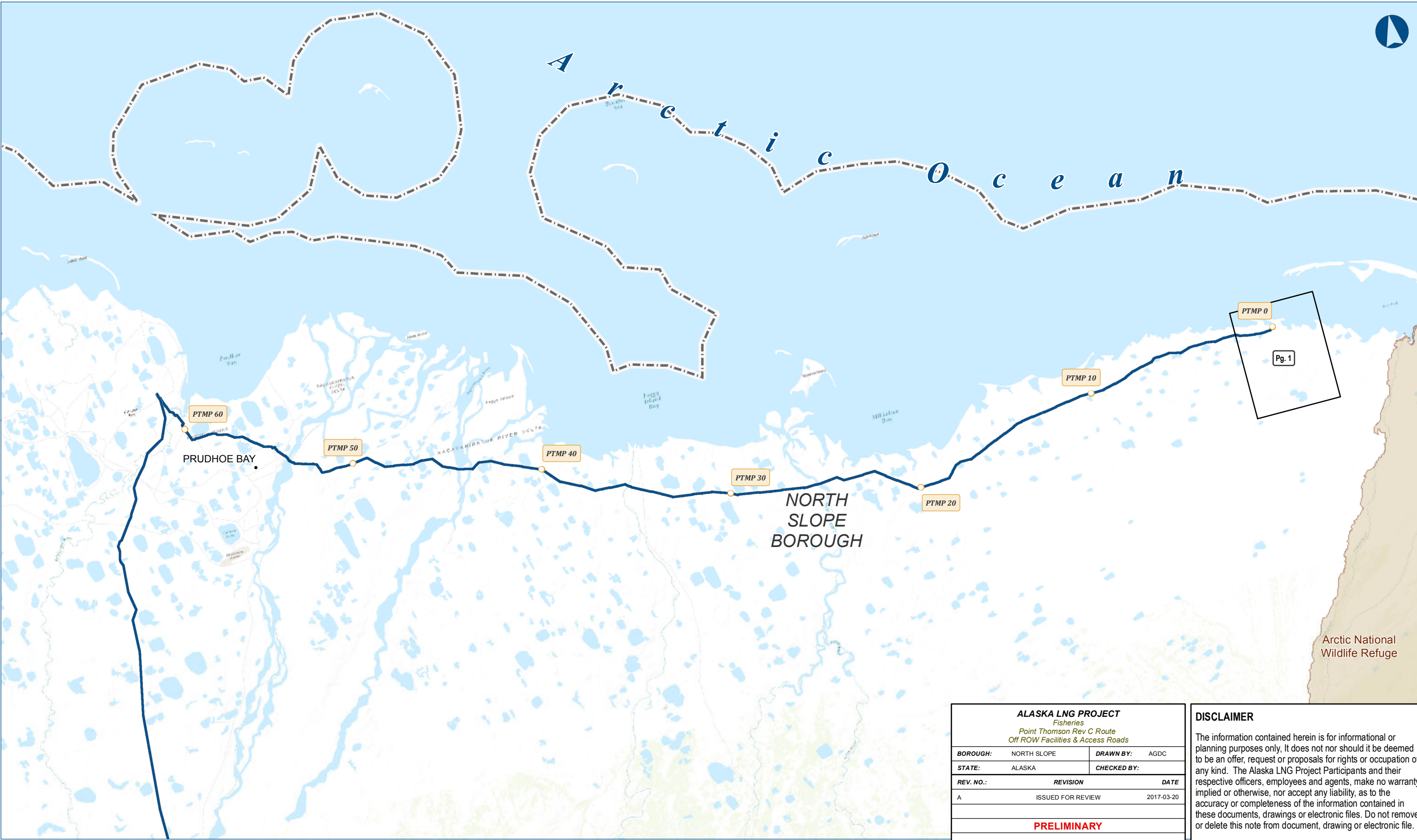
*Fisheries  
Point Thomson Rev C Route  
Off ROW Facilities &  
Access Roads*

*Resource Report 3, Appendix A4  
Aerial Mapping*



ALASKA LNG PROJECT		
Fisheries		
Point Thomson Rev C Route		
Off ROW Facilities & Access Roads		
BOROUGH:	-	DRAWN BY: AGDC
STATE:	ALASKA	CHECKED BY:
REV. NO.:	REVISION	DATE
A	ISSUED FOR REVIEW	2017-03-21
PRELIMINARY		
1:10,000,000	0 100 200 Miles	
DATE: 2017-03-21	PROJECTION: NAD 1983 NSRS2007 STATEPLANE ALASKA 4 FIPS 5004	DWG: RR3_APPENDIX_A4_OFF_PFTL_AERIAL_REV_C_CL_COVER

DISCLAIMER
The information contained herein is for informational or planning purposes only. It does not nor should it be deemed to be an offer, request or proposals for rights or occupation of any kind. The Alaska LNG Project Participants and their respective officers, employees and agents, make no warranty, implied or otherwise, nor accept any liability, as to the accuracy or completeness of the information contained in these documents, drawings or electronic files. Do not remove or delete this note from document, drawing or electronic file.
SHEET: COVER PAGE

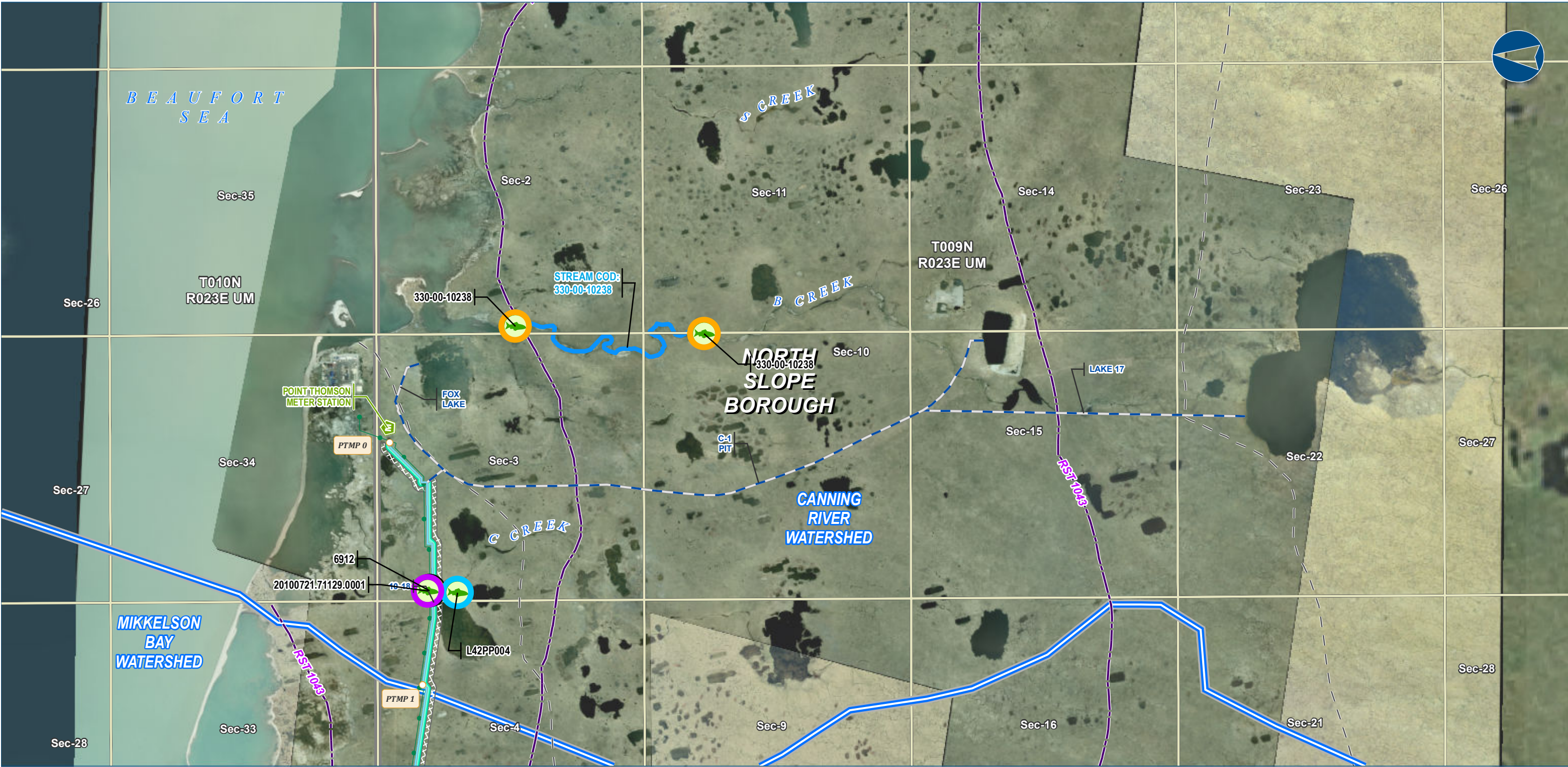


ALASKA LNG PROJECT		
Fisheries		
Point Thomson Rev C Route		
Off ROW Facilities & Access Roads		
BOROUGH:	NORTH SLOPE	DRAWN BY: AGDC
STATE:	ALASKA	CHECKED BY:
REV. NO.:	REVISION	DATE
A	ISSUED FOR REVIEW	2017-03-20
PRELIMINARY		
1:281,485	0 3 6 Miles	
DATE: 2017-03-20	PROJECTION: NAD83 NSRS2007 STATEPLANE ALASKA 4 FIPS 5004	DWG: RR3_APPENDIX_A_3_4_OFF_PTTL_INDEX_REV_C_CL

**DISCLAIMER**

The information contained herein is for informational or planning purposes only. It does not nor should it be deemed to be an offer, request or proposals for rights or occupation of any kind. The Alaska LNG Project Participants and their respective officers, employees and agents, make no warranty, implied or otherwise, nor accept any liability, as to the accuracy or completeness of the information contained in these documents, drawings or electronic files. Do not remove or delete this note from document, drawing or electronic file.

FISHERIES - POINT THOMSON REV C ROUTE - OFF ROW FACILITIES & ACCESS ROADS



Alaska LNG Project

**Legend**

**PIPELINE**

- Point Thomson Transmission Line
- Ice Pad Access Road
- Meter Station
- Permanent ROW
- Construction ROW

**EXISTING FEATURES**

- Existing Roads
- Revised Statute 2477 Trail
- Off Road Trails
- Existing Pipeline
- Section
- Township

**Fish Survey Location**

- Anadromous Species Observed
- Anadromous or Resident Species Observed
- Resident Species Observed
- Unknown Species Observed
- Anadromous Stream Extent

**Watershed Boundary**

- Watershed Boundary

**ALASKA LNG PROJECT**

Fisheries

Point Thomson Rev C Route

Off ROW Facilities & Access Roads

<b>BOROUGH:</b>	NORTH SLOPE	<b>DRAWN BY:</b>	
<b>STATE:</b>	ALASKA	<b>CHECKED BY:</b>	
<b>REV. NO.:</b>	<b>REVISION</b>	<b>DATE</b>	
A	ISSUED FOR REVIEW	2017-03-29	
<b>PRELIMINARY</b>			
1:24,000 0 1/4 1/2 Miles			
<b>DATE:</b>	2017-03-29	<b>PROJECTION:</b>	NAD83 NSRS2007 ALASKAZONE4 FTUS 54392