

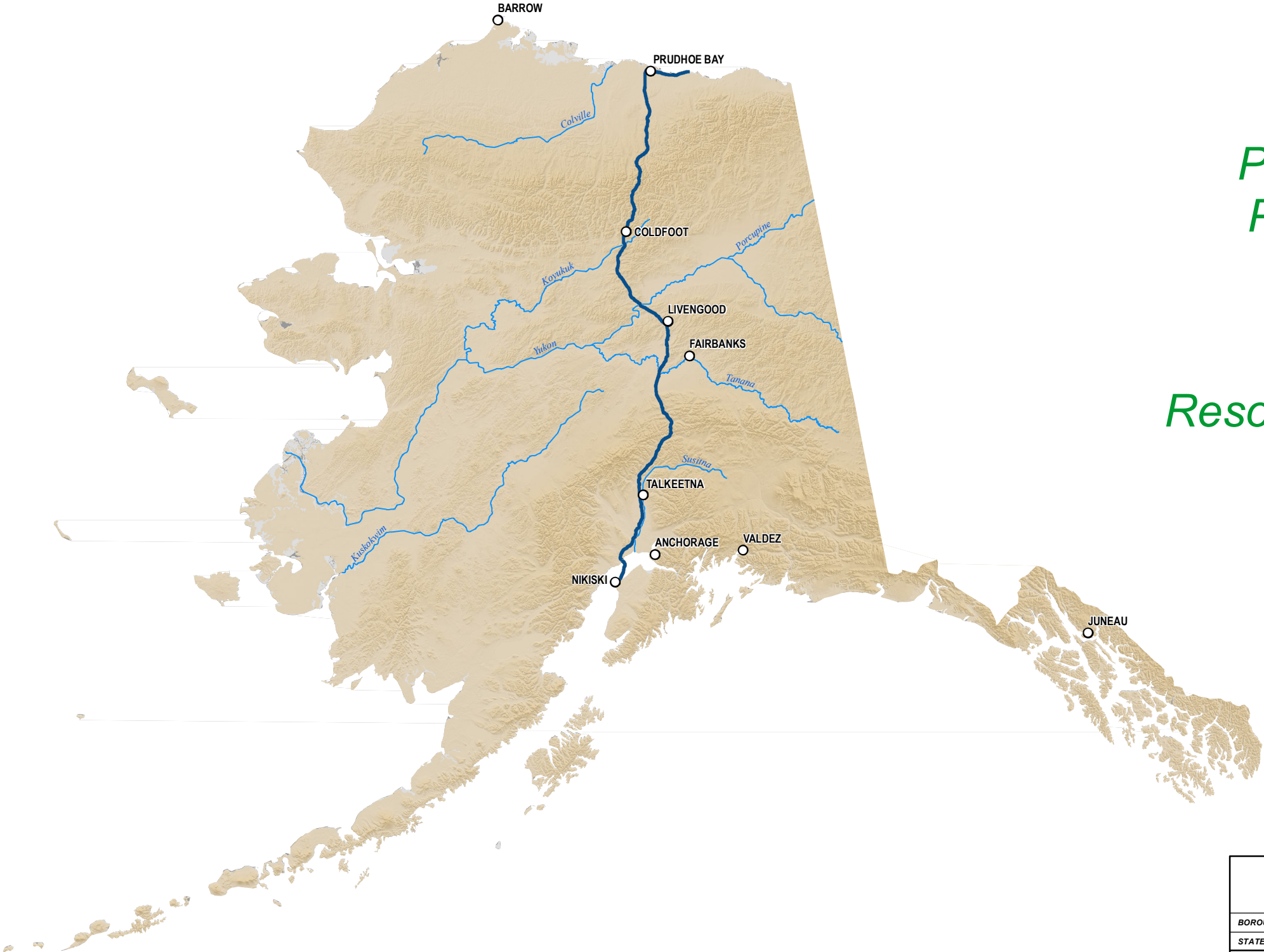
ALASKA LNG PROJECT	DOCKET NO. CP17-____-000 RESOURCE REPORT NO. 1 APPENDIX A PART 10 OF 10	Doc No: USAKE-PT-SRREG-00- 000006-000 APRIL 14, 2017 REVISION: 0
	PUBLIC	

**Part 10 of 10 of Appendix A of Resource Report No. 1**

# Alaska LNG Project

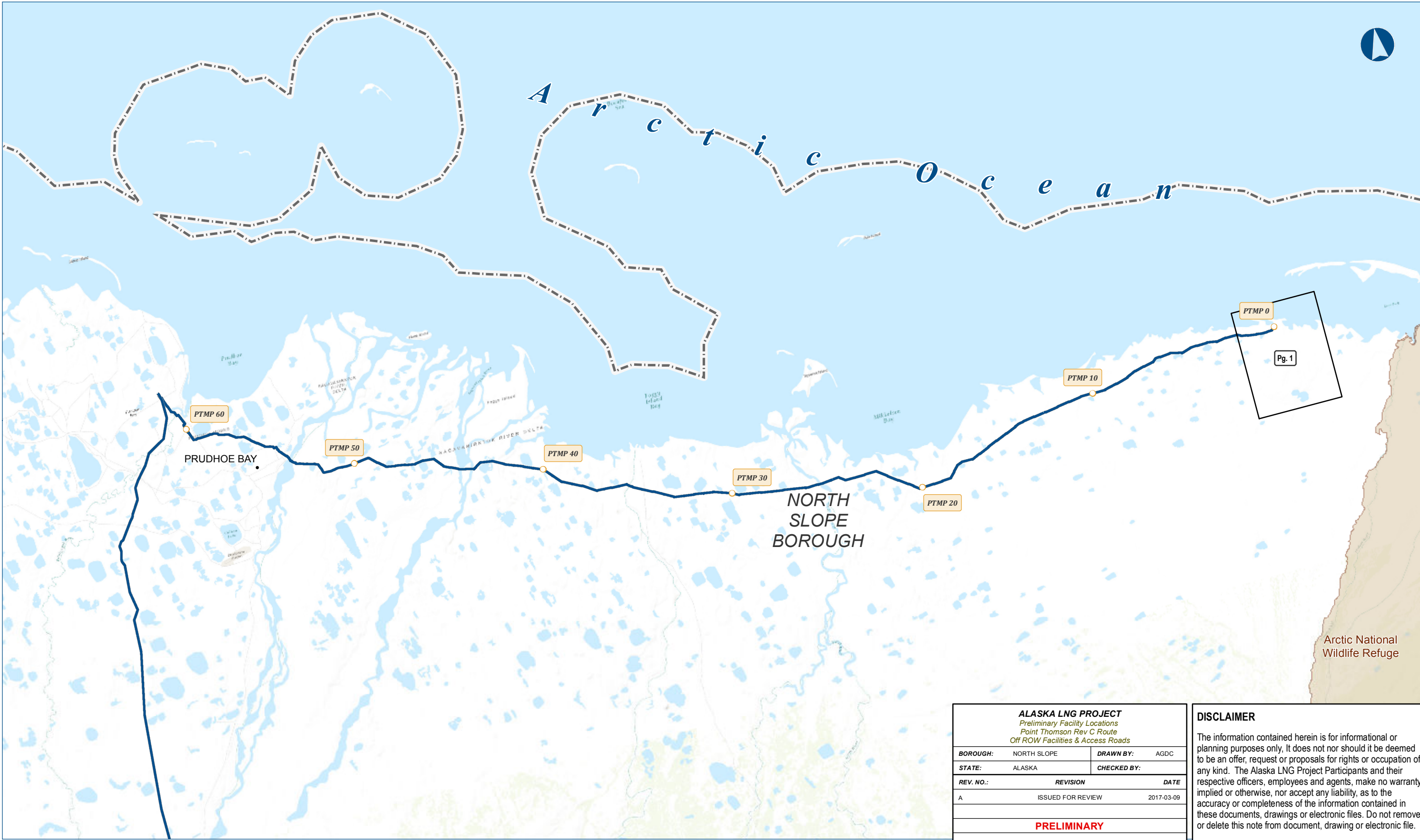
*Preliminary Facility Locations  
Point Thomson Rev C Route  
Off ROW Facilities &  
Access Roads*

*Resource Report 1, Appendix A3  
Topographical Mapping*



ALASKA LNG PROJECT		
Preliminary Facility Locations Point Thomson Rev C Route Off ROW Facilities & Access Roads		
BOROUGH:	-	DRAWN BY: AGDC
STATE:	ALASKA	CHECKED BY:
REV. NO.:	REVISION	DATE
A	ISSUED FOR REVIEW	2017-03-09
PRELIMINARY		
1:10,000,000	0 100 200 Miles	
DATE: 2017-03-09	PROJECTION: NAD 1983 NSRS2007 STATEPLANE ALASKA 4 FIPS 5004	

DISCLAIMER
The information contained herein is for informational or planning purposes only. It does not nor should it be deemed to be an offer, request or proposals for rights or occupation of any kind. The Alaska LNG Project Participants and their respective officers, employees and agents, make no warranty, implied or otherwise, nor accept any liability, as to the accuracy or completeness of the information contained in these documents, drawings or electronic files. Do not remove or delete this note from document, drawing or electronic file.
DWG: RR1_APPENDIX_A3_FT_OFF_ROW_TOPO_REV_C_CL_COVER SHEET: COVER PAGE

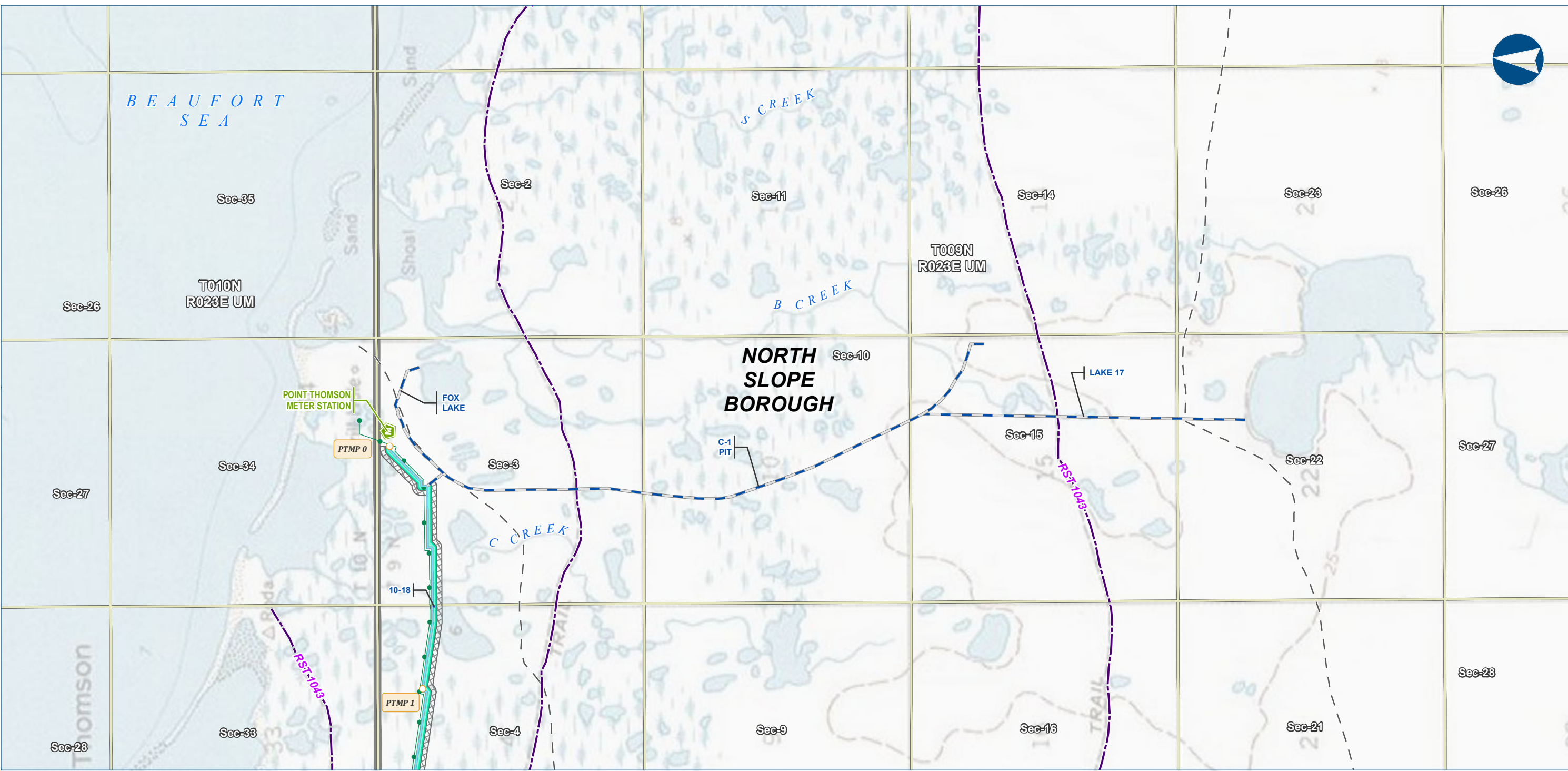


ALASKA LNG PROJECT		
Preliminary Facility Locations		
Point Thomson Rev C Route		
Off ROW Facilities & Access Roads		
BOROUGH:	NORTH SLOPE	DRAWN BY: AGDC
STATE:	ALASKA	CHECKED BY:
REV. NO.:	REVISION	DATE
A	ISSUED FOR REVIEW	2017-03-09
PRELIMINARY		
1:281,485	0 3 6 Miles	
DATE: 2017-03-09	PROJECTION: NAD83 NSRS2007 STATEPLANE ALASKA 4 FIPS 5004	DWG: RR1_APPENDIX_A_3_4_PT_OFF_ROW_REV_C_CL_INDEX SHEET: OFF-INDEX

**DISCLAIMER**

The information contained herein is for informational or planning purposes only. It does not nor should it be deemed to be an offer, request or proposals for rights or occupation of any kind. The Alaska LNG Project Participants and their respective officers, employees and agents, make no warranty, implied or otherwise, nor accept any liability, as to the accuracy or completeness of the information contained in these documents, drawings or electronic files. Do not remove or delete this note from document, drawing or electronic file.





Alaska LNG Project

**Legend**

**PIPELINE**

- Point Thomson Transmission Line
- Ice Pad Access Road
- Meter Station

**EXISTING FEATURES**

- Existing Roads
- Off Road Trails
- Existing Pipeline
- Section
- Township

**ROW**

- Permanent ROW
- Construction ROW

ALASKA LNG PROJECT		
Preliminary Facility Locations		
Point Thomson Rev C Route		
Off ROW Facilities & Access Roads		
BOROUGH:	NORTH SLOPE	DRAWN BY: AGDC
STATE:	ALASKA	CHECKED BY:
REV. NO.:	REVISION	DATE
A	ISSUED FOR REVIEW	2017-03-28
PRELIMINARY		
1:24,000 0 1/4 1/2 Miles		
DATE: 2017-03-28	PROJECTION: NAD83 NSRS2007 ALASKAZONE4 FTUS 54392	

**DISCLAIMER**

The information contained herein is for informational or planning purposes only. It does not nor should it be deemed to be an offer, request or proposals for rights or occupation of any kind. The Alaska LNG Project Participants and their respective officers, employees and agents, make no warranty, implied or otherwise, nor accept any liability, as to the accuracy or completeness of the information contained in these documents, drawings or electronic files. Do not remove or delete this note from document, drawing or electronic file.

DWG: RR1\_APPENDIX\_A3\_PT\_OFF\_ROW\_TOPO\_REV\_C\_CL

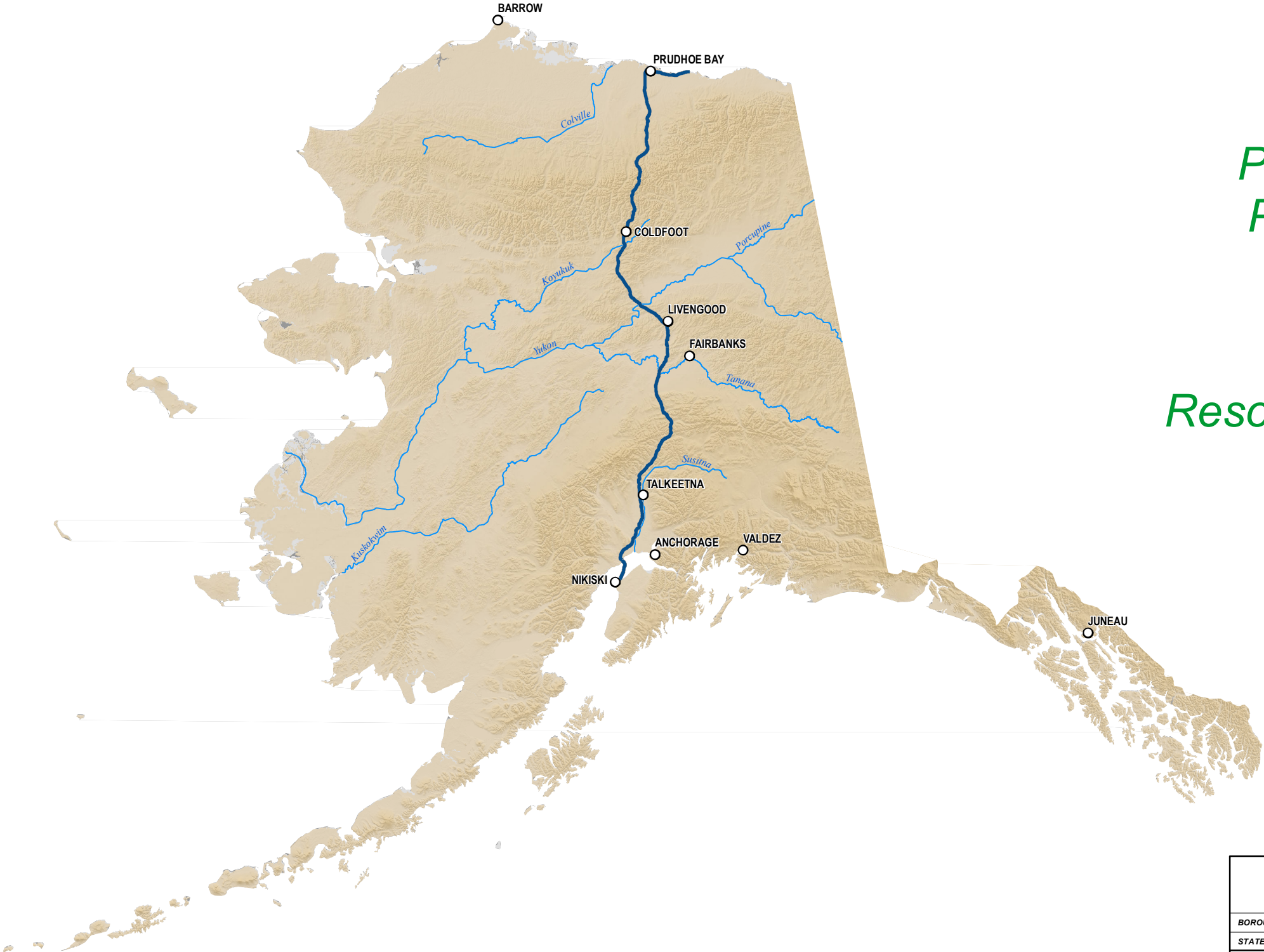
SHEET: 1



# Alaska LNG Project

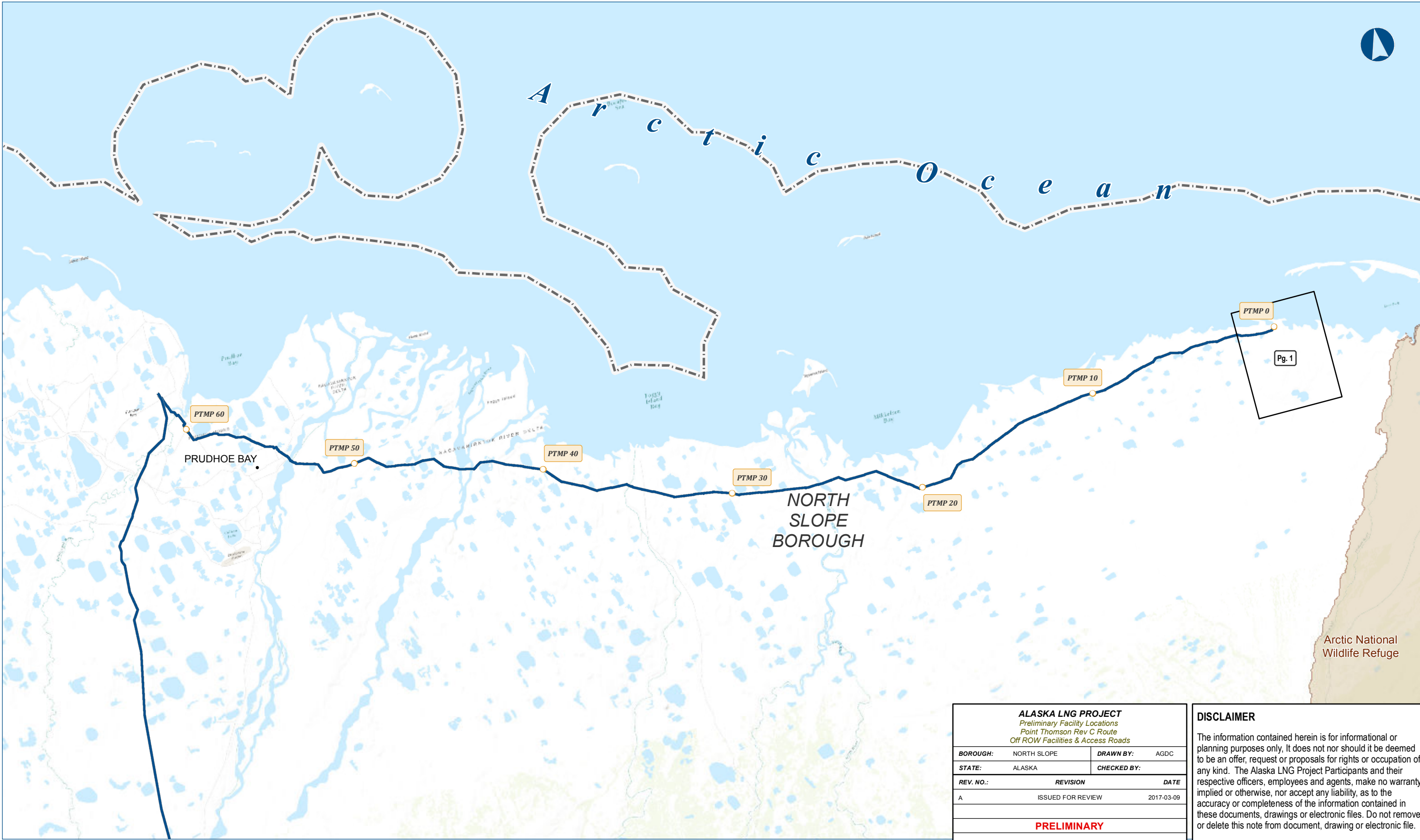
*Preliminary Facility Locations  
Point Thomson Rev C Route  
Off ROW Facilities &  
Access Roads*

*Resource Report 1, Appendix A4  
Aerial Mapping*



ALASKA LNG PROJECT		
Preliminary Facility Locations		
Point Thomson Rev C Route		
Off ROW Facilities & Access Roads		
BOROUGH:	-	DRAWN BY: AGDC
STATE:	ALASKA	CHECKED BY:
REV. NO.:	REVISION	DATE
A	ISSUED FOR REVIEW	2017-03-09
PRELIMINARY		
1:10,000,000	0 100 200 Miles	
DATE: 2017-03-09	PROJECTION: NAD 1983 NSRS2007 STATEPLANE ALASKA 4 FIPS 5004	

DISCLAIMER
The information contained herein is for informational or planning purposes only. It does not nor should it be deemed to be an offer, request or proposals for rights or occupation of any kind. The Alaska LNG Project Participants and their respective officers, employees and agents, make no warranty, implied or otherwise, nor accept any liability, as to the accuracy or completeness of the information contained in these documents, drawings or electronic files. Do not remove or delete this note from document, drawing or electronic file.
DWG: RR1_APPENDIX_A4_PT_OFF_ROW_AERIAL_REV_C_CL_COVER SHEET: COVER PAGE

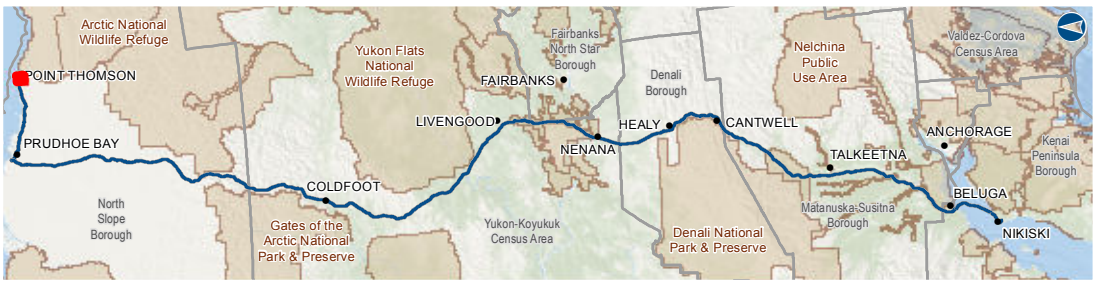
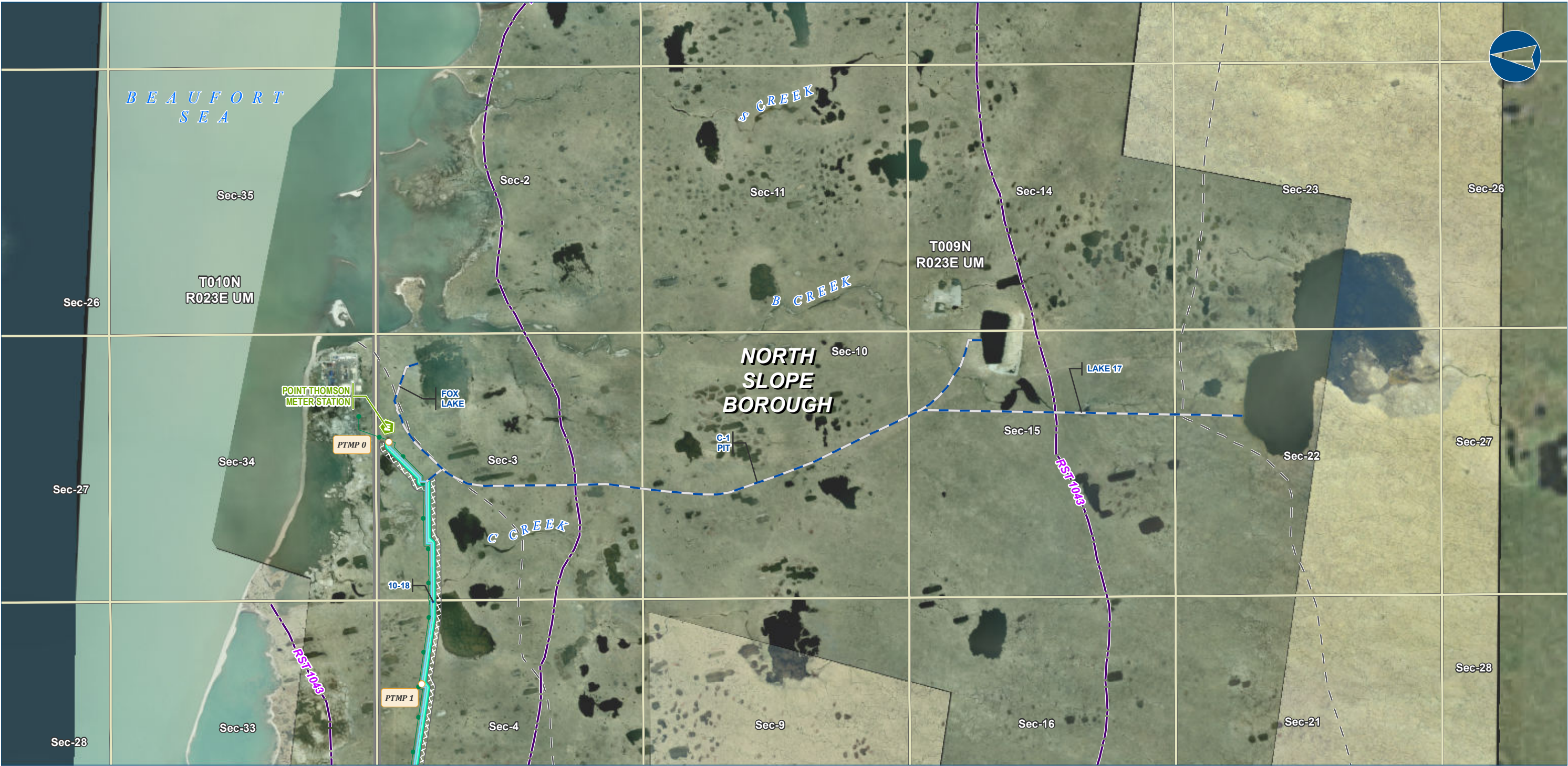


ALASKA LNG PROJECT		
Preliminary Facility Locations		
Point Thomson Rev C Route		
Off ROW Facilities & Access Roads		
BOROUGH:	NORTH SLOPE	DRAWN BY: AGDC
STATE:	ALASKA	CHECKED BY:
REV. NO.:	REVISION	DATE
A	ISSUED FOR REVIEW	2017-03-09
PRELIMINARY		
1:281,485	0 3 6 Miles	
DATE: 2017-03-09	PROJECTION: NAD83 NSRS2007 STATEPLANE ALASKA 4 FIPS 5004	DWG: RR1_APPENDIX_A_3_4_PT_OFF_ROW_REV_C_CL_INDEX SHEET: OFF-INDEX

**DISCLAIMER**

The information contained herein is for informational or planning purposes only. It does not nor should it be deemed to be an offer, request or proposals for rights or occupation of any kind. The Alaska LNG Project Participants and their respective officers, employees and agents, make no warranty, implied or otherwise, nor accept any liability, as to the accuracy or completeness of the information contained in these documents, drawings or electronic files. Do not remove or delete this note from document, drawing or electronic file.





**Legend**

**PIPELINE**

- Point Thomson Transmission Line
- Ice Pad Access Road
- Meter Station

**EXISTING FEATURES**

- Existing Roads
- Off Road Trails
- Existing Pipeline
- Section
- Township

**ROW**

- Permanent ROW
- Construction ROW

ALASKA LNG PROJECT Preliminary Facility Locations Point Thomson Rev C Route Off ROW Facilities & Access Roads		
BOROUGH:	NORTH SLOPE	DRAWN BY: AGDC
STATE:	ALASKA	CHECKED BY:
REV. NO.:	REVISION	DATE
A	ISSUED FOR REVIEW	2017-03-29
PRELIMINARY		
1:24,000 0 1/4 1/2 Miles		
DATE: 2017-03-29	PROJECTION:	NAD83 NSRS2007 ALASKAZONE4 FTUS 54392

**DISCLAIMER**

The information contained herein is for informational or planning purposes only. It does not nor should it be deemed to be an offer, request or proposals for rights or occupation of any kind. The Alaska LNG Project Participants and their respective officers, employees and agents, make no warranty, implied or otherwise, nor accept any liability, as to the accuracy or completeness of the information contained in these documents, drawings or electronic files. Do not remove or delete this note from document, drawing or electronic file.

DWG: RR1\_APPENDIX\_A4\_PT\_OFF\_ROW\_AERIAL\_REV\_C\_CL

SHEET: 1