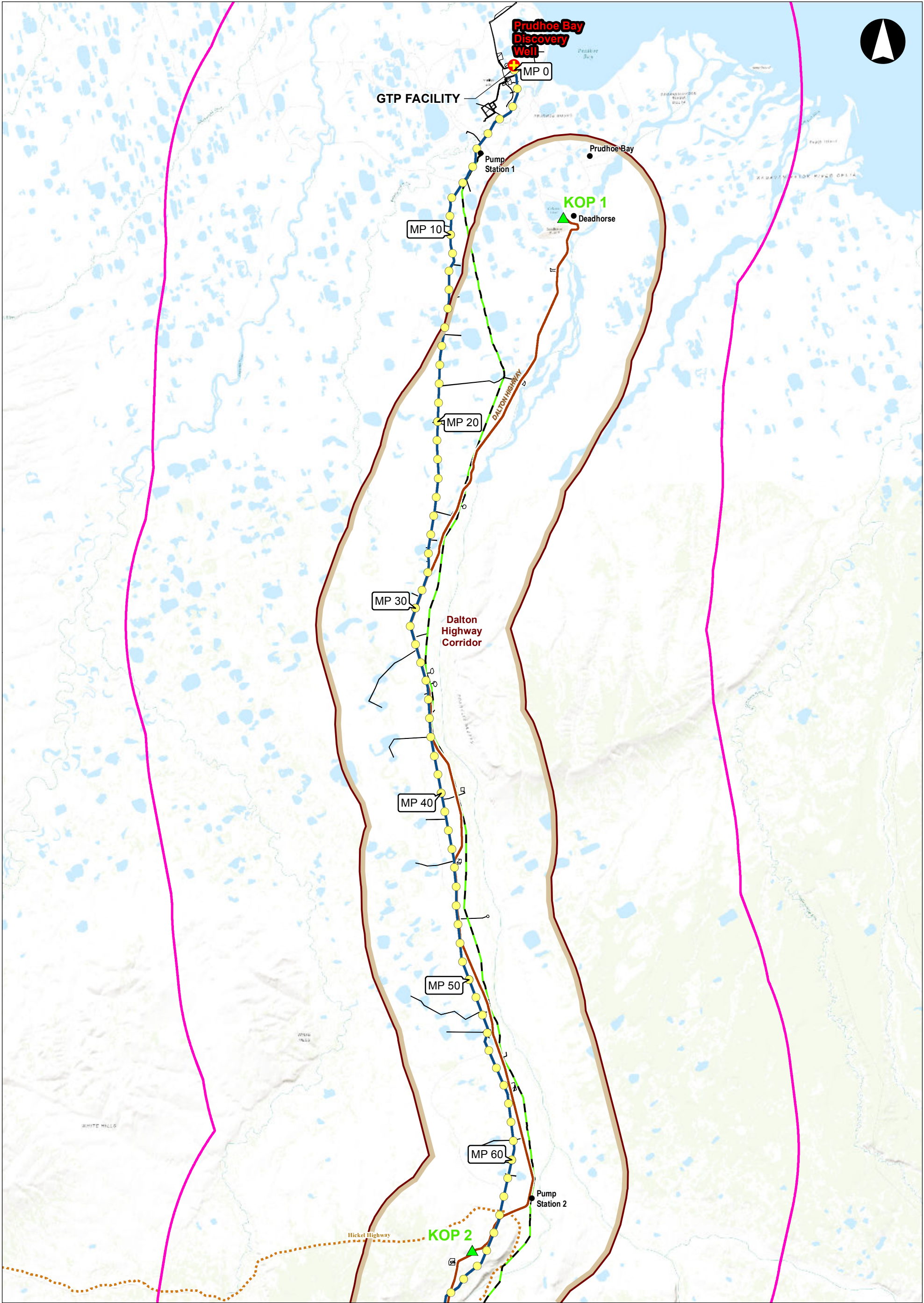


ALASKA LNG PROJECT	DOCKET NO. CP17-____-000 RESOURCE REPORT NO. 8 APPENDIX K – VISUAL RESOURCE SENSITIVE RESOURCES MAPPING	DOC No: USAI-PE-SRREG-00- 000008-000 DATE: APRIL 14, 2017 REVISION: 0
	PUBLIC	

APPENDIX K VISUAL RESOURCE SENSITIVE RESOURCES MAPPING



LEGEND

	Prudhoe Bay Discovery Well		MilePost
	Key Observation Point (with Visual Simulation)		Alaska LNG Rev C2 Route
	Alaska Place Names		Project Footprint
	Scenic Byways		15 Mile Buffer
	Trans Alaska Pipeline		James Dalton Highway Corridor
	RS2477 Trails		

0 3 6 12 Miles

DISCLAIMER

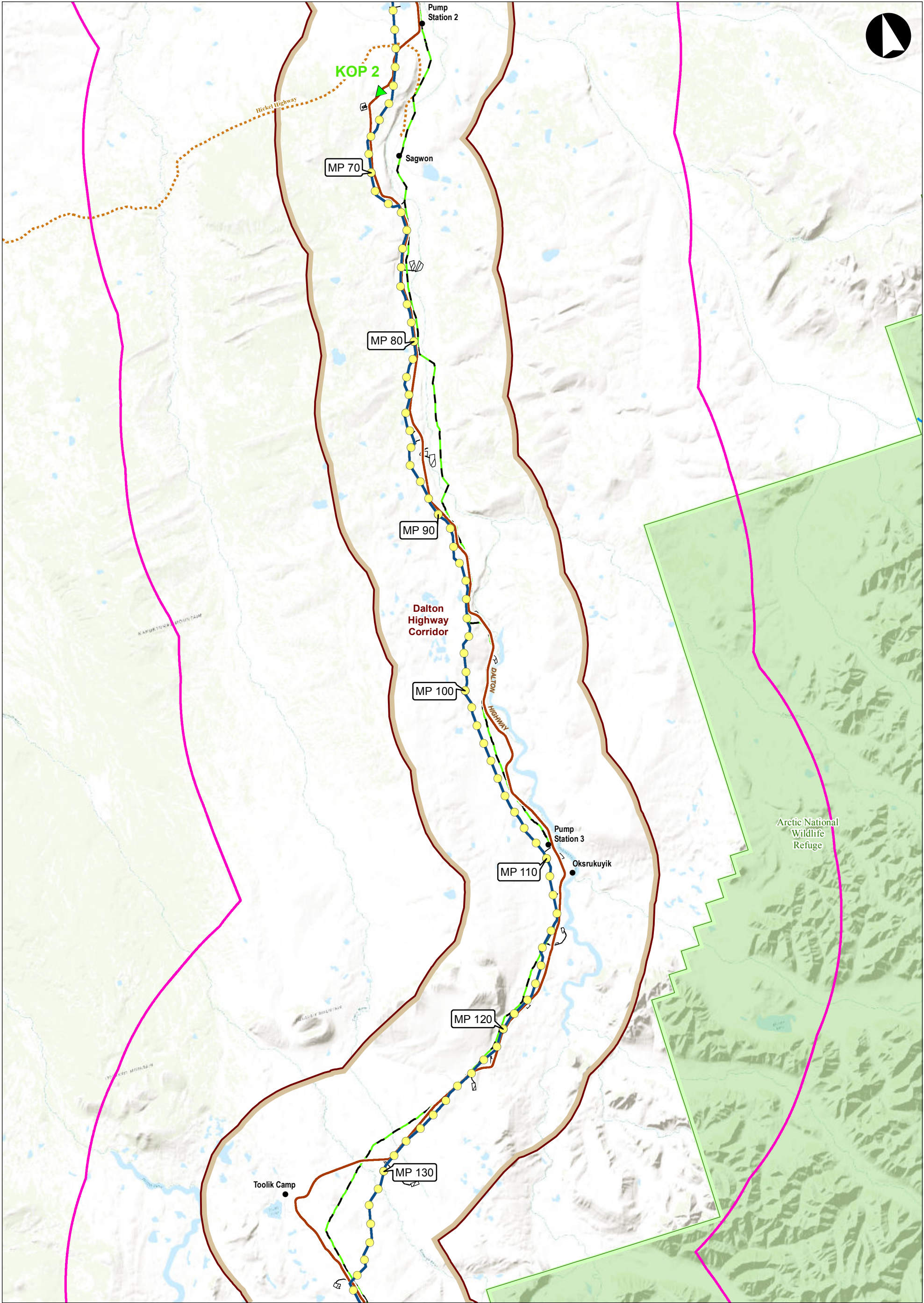
The information contained herein is for informational or planning purposes only. It does not nor should it be deemed to be an offer, request or proposals for rights or occupation of any kind. The Alaska LNG Project Participants and their respective officers, employees and agents, make no warranty, implied or otherwise, nor accept any liability, as to the accuracy or completeness of the information contained in these documents, drawings or electronic files. Do not remove or delete this note from document, drawing or electronic file.

PREPARED BY:	AGDC		
SCALE:	1:300,000		
DATE:	2017-03-31	SHEET:	1 of 12

SENSITIVE VISUAL RESOURCES

LOCATIONS OF SENSITIVE RESOURCES WITHIN 15 MILES OF THE PROPOSED PROJECT

ALASKA LNG



LEGEND

	Key Observation Point (with Visual Simulation)		MilePost
	Alaska Place Names		Alaska LNG Rev C2 Route
	Scenic Byways		Project Footprint
	Trans Alaska Pipeline		15 Mile Buffer
	RS2477 Trails		James Dalton Highway Corridor
	Wild and Scenic River		State and Federal Conservation Lands

0 3 6 12 Miles

DISCLAIMER

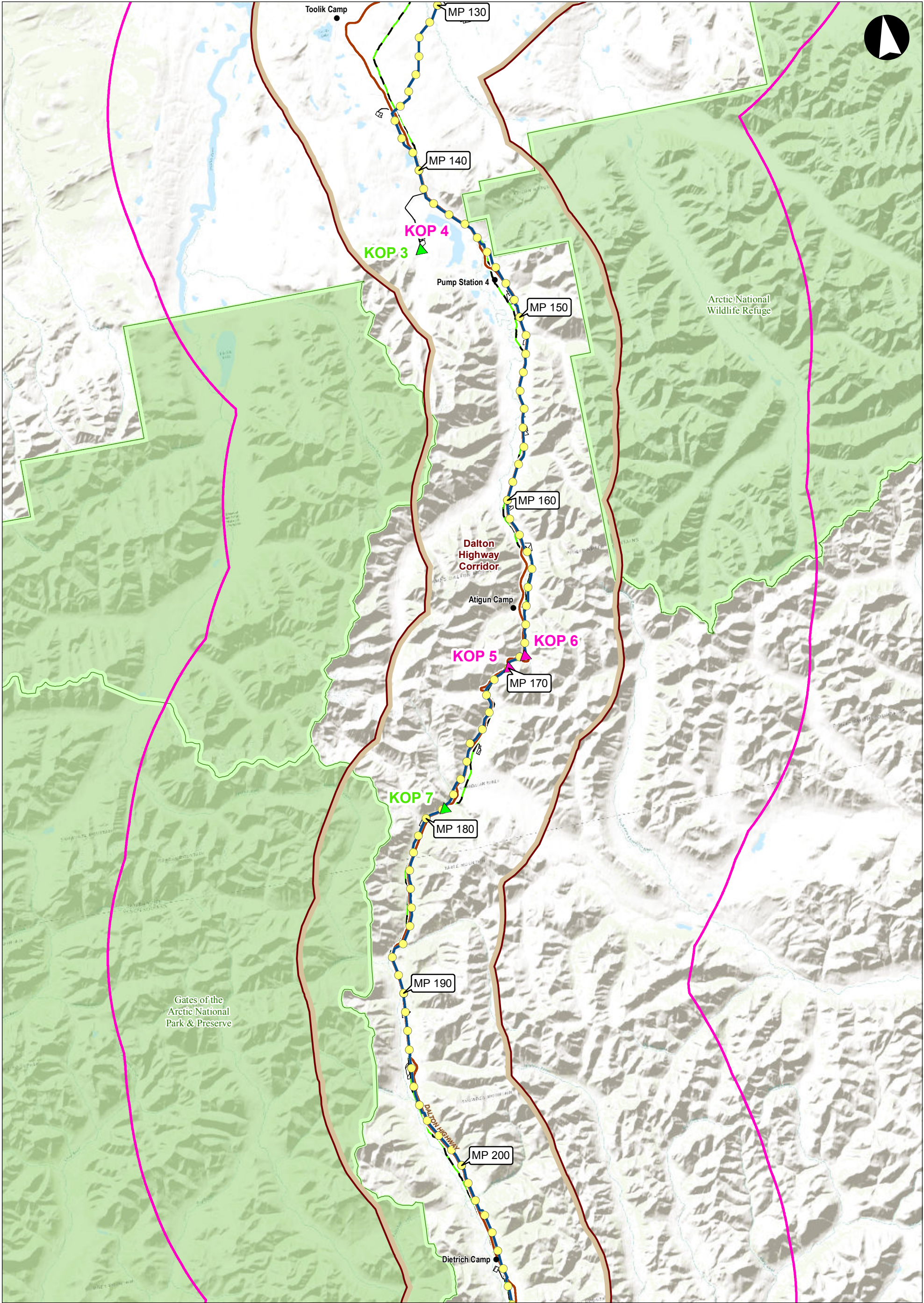
The information contained herein is for informational or planning purposes only. It does not nor should it be deemed to be an offer, request or proposals for rights or occupation of any kind. The Alaska LNG Project Participants and their respective officers, employees and agents, make no warranty, implied or otherwise, nor accept any liability, as to the accuracy or completeness of the information contained in these documents, drawings or electronic files. Do not remove or delete this note from document, drawing or electronic file.

PREPARED BY:	AGDC		
SCALE:	1:300,000		
DATE:	2017-03-31	SHEET:	2 of 12

SENSITIVE VISUAL RESOURCES

LOCATIONS OF SENSITIVE RESOURCES WITHIN 15 MILES OF THE PROPOSED PROJECT

ALASKA LNG



LEGEND

	Key Observation Point		MilePost
	Key Observation Point (with Visual Simulation)		Alaska LNG Rev C2 Route
	Alaska Place Names		Project Footprint
	Scenic Byways		15 Mile Buffer
	Trans Alaska Pipeline		James Dalton Highway Corridor
			State and Federal Conservation Lands

0 3 6 12 Miles

DISCLAIMER

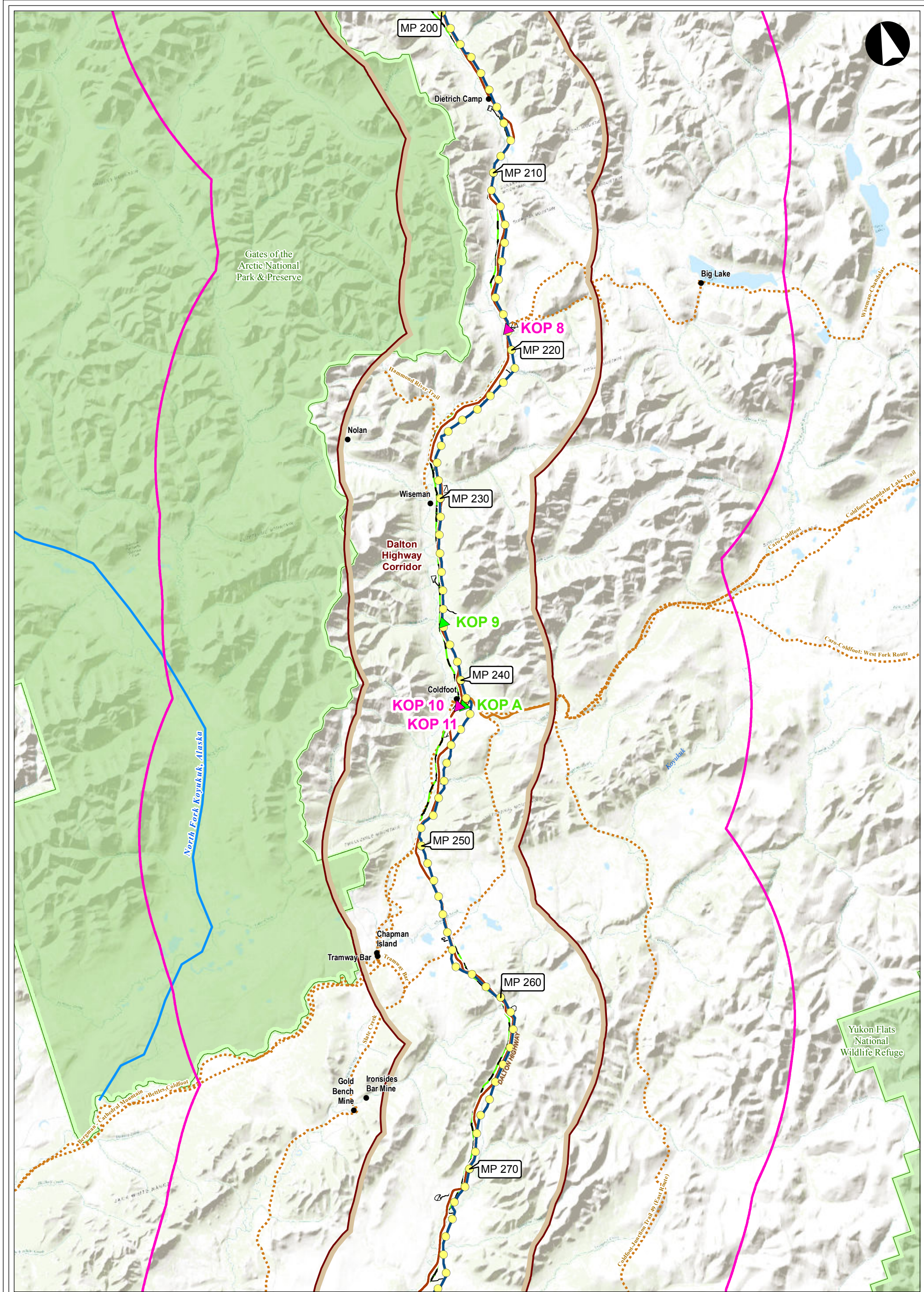
The information contained herein is for informational or planning purposes only. It does not nor should it be deemed to be an offer, request or proposals for rights or occupation of any kind. The Alaska LNG Project Participants and their respective officers, employees and agents, make no warranty, implied or otherwise, nor accept any liability, as to the accuracy or completeness of the information contained in these documents, drawings or electronic files. Do not remove or delete this note from document, drawing or electronic file.

PREPARED BY:	AGDC		
SCALE:	1:300,000		
DATE:	2017-03-31	SHEET:	3 of 12

SENSITIVE VISUAL RESOURCES

LOCATIONS OF SENSITIVE RESOURCES WITHIN 15 MILES OF THE PROPOSED PROJECT

ALASKA LNG



LEGEND

	Key Observation Point		MilePost
	Key Observation Point (with Visual Simulation)		Alaska LNG Rev C2 Route
	Alaska Place Names		Project Footprint
	Scenic Byways		15 Mile Buffer
	Trans Alaska Pipeline		James Dalton Highway Corridor
	RS2477 Trails		State and Federal Conservation Lands
	Wild and Scenic River		

0 3 6 12 Miles

DISCLAIMER

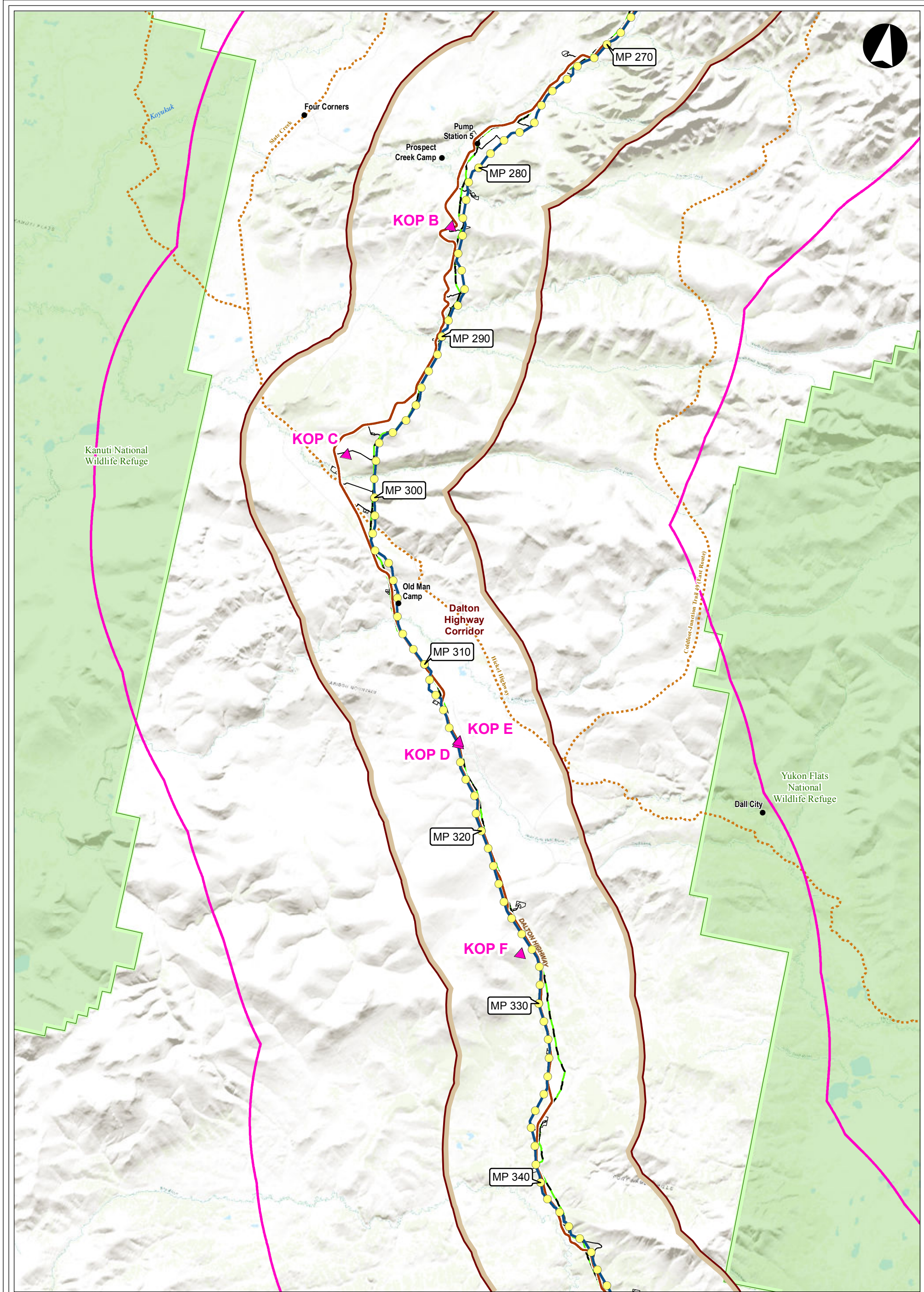
The information contained herein is for informational or planning purposes only. It does not nor should it be deemed to be an offer, request or proposals for rights or occupation of any kind. The Alaska LNG Project Participants and their respective officers, employees and agents, make no warranty, implied or otherwise, nor accept any liability, as to the accuracy or completeness of the information contained in these documents, drawings or electronic files. Do not remove or delete this note from document, drawing or electronic file.

PREPARED BY:	AGDC
SCALE:	1:300,000
DATE:	2017-03-31
SHEET:	4 of 12

SENSITIVE VISUAL RESOURCES

LOCATIONS OF SENSITIVE RESOURCES WITHIN 15 MILES OF THE PROPOSED PROJECT

ALASKA LNG



LEGEND

	Key Observation Point		MilePost
	Alaska Place Names		Alaska LNG Rev C2 Route
	Scenic Byways		Project Footprint
	Trans Alaska Pipeline		15 Mile Buffer
	RS2477 Trails		James Dalton Highway Corridor
			State and Federal Conservation Lands

0 3 6 12 Miles

DISCLAIMER

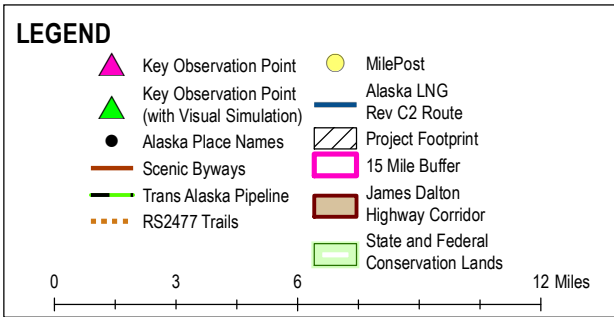
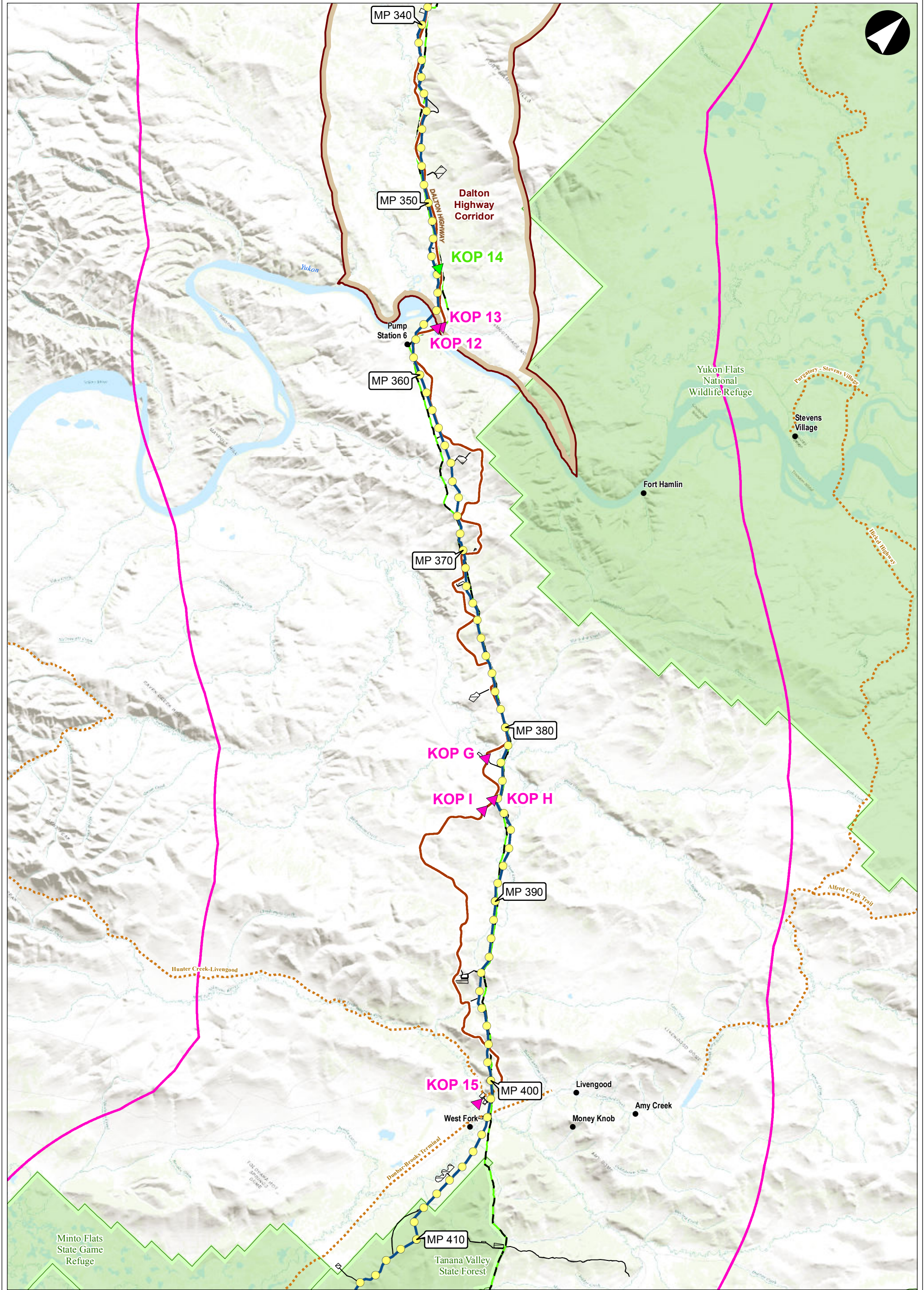
The information contained herein is for informational or planning purposes only. It does not nor should it be deemed to be an offer, request or proposals for rights or occupation of any kind. The Alaska LNG Project Participants and their respective officers, employees and agents, make no warranty, implied or otherwise, nor accept any liability, as to the accuracy or completeness of the information contained in these documents, drawings or electronic files. Do not remove or delete this note from document, drawing or electronic file.

PREPARED BY:	AGDC
SCALE:	1:300,000
DATE:	2017-03-31
SHEET:	5 of 12

SENSITIVE VISUAL RESOURCES

LOCATIONS OF SENSITIVE RESOURCES WITHIN 15 MILES OF THE PROPOSED PROJECT

ALASKA LNG



DISCLAIMER

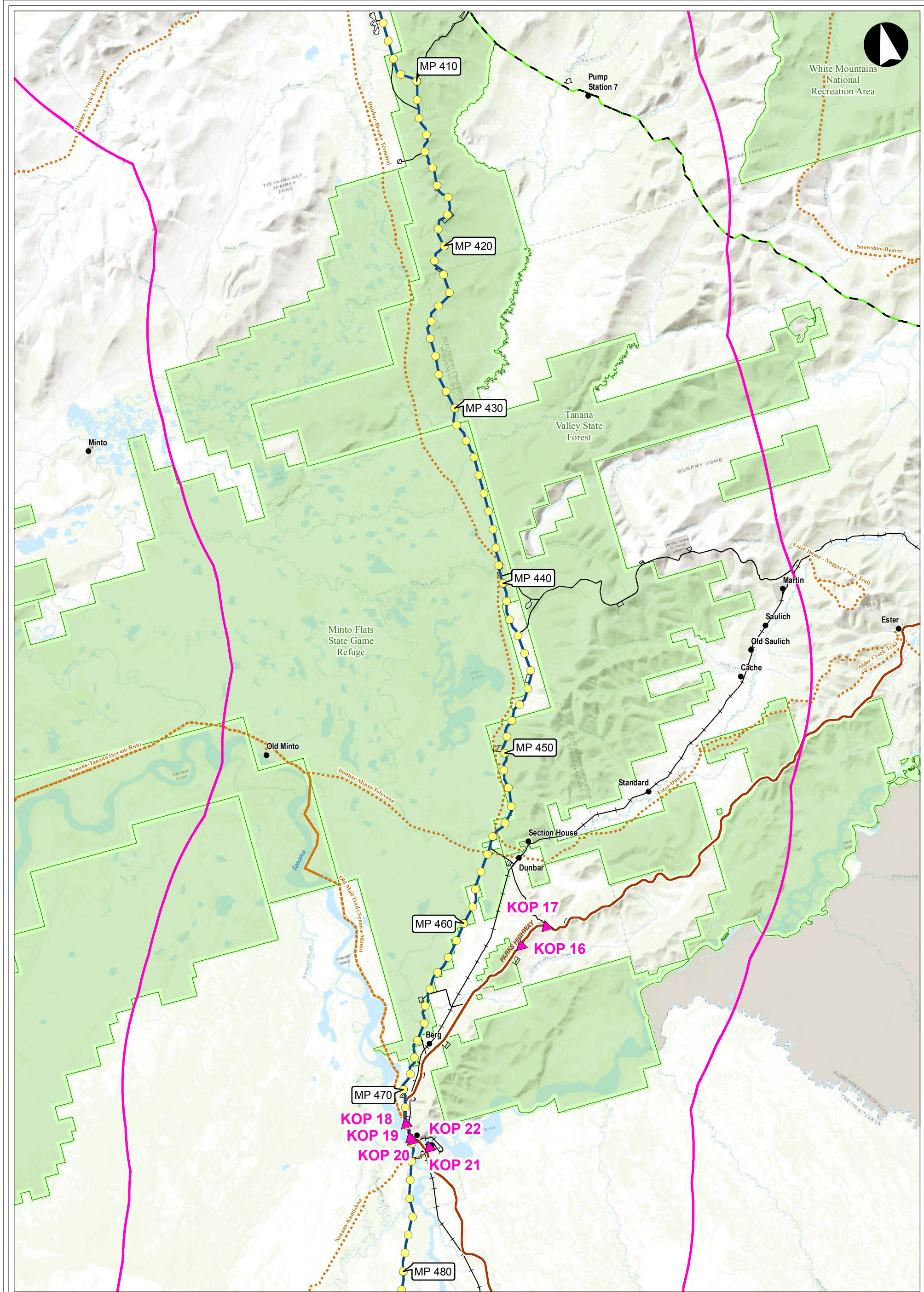
The information contained herein is for informational or planning purposes only. It does not nor should it be deemed to be an offer, request or proposals for rights or occupation of any kind. The Alaska LNG Project Participants and their respective officers, employees and agents, make no warranty, implied or otherwise, nor accept any liability, as to the accuracy or completeness of the information contained in these documents, drawings or electronic files. Do not remove or delete this note from document, drawing or electronic file.

PREPARED BY:	AGDC		
SCALE:	1:300,000		
DATE:	2017-03-31	SHEET:	6 of 12

SENSITIVE VISUAL RESOURCES

LOCATIONS OF SENSITIVE RESOURCES WITHIN 15 MILES OF THE PROPOSED PROJECT

ALASKA LNG



LEGEND

	Key Observation Point		MilePost
	Alaska Place Names		Alaska LNG Rev C2 Route
	Scenic Byways		Project Footprint
	Trans Alaska Pipeline		15 Mile Buffer
	Alaska Railroad		State and Federal Conservation Lands
	RS2477 Trails		

0 3 6 12 Miles

DISCLAIMER

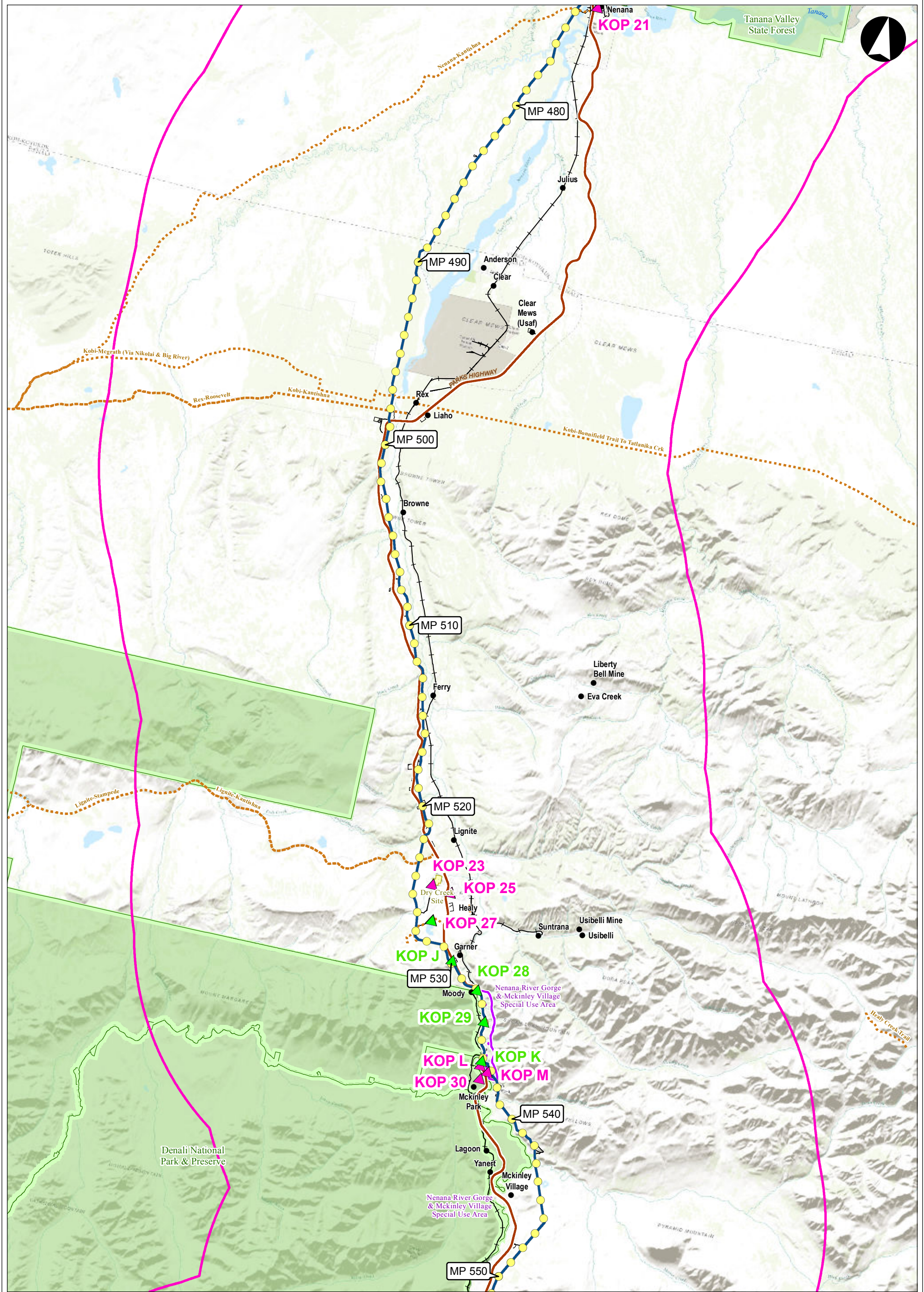
The information contained herein is for informational or planning purposes only. It does not nor should it be deemed to be an offer, request or proposals for rights or occupation of any kind. The Alaska LNG Project Participants and their respective officers, employees and agents, make no warranty, implied or otherwise, nor accept any liability, as to the accuracy or completeness of the information contained in these documents, drawings or electronic files. Do not remove or delete this note from document, drawing or electronic file.

PREPARED BY:	AGDC
SCALE:	1:300,000
DATE:	2017-03-31
SHEET:	7 of 12

SENSITIVE VISUAL RESOURCES

LOCATIONS OF SENSITIVE RESOURCES WITHIN 15 MILES OF THE PROPOSED PROJECT

ALASKA LNG



LEGEND

	Key Observation Point		MilePost
	Key Observation Point (with Visual Simulation)		Alaska LNG
	Alaska Place Names		Rev C2 Route
	Scenic Byways		Project Footprint
	Alaska Railroad		15 Mile Buffer
	RS2477 Trails		ILMA Parks
			ADNR Special Use Lands
			State and Federal Conservation Lands

0 3 6 12 Miles

DISCLAIMER

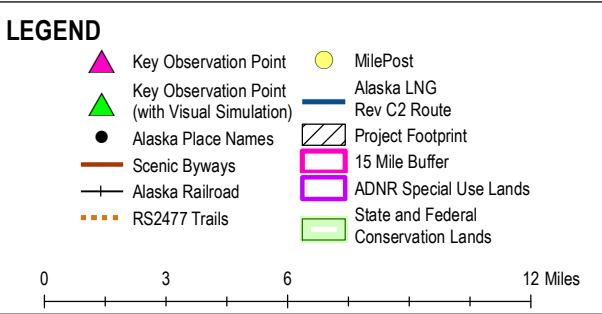
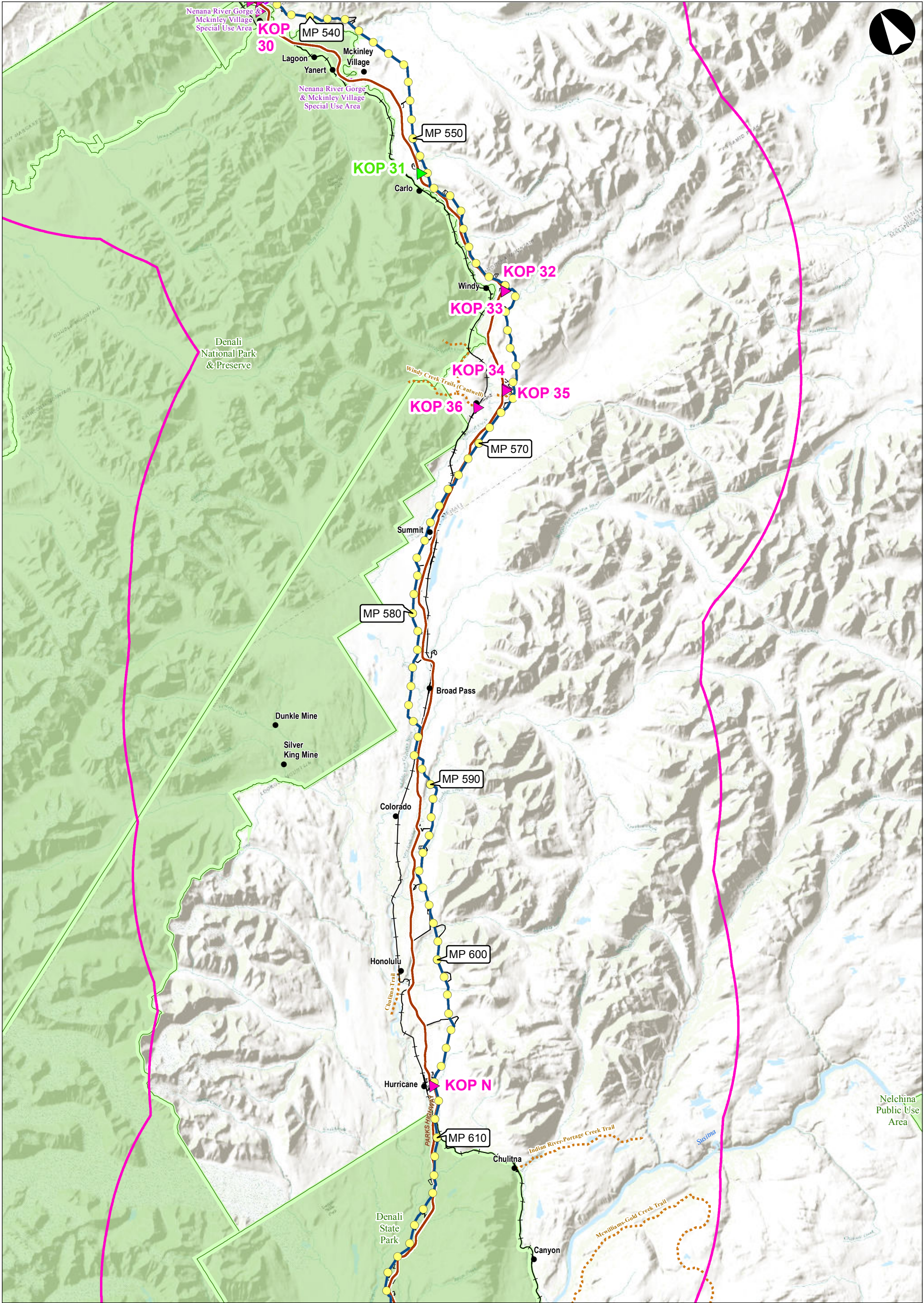
The information contained herein is for informational or planning purposes only. It does not nor should it be deemed to be an offer, request or proposals for rights or occupation of any kind. The Alaska LNG Project Participants and their respective officers, employees and agents, make no warranty, implied or otherwise, nor accept any liability, as to the accuracy or completeness of the information contained in these documents, drawings or electronic files. Do not remove or delete this note from document, drawing or electronic file.

PREPARED BY:	AGDC
SCALE:	1:300,000
DATE:	2017-03-31
SHEET:	8 of 12

SENSITIVE VISUAL RESOURCES

LOCATIONS OF SENSITIVE RESOURCES WITHIN 15 MILES OF THE PROPOSED PROJECT

ALASKA LNG



DISCLAIMER

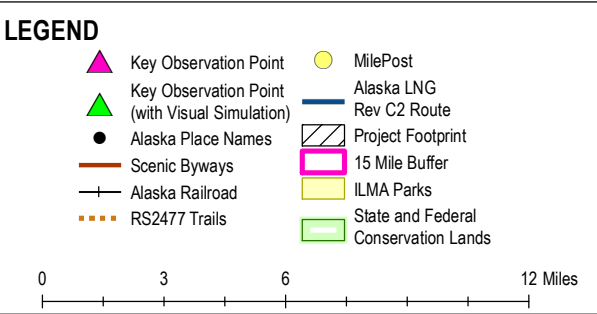
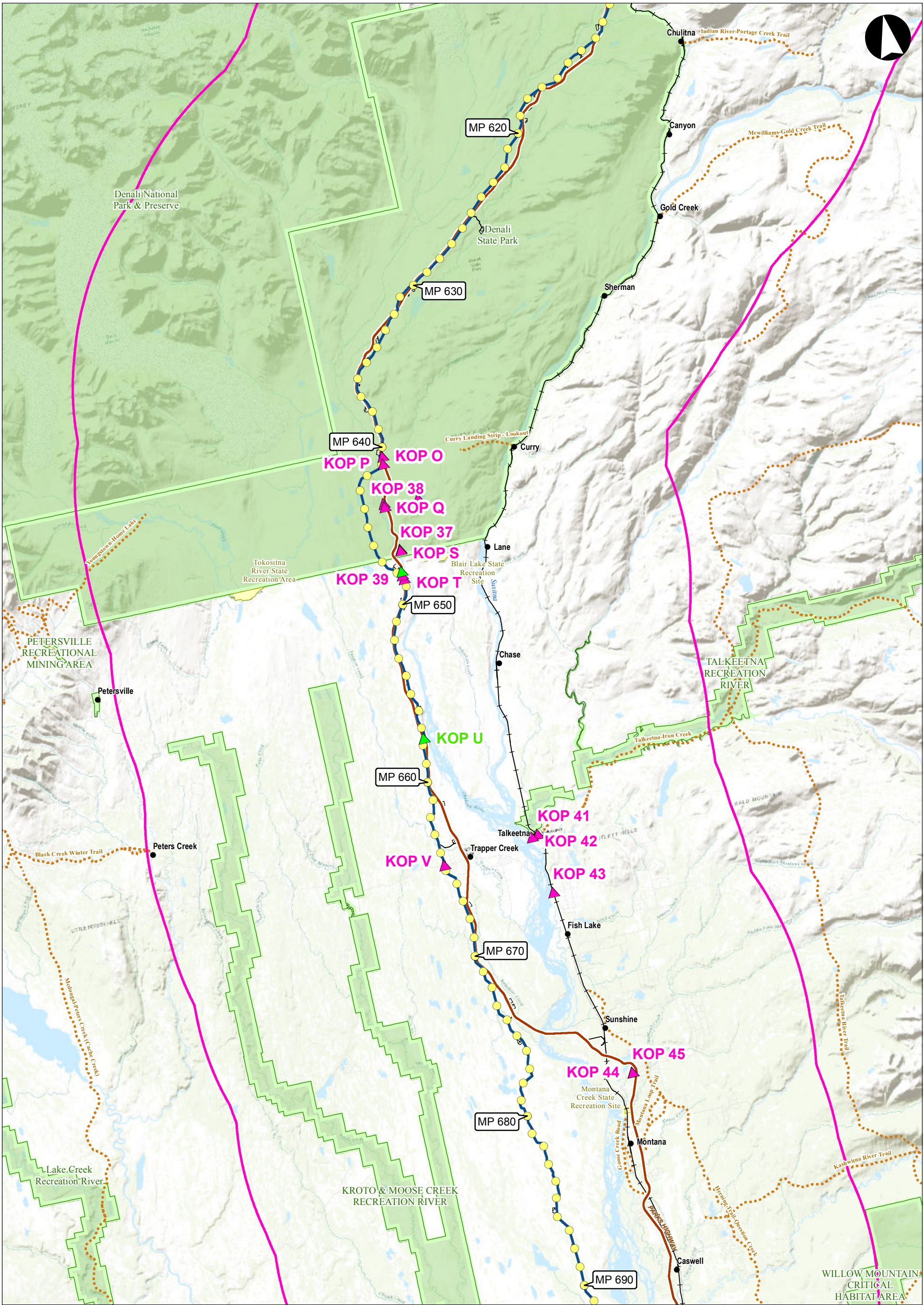
The information contained herein is for informational or planning purposes only. It does not nor should it be deemed to be an offer, request or proposals for rights or occupation of any kind. The Alaska LNG Project Participants and their respective officers, employees and agents, make no warranty, implied or otherwise, nor accept any liability, as to the accuracy or completeness of the information contained in these documents, drawings or electronic files. Do not remove or delete this note from document, drawing or electronic file.

PREPARED BY:	AGDC
SCALE:	1:300,000
DATE:	2017-03-31
SHEET:	9 of 12

SENSITIVE VISUAL RESOURCES

LOCATIONS OF SENSITIVE RESOURCES WITHIN 15 MILES OF THE PROPOSED PROJECT

ALASKA LNG



DISCLAIMER

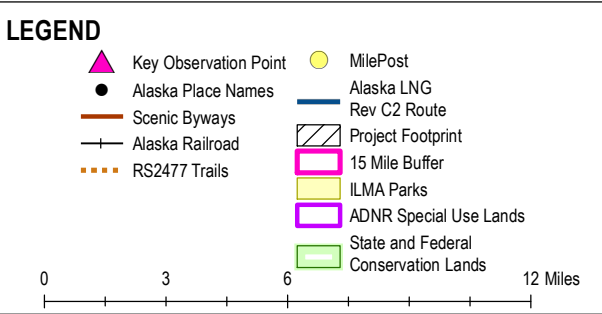
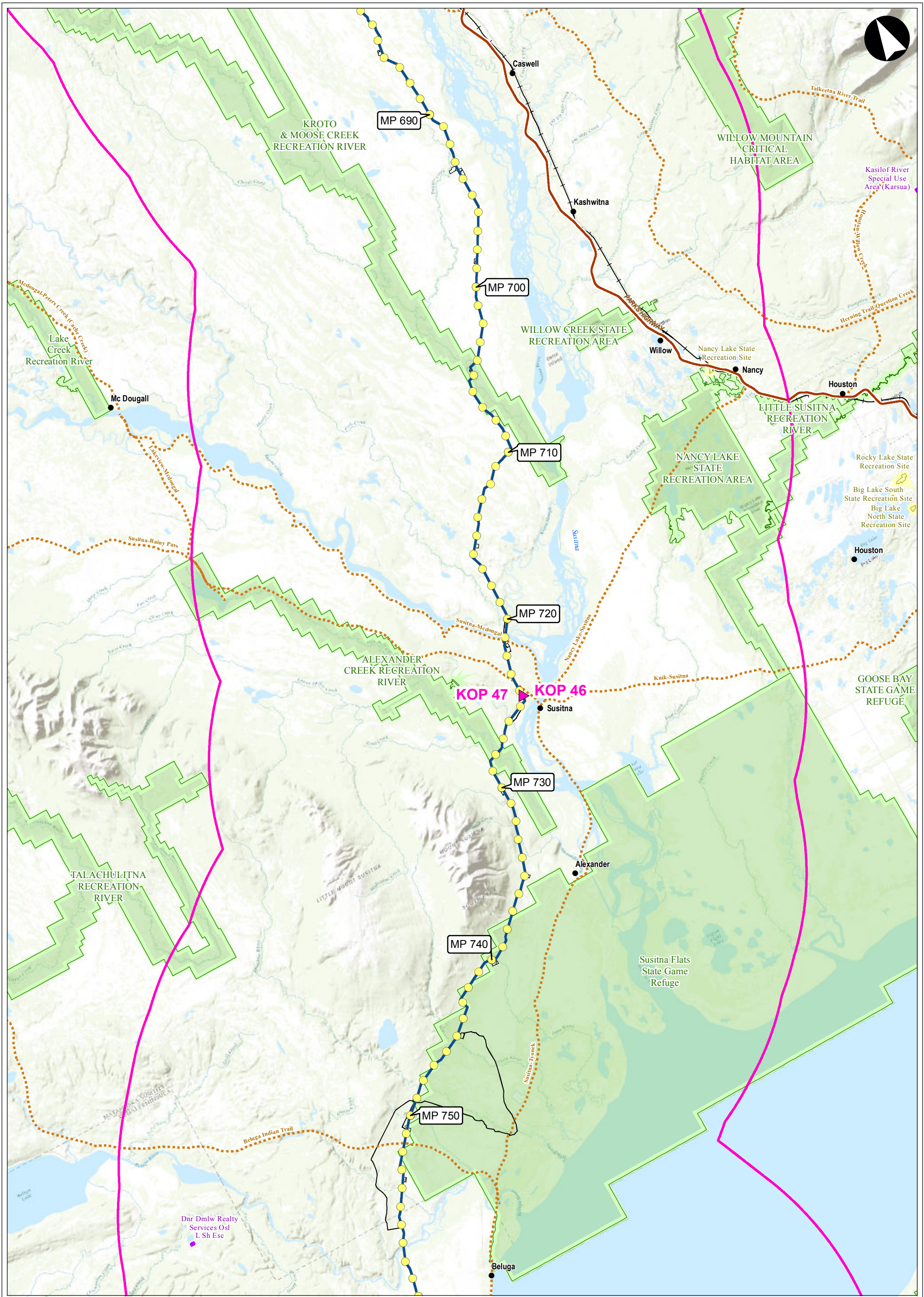
The information contained herein is for informational or planning purposes only. It does not nor should it be deemed to be an offer, request or proposals for rights or occupation of any kind. The Alaska LNG Project Participants and their respective officers, employees and agents, make no warranty, implied or otherwise, nor accept any liability, as to the accuracy or completeness of the information contained in these documents, drawings or electronic files. Do not remove or delete this note from document, drawing or electronic file.

PREPARED BY:	AGDC
SCALE:	1:300,000
DATE:	2017-03-31
SHEET:	10 of 12

SENSITIVE VISUAL RESOURCES

LOCATIONS OF SENSITIVE RESOURCES WITHIN 15 MILES OF THE PROPOSED PROJECT

ALASKA LNG



DISCLAIMER

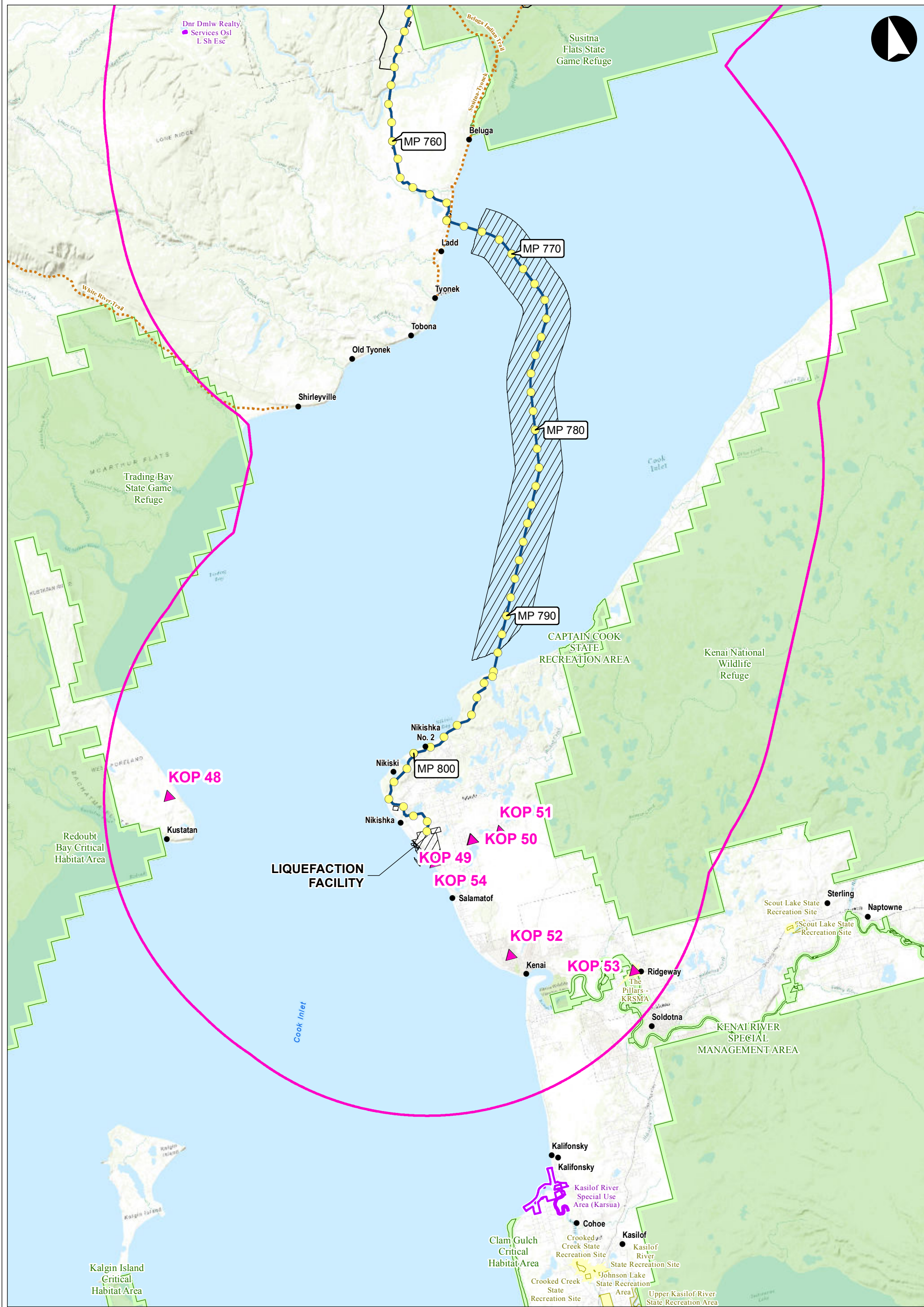
The information contained herein is for informational or planning purposes only. It does not nor should it be deemed to be an offer, request or proposals for rights or occupation of any kind. The Alaska LNG Project Participants and their respective officers, employees and agents, make no warranty, implied or otherwise, nor accept any liability, as to the accuracy or completeness of the information contained in these documents, drawings or electronic files. Do not remove or delete this note from document, drawing or electronic file.

PREPARED BY:	AGDC
SCALE:	1:300,000
DATE:	2017-03-31
SHEET:	11 of 12

SENSITIVE VISUAL RESOURCES

LOCATIONS OF SENSITIVE RESOURCES WITHIN 15 MILES OF THE PROPOSED PROJECT

ALASKA LNG



LEGEND

-
- ▲ Key Observation Point
 ● Alaska Place Names
 ---- RS2477 Trails
 ● MilePost
 — Alaska LNG
 — Rev C2 Route
 ▨ Project Footprint
 ■ 15 Mile Buffer
 ■ ILMA Parks
 ■ ADNR Special Use Lands
 ■ State and Federal Conservation Lands
- 3 6 12 Miles

DISCLAIMER

The information contained herein is for informational or planning purposes only. It does not nor should it be deemed to be an offer, request or proposals for rights or occupation of any kind. The Alaska LNG Project Participants and their respective officers, employees and agents, make no warranty, implied or otherwise, nor accept any liability, as to the accuracy or completeness of the information contained in these documents, drawings or electronic files. Do not remove or delete this note from document, drawing or electronic file.

PREPARED BY:	AGDC		
SCALE:	1:300,000		
DATE:	2017-03-31	SHEET:	12 of 12

**SENSITIVE
VISUAL RESOURCES**

LOCATIONS OF SENSITIVE RESOURCES WITHIN 15 MILES OF THE PROPOSED PROJECT

ALASKA LNG