

ALASKA LNG PROJECT	DOCKET No. CP17-____-000 RESOURCE REPORT No. 10 APPENDIX B – LNG FACILITY SITING ALTERNATIVES	Doc No: USAI-EX-SRREG-00- 000010-000 DATE: APRIL 14, 2017 REVISION: 0
	PUBLIC	

APPENDIX B LNG FACILITY SITING ALTERNATIVES

The following maps are included in this Appendix:

Liquefaction Facility Siting Analysis Overview Maps – Cook Inlet

Liquefaction Facility Siting Analysis Overview Maps – Lower Kenai Peninsula

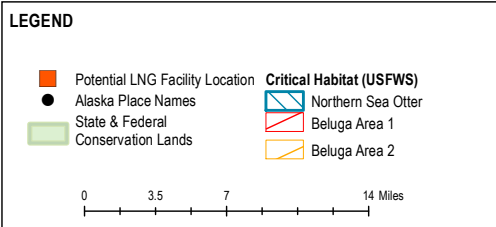
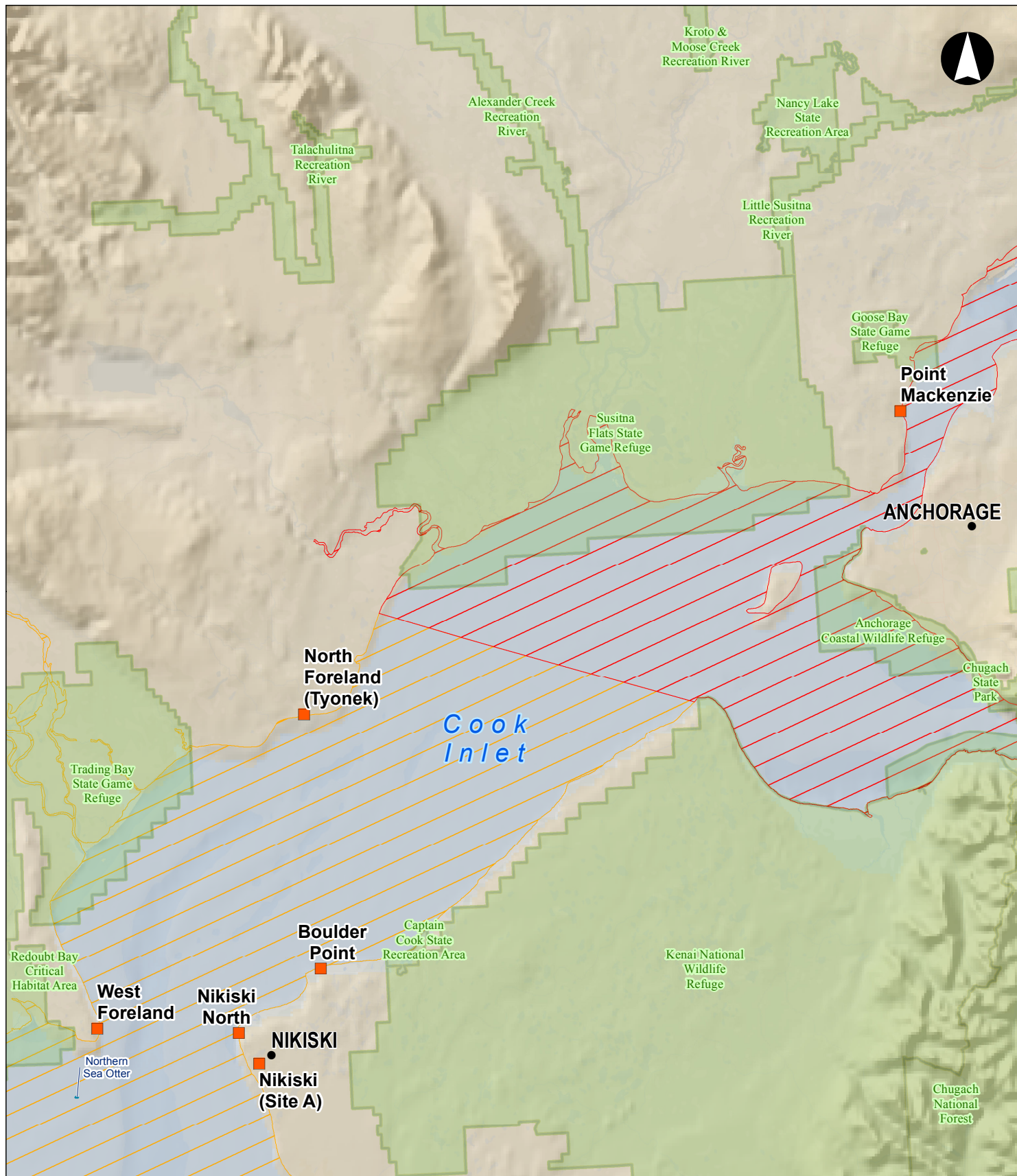
Liquefaction Facility Siting Analysis Overview Maps – Prince William Sound

Liquefaction Facility Siting Analysis Figures – All Sites

Liquefaction Facility Siting Analysis Figures – Sites Selected for Further Evaluation

Major Pipeline Delivery Options Overview Map

Liquefaction Facility Siting Analysis Overview Maps - Cook Inlet



DISCLAIMER

The information contained herein is for informational or planning purposes only. It does not nor should it be deemed to be an offer, request or proposals for rights or occupation of any kind. The Alaska LNG Project Participants and their respective officers, employees and agents, make no warranty, implied or otherwise, nor accept any liability, as to the accuracy or completeness of the information contained in these documents, drawings or electronic files. Do not remove or delete this note from document, drawing or electronic file.

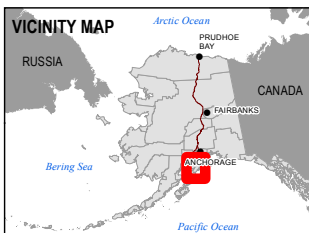
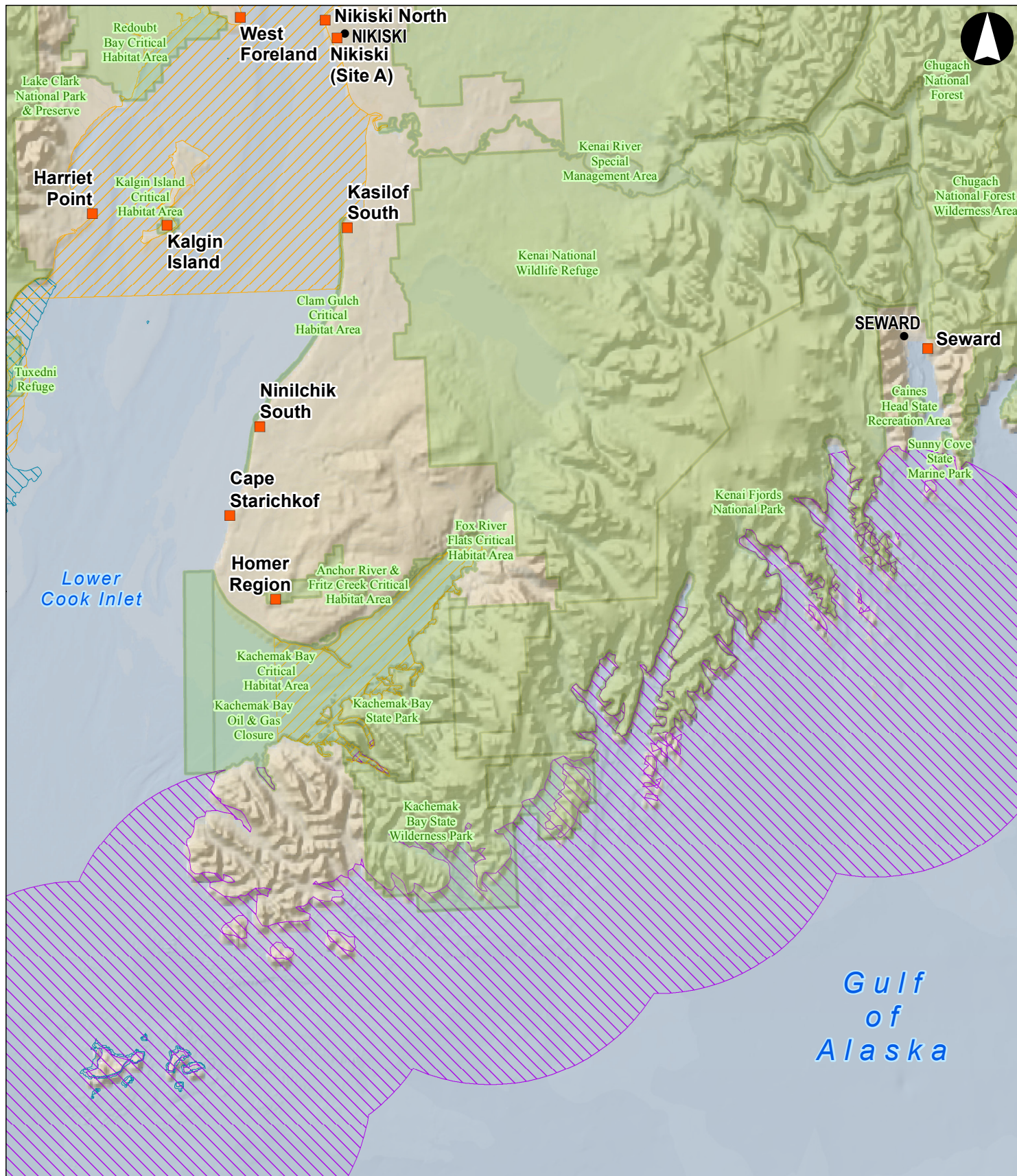
PREPARED BY:	EXP ENERGY SERVICES INC.
SCALE:	1:600,000
DATE:	2016-01-23
SHEET:	B-01

POTENTIAL LIQUEFACTION FACILITY SITING LOCATIONS - OVERVIEW

B-01 COOK INLET

ALASKA LNG

Liquefaction Facility Siting Analysis Overview Maps - Lower Kenai Peninsula



LEGEND

- Potential LNG Siting Locations
- Alaska Place Names
- State & Federal Conservation Lands
- Critical Habitat (USFWS)
- Northern Sea Otter
- Steller Sea Lion
- Beluga Whales Critical Habitat
- Area 2

0 5 10 20 Miles

DISCLAIMER

The information contained herein is for informational or planning purposes only. It does not nor should it be deemed to be an offer, request or proposals for rights or occupation of any kind. The Alaska LNG Project Participants and their respective officers, employees and agents, make no warranty, implied or otherwise, nor accept any liability, as to the accuracy or completeness of the information contained in these documents, drawings or electronic files. Do not remove or delete this note from document, drawing or electronic file.

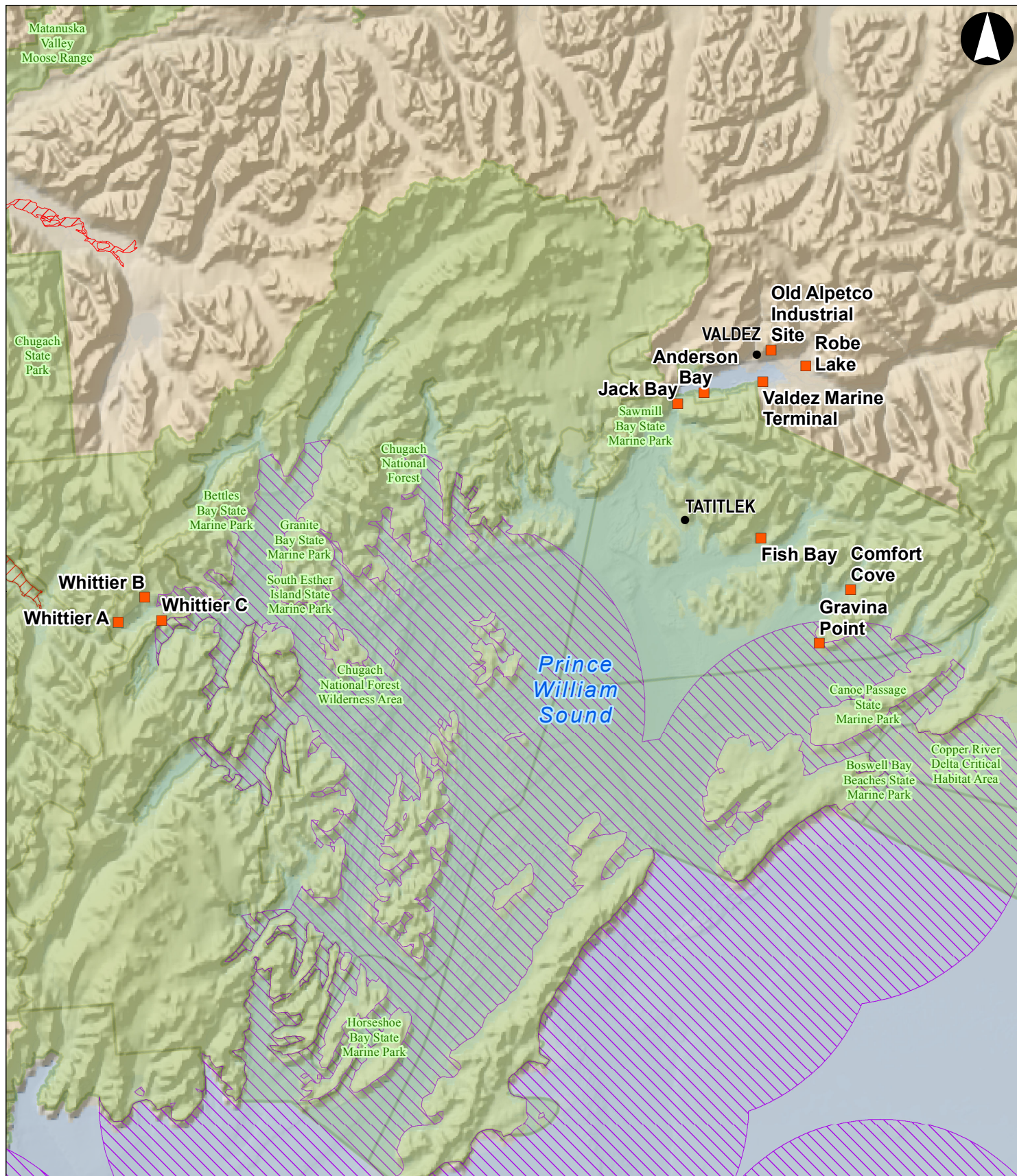
PREPARED BY:	EXP ENERGY SERVICES INC.
SCALE:	1:1,000,000
DATE:	2016-01-23
SHEET:	B-02

POTENTIAL LIQUEFACTION FACILITY SITING LOCATIONS - OVERVIEW

B-02 LOWER KENAI PENINSULA

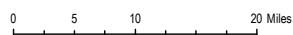
ALASKA LNG

Liquefaction Facility Siting Analysis Overview Maps - Prince William Sound



LEGEND

- Potential LNG Siting Locations
- Alaska Place Names
- State & Federal Conservation Lands
- Beluga Whales Critical Habitat Area 1
- Critical Habitat (USFWS)
- Steller Sea Lion



DISCLAIMER

The information contained herein is for informational or planning purposes only. It does not nor should it be deemed to be an offer, request or proposals for rights or occupation of any kind. The Alaska LNG Project Participants and their respective officers, employees and agents, make no warranty, implied or otherwise, nor accept any liability, as to the accuracy or completeness of the information contained in these documents, drawings or electronic files. Do not remove or delete this note from document, drawing or electronic file.

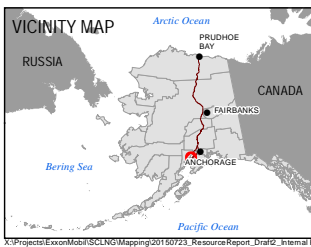
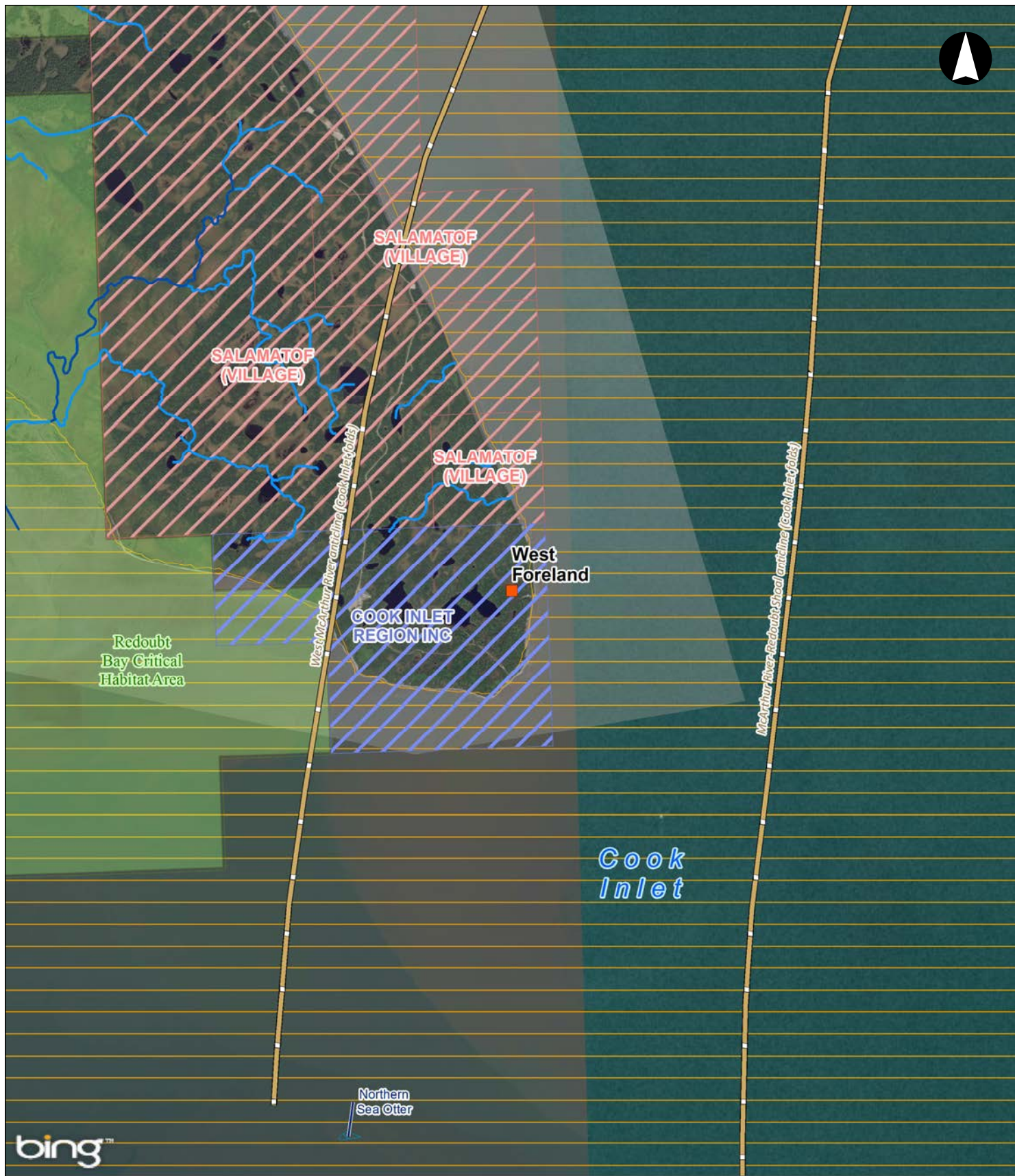
PREPARED BY:	EXP ENERGY SERVICES INC.
SCALE:	1:1,000,000
DATE:	2016-01-23
SHEET:	B-03

POTENTIAL LIQUEFACTION FACILITY SITING LOCATIONS - OVERVIEW

B-03 PRINCE WILLIAM SOUND

ALASKA LNG

Liquefaction Facility Siting Analysis Figures – All Sites



- LEGEND**
- Potential Liquefaction Facility Location
 - Fault Lines
 - State & Federal Conservation Lands
 - Anadromous Streams
 - Streams
 - ▨ Native Village or Region Lands
 - ▨ Native Village Lands
 - ▨ Beluga Area
 - ▨ Northern Sea Otter

0 0.25 0.5 1 Miles

DISCLAIMER

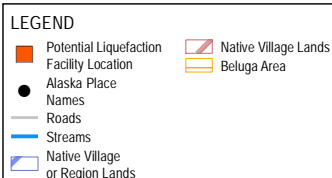
The information contained herein is for informational or planning purposes only. It does not nor should it be deemed to be an offer, request or proposals for rights or occupation of any kind. The Alaska LNG Project Participants and their respective officers, employees and agents, make no warranty, implied or otherwise, nor accept any liability, as to the accuracy or completeness of the information contained in these documents, drawings or electronic files. Do not remove or delete this note from document, drawing or electronic file.

PREPARED BY:	EXP ENERGY SERVICES INC.
SCALE:	1:75,000
DATE:	2016-01-23
SHEET:	B-04

**POTENTIAL LIQUEFACTION
FACILITY SITING
LOCATIONS**

B-04 WEST FORELAND

ALASKA LNG



DISCLAIMER

The information contained herein is for informational or planning purposes only. It does not nor should it be deemed to be an offer, request or proposals for rights or occupation of any kind. The Alaska LNG Project Participants and their respective officers, employees and agents, make no warranty, implied or otherwise, nor accept any liability, as to the accuracy or completeness of the information contained in these documents, drawings or electronic files. Do not remove or delete this note from document, drawing or electronic file.

PREPARED BY:	EXP ENERGY SERVICES INC.
SCALE:	1:50,000
DATE:	2016-01-23
SHEET:	B-06

POTENTIAL LIQUEFACTION FACILITY SITING LOCATIONS

B-06 NIKISKI (SITE A)

ALASKA LNG



LEGEND

- Potential Liquefaction Facility Location
- State & Federal Conservation Lands
- Anadromous Streams
- Streams
- Beluga Area

0 0.325 0.65 1.3 Miles

DISCLAIMER

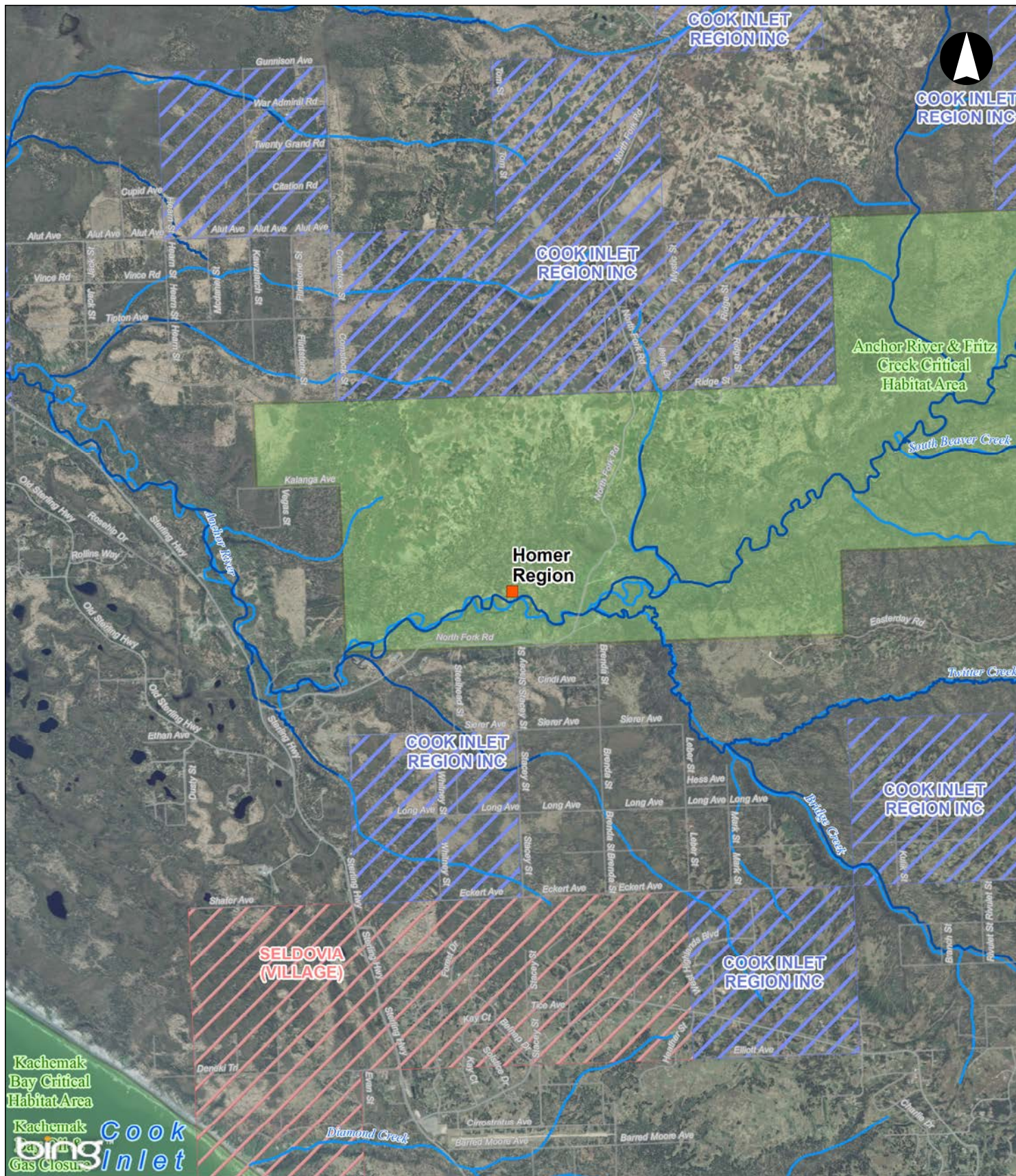
The information contained herein is for informational or planning purposes only. It does not nor should it be deemed to be an offer, request or proposals for rights or occupation of any kind. The Alaska LNG Project Participants and their respective officers, employees and agents, make no warranty, implied or otherwise, nor accept any liability, as to the accuracy or completeness of the information contained in these documents, drawings or electronic files. Do not remove or delete this note from document, drawing or electronic file.

PREPARED BY:	EXP ENERGY SERVICES INC.
SCALE:	1:100,000
DATE:	2016-01-23
SHEET:	B-07

POTENTIAL LIQUEFACTION FACILITY SITING LOCATIONS

B-07 KALGIN ISLAND

ALASKA LNG



- LEGEND**
- Potential Liquefaction Facility Location
 - Roads
 - State & Federal Conservation Lands
 - Anadromous Streams
 - Streams
 - ▨ Native Village or Region Lands
 - ▨ Native Village Lands

0 0.15 0.3 0.6 Miles

DISCLAIMER

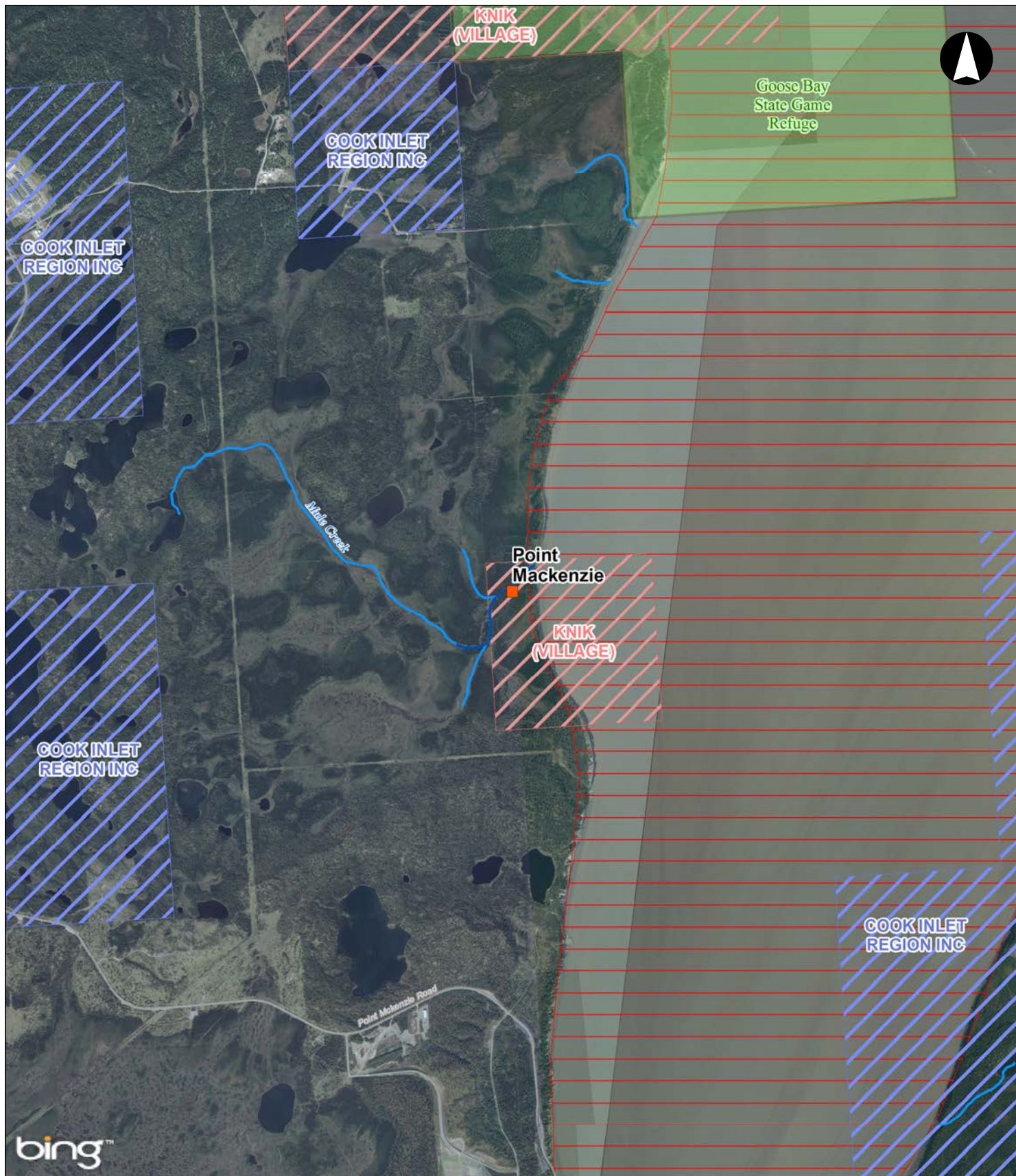
The information contained herein is for informational or planning purposes only. It does not nor should it be deemed to be an offer, request or proposals for rights or occupation of any kind. The Alaska LNG Project Participants and their respective officers, employees and agents, make no warranty, implied or otherwise, nor accept any liability, as to the accuracy or completeness of the information contained in these documents, drawings or electronic files. Do not remove or delete this note from document, drawing or electronic file.

PREPARED BY: EXP ENERGY SERVICES INC.
 SCALE: 1:50,000
 DATE: 2016-01-23 SHEET: B-08

**POTENTIAL LIQUEFACTION
 FACILITY SITING
 LOCATIONS**

B-08 HOMER REGION

ALASKA LNG



LEGEND

- Potential Liquefaction Facility Location
- Roads
- State & Federal Conservation Lands
- Anadromous Streams
- Streams
- ▨ Native Village or Region Lands
- ▨ Native Village Lands
- ▨ Beluga Area

0 0.15 0.3 0.6 Miles

DISCLAIMER

The information contained herein is for informational or planning purposes only. It does not nor should it be deemed to be an offer, request or proposals for rights or occupation of any kind. The Alaska LNG Project Participants and their respective officers, employees and agents, make no warranty, implied or otherwise, nor accept any liability, as to the accuracy or completeness of the information contained in these documents, drawings or electronic files. Do not remove or delete this note from document, drawing or electronic file.

PREPARED BY:	EXP ENERGY SERVICES INC.
SCALE:	1:50,000
DATE:	2016-01-23
SHEET:	B-09

POTENTIAL LIQUEFACTION FACILITY SITING LOCATIONS

B-09 POINT MACKENZIE

ALASKA LNG



LEGEND

- Potential Liquefaction Facility Location
- Alaska Place Names
- Roads
- State & Federal Conservation Lands
- Anadromous Streams
- Streams
- ▨ Native Village Lands

0 0.15 0.3 0.6 Miles

DISCLAIMER

The information contained herein is for informational or planning purposes only. It does not nor should it be deemed to be an offer, request or proposals for rights or occupation of any kind. The Alaska LNG Project Participants and their respective officers, employees and agents, make no warranty, implied or otherwise, nor accept any liability, as to the accuracy or completeness of the information contained in these documents, drawings or electronic files. Do not remove or delete this note from document, drawing or electronic file.

PREPARED BY:	EXP ENERGY SERVICES INC.
SCALE:	1:50,000
DATE:	2016-01-23
SHEET:	B-10

POTENTIAL LIQUEFACTION FACILITY SITING LOCATIONS

B-10 VALDEZ MARINE TERMINAL

ALASKA LNG



- LEGEND**
- Potential Liquefaction Facility Location
 - ▬ Native Village or Region Lands
 - ▬ Fault Lines
 - ▬ Native Village Lands
 - ▬ State & Federal Conservation Lands
 - ▬ Anadromous Streams
 - ▬ Streams

0 0.325 0.65 1.3 Miles

DISCLAIMER

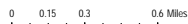
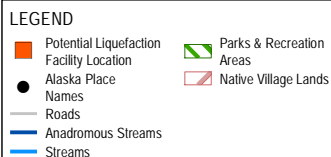
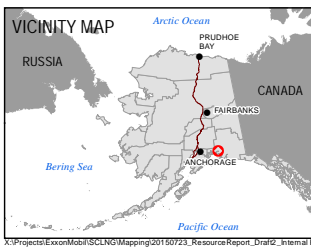
The information contained herein is for informational or planning purposes only. It does not nor should it be deemed to be an offer, request or proposals for rights or occupation of any kind. The Alaska LNG Project Participants and their respective officers, employees and agents, make no warranty, implied or otherwise, nor accept any liability, as to the accuracy or completeness of the information contained in these documents, drawings or electronic files. Do not remove or delete this note from document, drawing or electronic file.

PREPARED BY: EXP ENERGY SERVICES INC.
 SCALE: 1:100,000
 DATE: 2016-01-23 SHEET: B-11

**POTENTIAL LIQUEFACTION
 FACILITY SITING
 LOCATIONS**

B-11 GRAVINA POINT

ALASKA LNG



DISCLAIMER

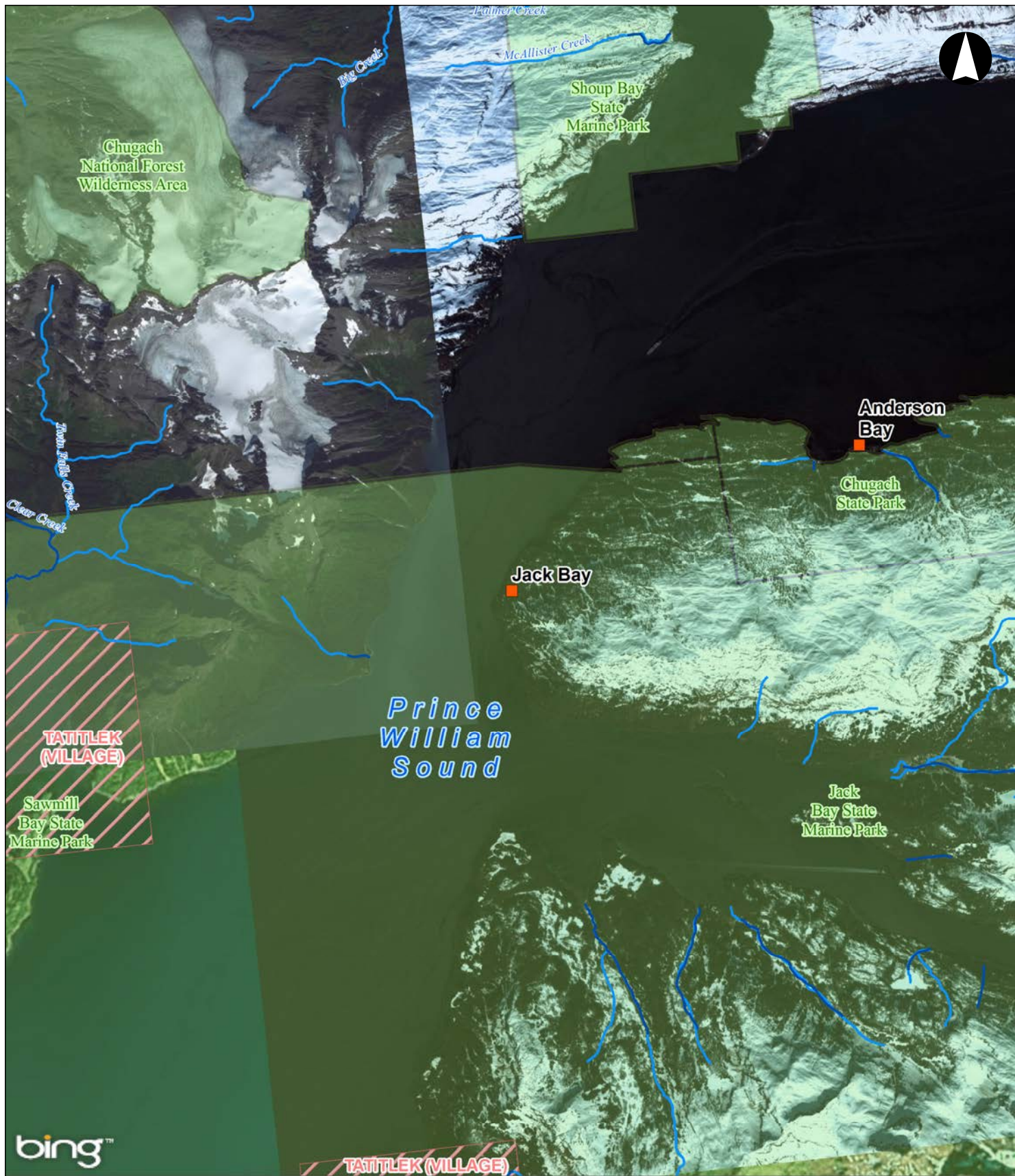
The information contained herein is for informational or planning purposes only. It does not nor should it be deemed to be an offer, request or proposals for rights or occupation of any kind. The Alaska LNG Project Participants and their respective officers, employees and agents, make no warranty, implied or otherwise, nor accept any liability, as to the accuracy or completeness of the information contained in these documents, drawings or electronic files. Do not remove or delete this note from document, drawing or electronic file.

PREPARED BY:	EXP ENERGY SERVICES INC.
SCALE:	1:50,000
DATE:	2016-01-23
SHEET:	B-12

**POTENTIAL LIQUEFACTION
FACILITY SITING
LOCATIONS**

B-12 OLD ALPETCO INDUSTRIAL SITE

ALASKA LNG



- LEGEND**
- Potential Liquefaction Facility Location
 - State & Federal Conservation Lands
 - Anadromous Streams
 - Streams
 - Native Village Lands

0 0.25 0.5 1 Miles

DISCLAIMER

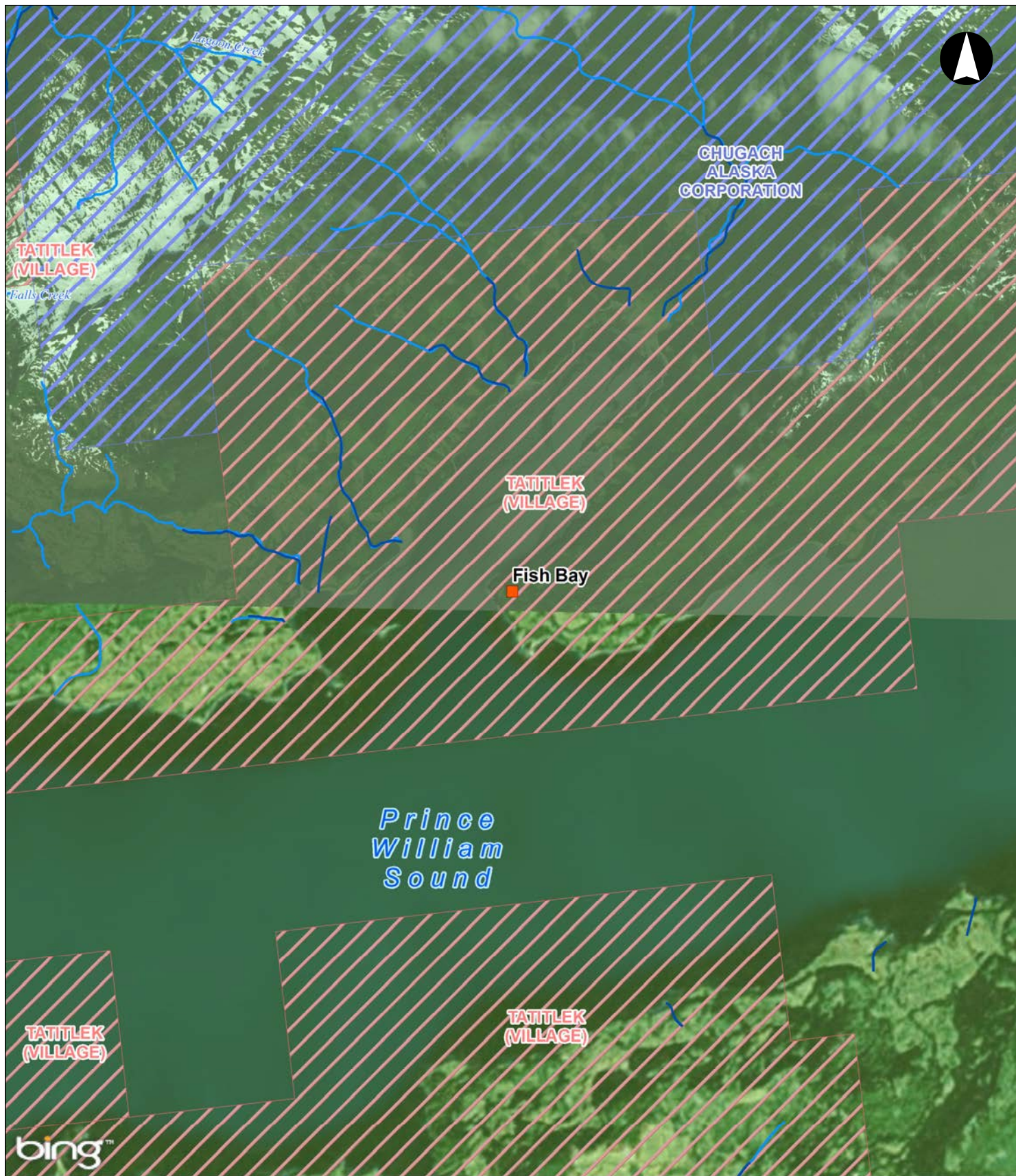
The information contained herein is for informational or planning purposes only. It does not nor should it be deemed to be an offer, request or proposals for rights or occupation of any kind. The Alaska LNG Project Participants and their respective officers, employees and agents, make no warranty, implied or otherwise, nor accept any liability, as to the accuracy or completeness of the information contained in these documents, drawings or electronic files. Do not remove or delete this note from document, drawing or electronic file.

PREPARED BY:	EXP ENERGY SERVICES INC.
SCALE:	1:75,000
DATE:	2016-01-23
SHEET:	B-13

**POTENTIAL LIQUEFACTION
FACILITY SITING
LOCATIONS**

B-13 JACK BAY

ALASKA LNG



LEGEND

- Potential Liquefaction Facility Location
- State & Federal Conservation Lands
- Anadromous Streams
- Streams
- ▭ Native Village or Region Lands
- ▭ Native Village Lands

0 0.15 0.3 0.6 Miles

DISCLAIMER

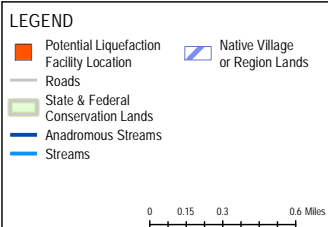
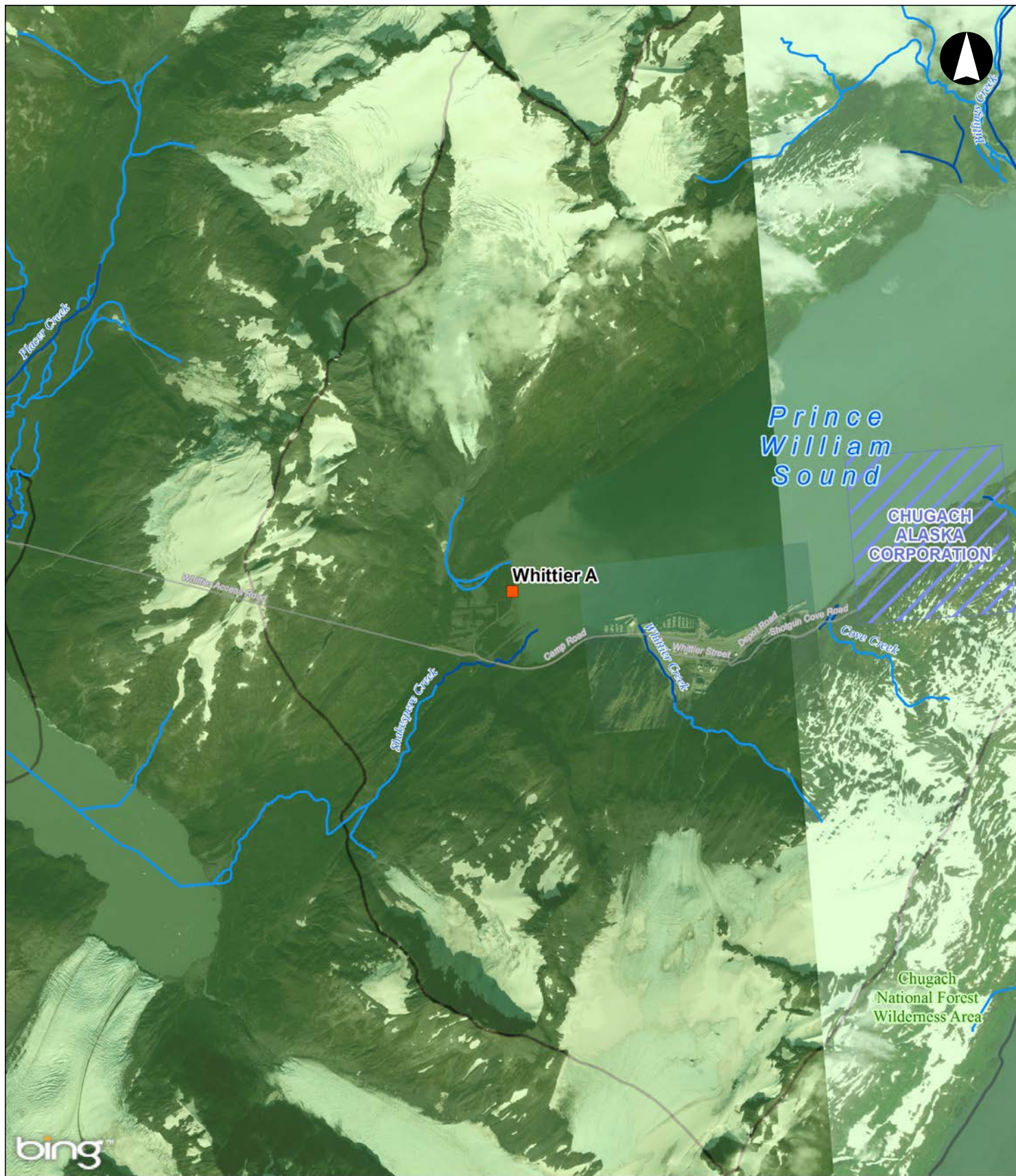
The information contained herein is for informational or planning purposes only. It does not nor should it be deemed to be an offer, request or proposals for rights or occupation of any kind. The Alaska LNG Project Participants and their respective officers, employees and agents, make no warranty, implied or otherwise, nor accept any liability, as to the accuracy or completeness of the information contained in these documents, drawings or electronic files. Do not remove or delete this note from document, drawing or electronic file.

PREPARED BY:	EXP ENERGY SERVICES INC.
SCALE:	1:50,000
DATE:	2016-01-23
SHEET:	B-14

POTENTIAL LIQUEFACTION FACILITY SITING LOCATIONS

B-14 FISH BAY

ALASKA LNG



DISCLAIMER

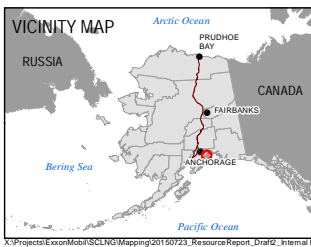
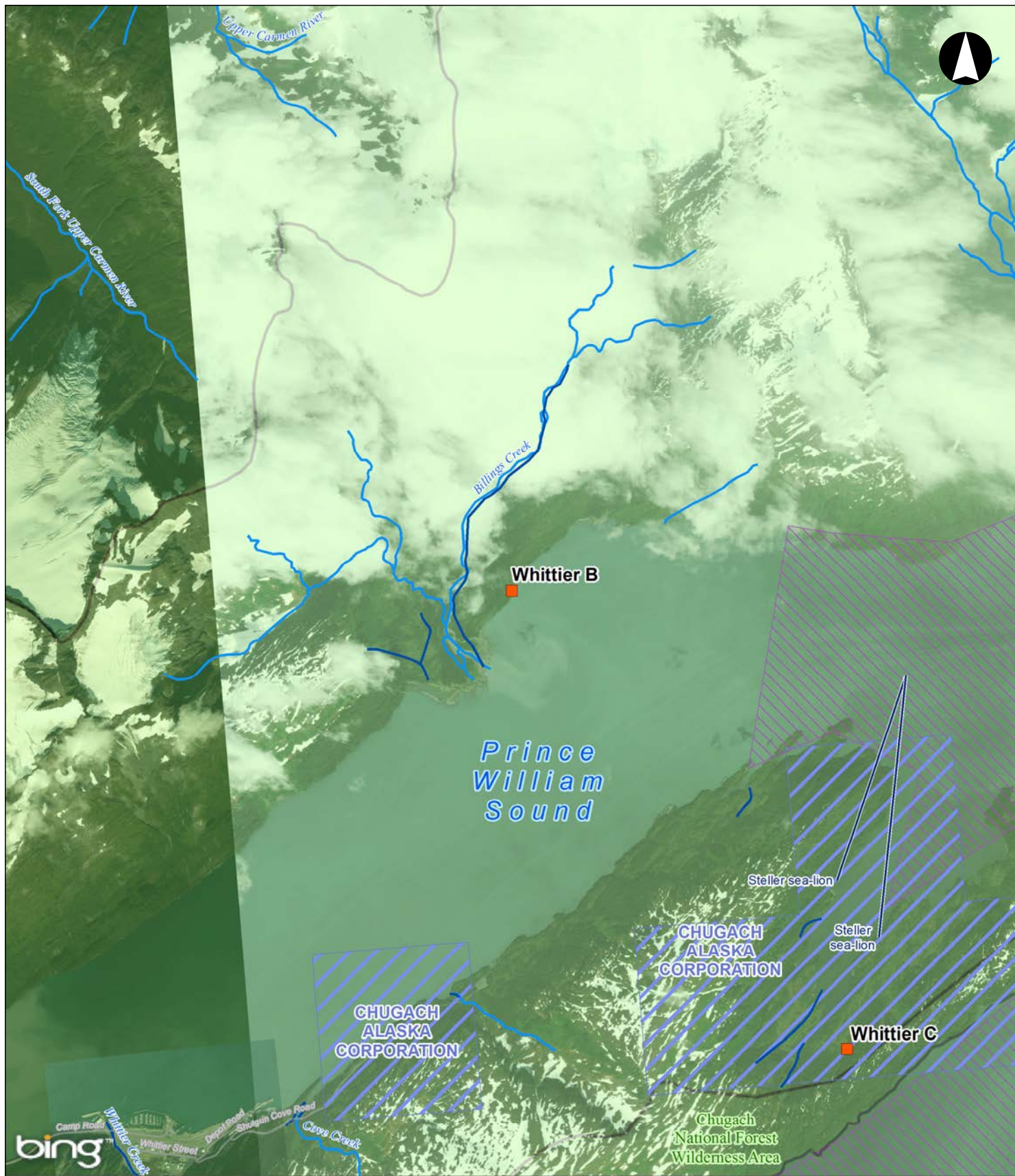
The information contained herein is for informational or planning purposes only. It does not nor should it be deemed to be an offer, request or proposals for rights or occupation of any kind. The Alaska LNG Project Participants and their respective officers, employees and agents, make no warranty, implied or otherwise, nor accept any liability, as to the accuracy or completeness of the information contained in these documents, drawings or electronic files. Do not remove or delete this note from document, drawing or electronic file.

PREPARED BY:	EXP ENERGY SERVICES INC.
SCALE:	1:50,000
DATE:	2016-01-23
SHEET:	B-15

POTENTIAL LIQUEFACTION FACILITY SITING LOCATIONS

B-15 WHITTIER A

ALASKA LNG



- LEGEND**
- Potential Liquefaction Facility Location
 - Roads
 - State & Federal Conservation Lands
 - Anadromous Streams
 - Streams
 - ▨ Native Village or Region Lands

0 0.15 0.3 0.6 Miles

DISCLAIMER

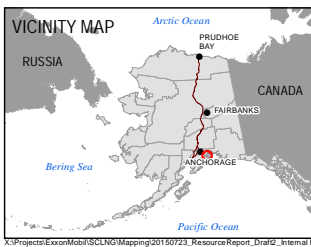
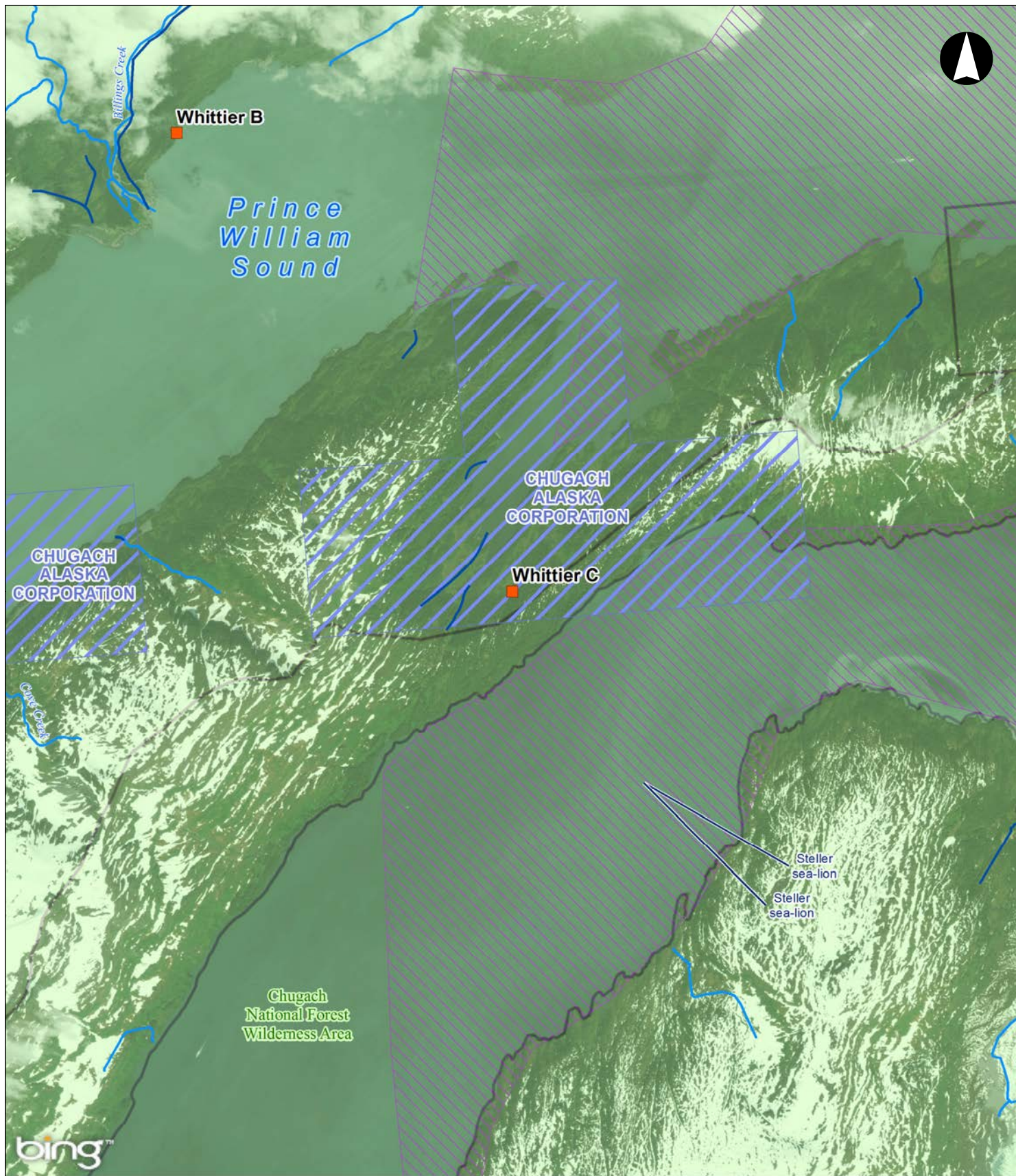
The information contained herein is for informational or planning purposes only. It does not nor should it be deemed to be an offer, request or proposals for rights or occupation of any kind. The Alaska LNG Project Participants and their respective officers, employees and agents, make no warranty, implied or otherwise, nor accept any liability, as to the accuracy or completeness of the information contained in these documents, drawings or electronic files. Do not remove or delete this note from document, drawing or electronic file.

PREPARED BY: EXP ENERGY SERVICES INC.
 SCALE: 1:50,000
 DATE: 2016-01-23 SHEET: B-16

**POTENTIAL LIQUEFACTION
 FACILITY SITING
 LOCATIONS**

B-16 WHITTIER B

ALASKA LNG



LEGEND

- Potential Liquefaction Facility Location
- State & Federal Conservation Lands
- Anadromous Streams
- Streams
- Native Village or Region Lands

0 0.15 0.3 0.6 Miles

DISCLAIMER

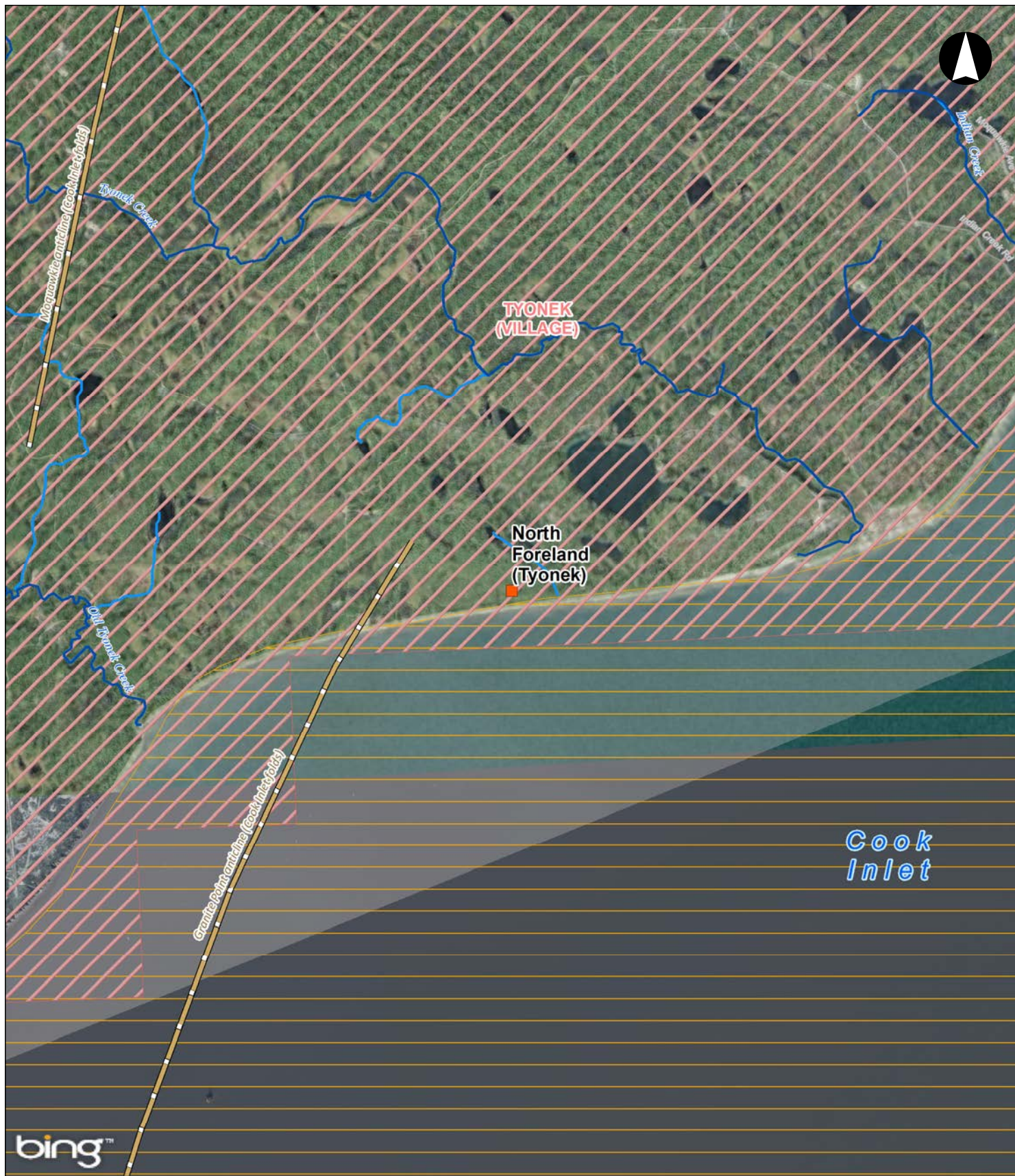
The information contained herein is for informational or planning purposes only. It does not nor should it be deemed to be an offer, request or proposals for rights or occupation of any kind. The Alaska LNG Project Participants and their respective officers, employees and agents, make no warranty, implied or otherwise, nor accept any liability, as to the accuracy or completeness of the information contained in these documents, drawings or electronic files. Do not remove or delete this note from document, drawing or electronic file.

PREPARED BY:	EXP ENERGY SERVICES INC.
SCALE:	1:50,000
DATE:	2016-01-23
SHEET:	B-17

POTENTIAL LIQUEFACTION FACILITY SITING LOCATIONS

B-17 WHITTIER C

ALASKA LNG



LEGEND

- Potential Liquefaction Facility Location
- Roads
- Fault Lines
- Anadromous Streams
- Streams
- ▨ Native Village Lands
- ▨ Beluga Area

0 0.15 0.3 0.6 Miles

DISCLAIMER

The information contained herein is for informational or planning purposes only. It does not nor should it be deemed to be an offer, request or proposals for rights or occupation of any kind. The Alaska LNG Project Participants and their respective officers, employees and agents, make no warranty, implied or otherwise, nor accept any liability, as to the accuracy or completeness of the information contained in these documents, drawings or electronic files. Do not remove or delete this note from document, drawing or electronic file.

PREPARED BY:	EXP ENERGY SERVICES INC.
SCALE:	1:50,000
DATE:	2016-01-23
SHEET:	B-18

POTENTIAL LIQUEFACTION FACILITY SITING LOCATIONS

B-18 NORTH FORELAND (TYONEK)

ALASKA LNG



LEGEND

- Potential Liquefaction Facility Location
- Anadromous Streams
- Streams
- ▭ Native Village or Region Lands
- ▭ Native Village Lands
- ▭ Beluga Area

0 0.15 0.3 0.6 Miles

DISCLAIMER

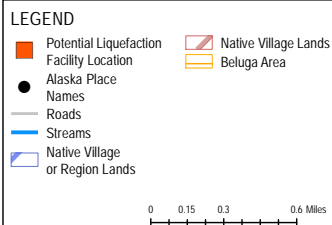
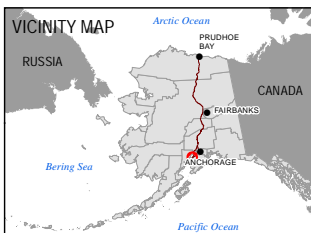
The information contained herein is for informational or planning purposes only. It does not nor should it be deemed to be an offer, request or proposals for rights or occupation of any kind. The Alaska LNG Project Participants and their respective officers, employees and agents, make no warranty, implied or otherwise, nor accept any liability, as to the accuracy or completeness of the information contained in these documents, drawings or electronic files. Do not remove or delete this note from document, drawing or electronic file.

PREPARED BY:	EXP ENERGY SERVICES INC.
SCALE:	1:50,000
DATE:	2016-01-23
SHEET:	B-19

POTENTIAL LIQUEFACTION FACILITY SITING LOCATIONS

B-19 HARRIET POINT

ALASKA LNG



DISCLAIMER

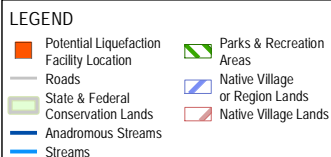
The information contained herein is for informational or planning purposes only. It does not nor should it be deemed to be an offer, request or proposals for rights or occupation of any kind. The Alaska LNG Project Participants and their respective officers, employees and agents, make no warranty, implied or otherwise, nor accept any liability, as to the accuracy or completeness of the information contained in these documents, drawings or electronic files. Do not remove or delete this note from document, drawing or electronic file.

PREPARED BY:	EXP ENERGY SERVICES INC.
SCALE:	1:50,000
DATE:	2016-01-23
SHEET:	B-20

POTENTIAL LIQUEFACTION FACILITY SITING LOCATIONS

B-20 NIKISKI NORTH

ALASKA LNG



DISCLAIMER

The information contained herein is for informational or planning purposes only. It does not nor should it be deemed to be an offer, request or proposals for rights or occupation of any kind. The Alaska LNG Project Participants and their respective officers, employees and agents, make no warranty, implied or otherwise, nor accept any liability, as to the accuracy or completeness of the information contained in these documents, drawings or electronic files. Do not remove or delete this note from document, drawing or electronic file.

PREPARED BY:	EXP ENERGY SERVICES INC.
SCALE:	1:150,000
DATE:	2016-01-23
SHEET:	B-21

**POTENTIAL LIQUEFACTION
FACILITY SITING
LOCATIONS**

B-21 CAPE STARICHKOF

ALASKA LNG



- LEGEND**
- Potential Liquefaction Facility Location
 - State & Federal Conservation Lands
 - Anadromous Streams
 - Streams

0 0.075 0.15 0.3 Miles

DISCLAIMER

The information contained herein is for informational or planning purposes only. It does not nor should it be deemed to be an offer, request or proposals for rights or occupation of any kind. The Alaska LNG Project Participants and their respective officers, employees and agents, make no warranty, implied or otherwise, nor accept any liability, as to the accuracy or completeness of the information contained in these documents, drawings or electronic files. Do not remove or delete this note from document, drawing or electronic file.

PREPARED BY:	EXP ENERGY SERVICES INC.
SCALE:	1:25,000
DATE:	2016-01-23
SHEET:	B-22

**POTENTIAL LIQUEFACTION
FACILITY SITING
LOCATIONS**

B-22 ANDERSON BAY

ALASKA LNG



LEGEND

- Potential Liquefaction Facility Location
- Roads
- Anadromous Streams
- Streams
- ▨ Parks & Recreation Areas
- ▨ Native Village Lands

0 0.15 0.3 0.6 Miles

DISCLAIMER

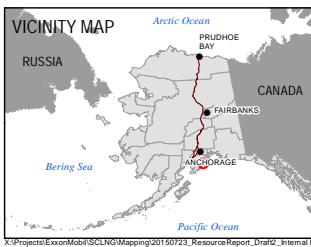
The information contained herein is for informational or planning purposes only. It does not nor should it be deemed to be an offer, request or proposals for rights or occupation of any kind. The Alaska LNG Project Participants and their respective officers, employees and agents, make no warranty, implied or otherwise, nor accept any liability, as to the accuracy or completeness of the information contained in these documents, drawings or electronic files. Do not remove or delete this note from document, drawing or electronic file.

PREPARED BY:	EXP ENERGY SERVICES INC.
SCALE:	1:50,000
DATE:	2016-01-23 SHEET: B-23

POTENTIAL LIQUEFACTION FACILITY SITING LOCATIONS

B-23 ROBE LAKE

ALASKA LNG



LEGEND

- Potential Liquefaction Facility Location
- Alaska Place Names
- Ⓜ Prison
- Roads
- State & Federal Conservation Lands
- Anadromous Streams
- Streams
- Parks & Recreation Areas
- State Special Use Lands
- Native Village or Region Lands

0 0.15 0.3 0.6 Miles

DISCLAIMER

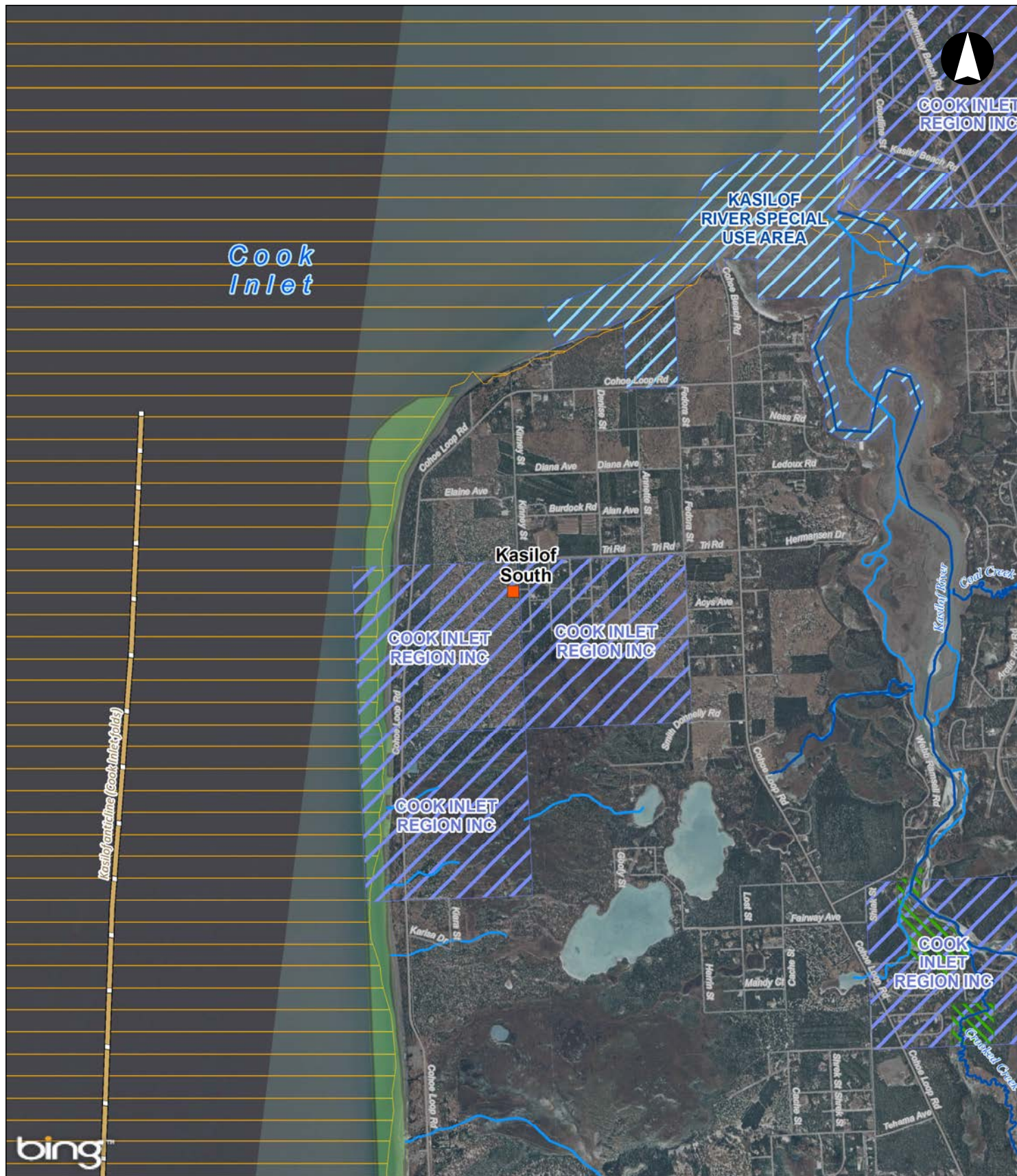
The information contained herein is for informational or planning purposes only. It does not nor should it be deemed to be an offer, request or proposals for rights or occupation of any kind. The Alaska LNG Project Participants and their respective officers, employees and agents, make no warranty, implied or otherwise, nor accept any liability, as to the accuracy or completeness of the information contained in these documents, drawings or electronic files. Do not remove or delete this note from document, drawing or electronic file.

PREPARED BY:	EXP ENERGY SERVICES INC.
SCALE:	1:50,000
DATE:	2016-01-23
SHEET:	B-24

POTENTIAL LIQUEFACTION FACILITY SITING LOCATIONS

B-24 SEWARD

ALASKA LNG



DISCLAIMER

The information contained herein is for informational or planning purposes only. It does not nor should it be deemed to be an offer, request or proposals for rights or occupation of any kind. The Alaska LNG Project Participants and their respective officers, employees and agents, make no warranty, implied or otherwise, nor accept any liability, as to the accuracy or completeness of the information contained in these documents, drawings or electronic files. Do not remove or delete this note from document, drawing or electronic file.

PREPARED BY:	EXP ENERGY SERVICES INC.
SCALE:	1:50,000
DATE:	2016-01-23
SHEET:	B-25

**POTENTIAL LIQUEFACTION
FACILITY SITING
LOCATIONS**

B-25 KASILOF SOUTH

ALASKA LNG



LEGEND

- Potential Liquefaction Facility Location
- Parks & Recreation Areas
- Native Village or Region Lands
- State & Federal Conservation Lands
- Anadromous Streams
- Streams
- Native Village Lands

0 0.15 0.3 0.6 Miles

DISCLAIMER

The information contained herein is for informational or planning purposes only. It does not nor should it be deemed to be an offer, request or proposals for rights or occupation of any kind. The Alaska LNG Project Participants and their respective officers, employees and agents, make no warranty, implied or otherwise, nor accept any liability, as to the accuracy or completeness of the information contained in these documents, drawings or electronic files. Do not remove or delete this note from document, drawing or electronic file.

PREPARED BY:	EXP ENERGY SERVICES INC.
SCALE:	1:50,000
DATE:	2016-01-23
SHEET:	B-26

POTENTIAL LIQUEFACTION FACILITY SITING LOCATIONS

B-26 NINILCHIK SOUTH

ALASKA LNG



LEGEND

- Potential Liquefaction Facility Location
- State & Federal Conservation Lands
- Anadromous Streams
- Streams
- Native Village or Region Lands

0 0.15 0.3 0.6 Miles

DISCLAIMER

The information contained herein is for informational or planning purposes only. It does not nor should it be deemed to be an offer, request or proposals for rights or occupation of any kind. The Alaska LNG Project Participants and their respective officers, employees and agents, make no warranty, implied or otherwise, nor accept any liability, as to the accuracy or completeness of the information contained in these documents, drawings or electronic files. Do not remove or delete this note from document, drawing or electronic file.

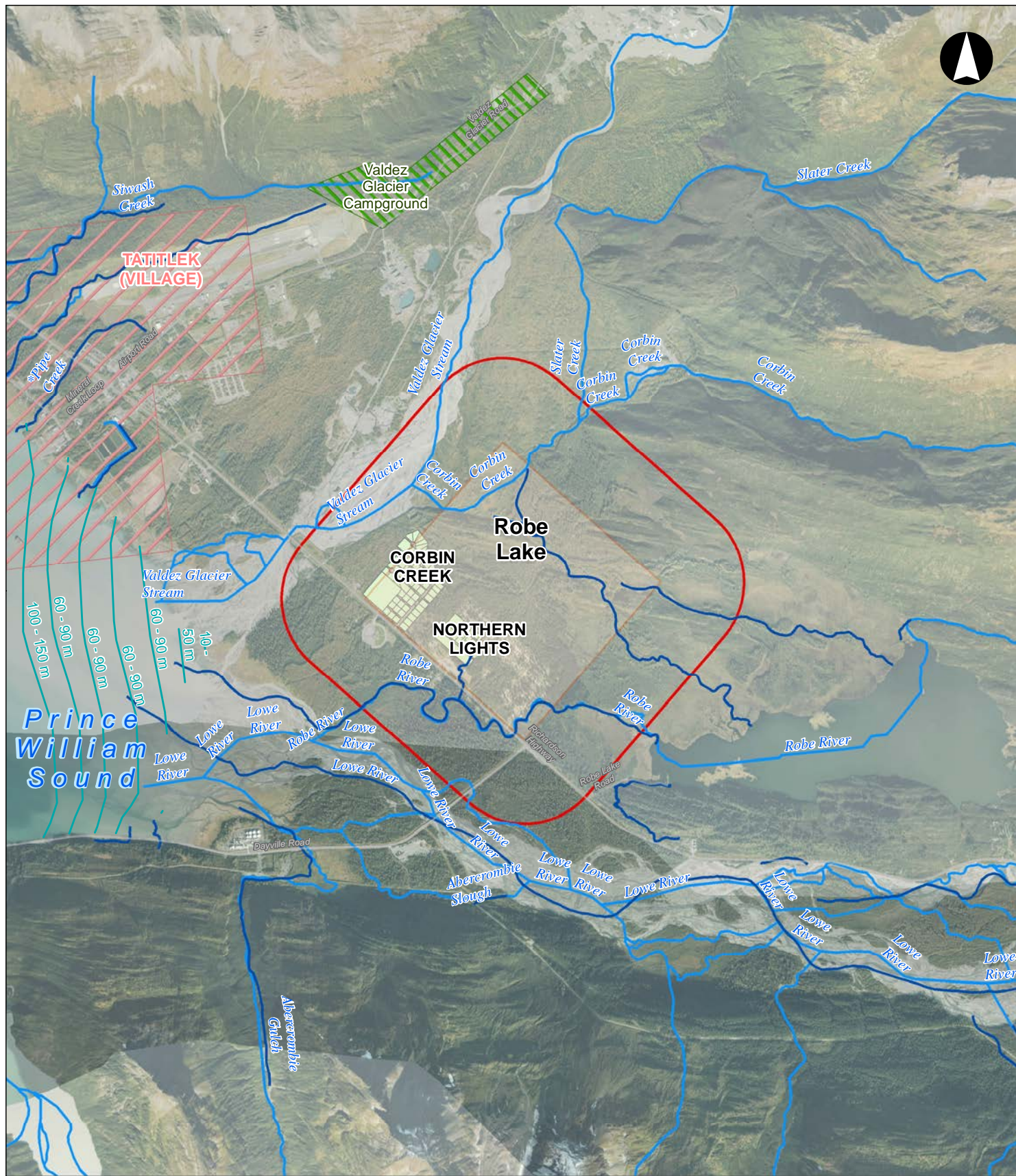
PREPARED BY:	EXP ENERGY SERVICES INC.
SCALE:	1:50,000
DATE:	2016-01-23
SHEET:	B-27

POTENTIAL LIQUEFACTION FACILITY SITING LOCATIONS

B-27 COMFORT COVE

ALASKA LNG

Liquefaction Facility Siting Analysis Figures – Sites Selected for Further Evaluation



LEGEND			
Bathymetry (Depth)	Anadromous Streams	Site Boundary (0.5 Mile Buffer)	Parks & Recreation Areas
Roads	Streams	Subdivisions	Native Village Lands
	Site Boundary		

0 0.25 0.5 1 Miles

DISCLAIMER

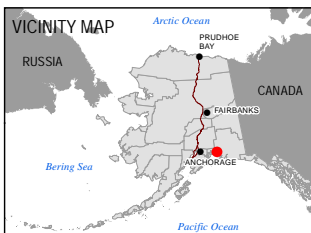
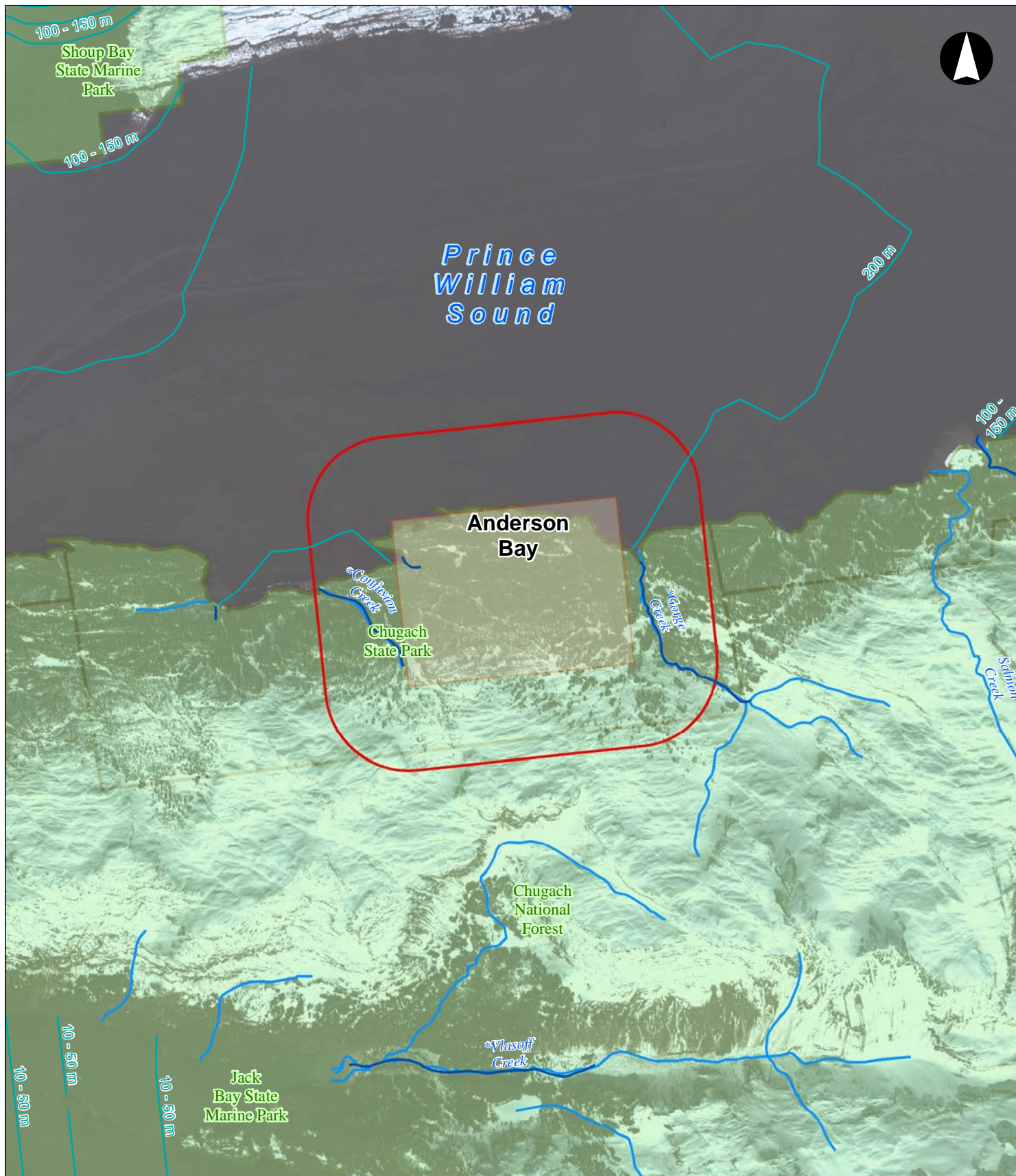
The information contained herein is for informational or planning purposes only. It does not nor should it be deemed to be an offer, request or proposals for rights or occupation of any kind. The Alaska LNG Project Participants and their respective officers, employees and agents, make no warranty, implied or otherwise, nor accept any liability, as to the accuracy or completeness of the information contained in these documents, drawings or electronic files. Do not remove or delete this note from document, drawing or electronic file.

PREPARED BY:	EXP ENERGY SERVICES INC.
SCALE:	1:50,000
DATE:	2016-01-23
SHEET:	B-29

POTENTIAL LIQUEFACTION FACILITY SITING LOCATIONS

B-29 ROBE LAKE

ALASKA LNG



LEGEND		
	Bathymetry (Depth)	Site Boundary
	Anadromous Streams	Site Boundary (0.5 Mile Buffer)
	Streams	State & Federal Conservation Lands

0 0.25 0.5 1 Miles

DISCLAIMER

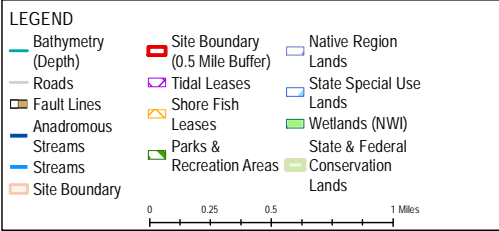
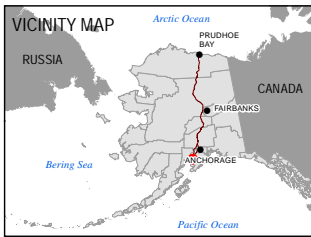
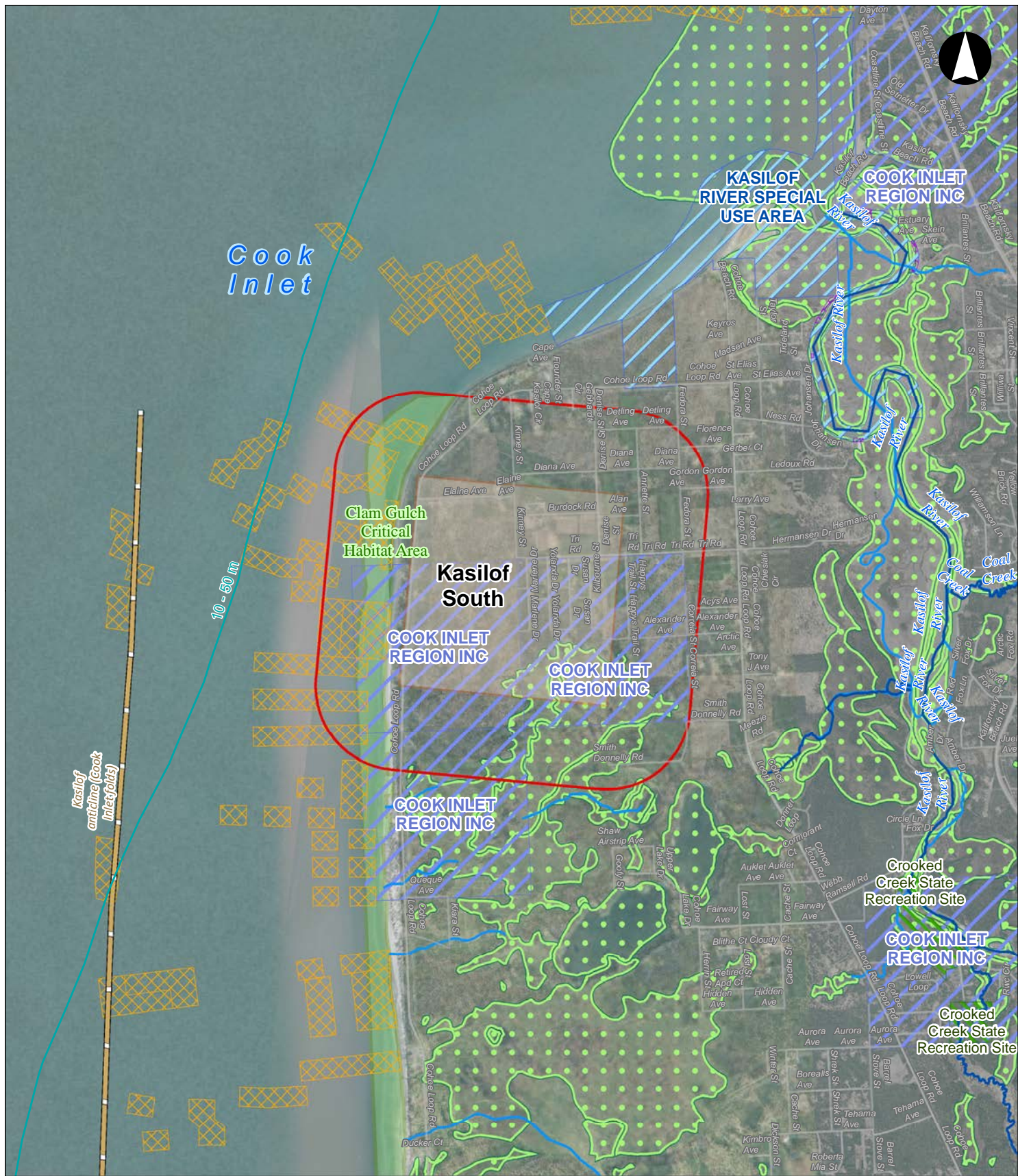
The information contained herein is for informational or planning purposes only. It does not nor should it be deemed to be an offer, request or proposals for rights or occupation of any kind. The Alaska LNG Project Participants and their respective officers, employees and agents, make no warranty, implied or otherwise, nor accept any liability, as to the accuracy or completeness of the information contained in these documents, drawings or electronic files. Do not remove or delete this note from document, drawing or electronic file.

PREPARED BY:	EXP ENERGY SERVICES INC.
SCALE:	1:50,000
DATE:	2016-01-23
SHEET:	B-30

POTENTIAL LIQUEFACTION FACILITY SITING LOCATIONS

B-30 ANDERSON BAY

ALASKA LNG



DISCLAIMER

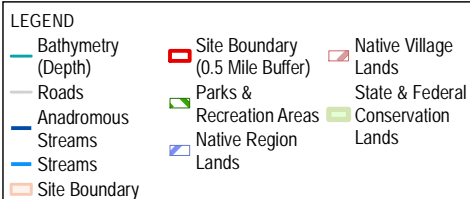
The information contained herein is for informational or planning purposes only. It does not nor should it be deemed to be an offer, request or proposals for rights or occupation of any kind. The Alaska LNG Project Participants and their respective officers, employees and agents, make no warranty, implied or otherwise, nor accept any liability, as to the accuracy or completeness of the information contained in these documents, drawings or electronic files. Do not remove or delete this note from document, drawing or electronic file.

PREPARED BY:	EXP ENERGY SERVICES INC.
SCALE:	1:50,000
DATE:	2016-01-23
SHEET:	B-31

POTENTIAL LIQUEFACTION FACILITY SITING LOCATIONS

B-31 KASILOF SOUTH

ALASKA LNG



DISCLAIMER

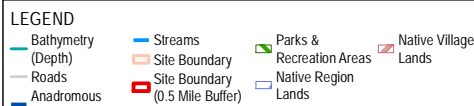
The information contained herein is for informational or planning purposes only. It does not nor should it be deemed to be an offer, request or proposals for rights or occupation of any kind. The Alaska LNG Project Participants and their respective officers, employees and agents, make no warranty, implied or otherwise, nor accept any liability, as to the accuracy or completeness of the information contained in these documents, drawings or electronic files. Do not remove or delete this note from document, drawing or electronic file.

PREPARED BY:	EXP ENERGY SERVICES INC.
SCALE:	1:50,000
DATE:	2016-01-23
SHEET:	B-32

POTENTIAL LIQUEFACTION FACILITY SITING LOCATIONS

B-32 NINILCHIK SOUTH

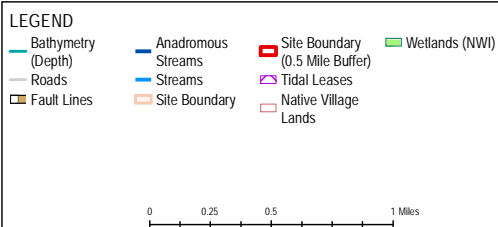
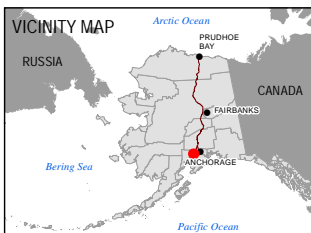
ALASKA LNG



The information contained herein is for informational or planning purposes only. It does not nor should it be deemed to be an offer, request or proposals for rights or occupation of any kind. The Alaska LNG Project Participants and their respective officers, employees and agents, make no warranty, implied or otherwise, nor accept any liability, as to the accuracy or completeness of the information contained in these documents, drawings or electronic files. Do not remove or delete this note from document, drawing or electronic file.

B-33 CAPE STARICHKOF

ALASKA LNG



DISCLAIMER

The information contained herein is for informational or planning purposes only. It does not nor should it be deemed to be an offer, request or proposals for rights or occupation of any kind. The Alaska LNG Project Participants and their respective officers, employees and agents, make no warranty, implied or otherwise, nor accept any liability, as to the accuracy or completeness of the information contained in these documents, drawings or electronic files. Do not remove or delete this note from document, drawing or electronic file.

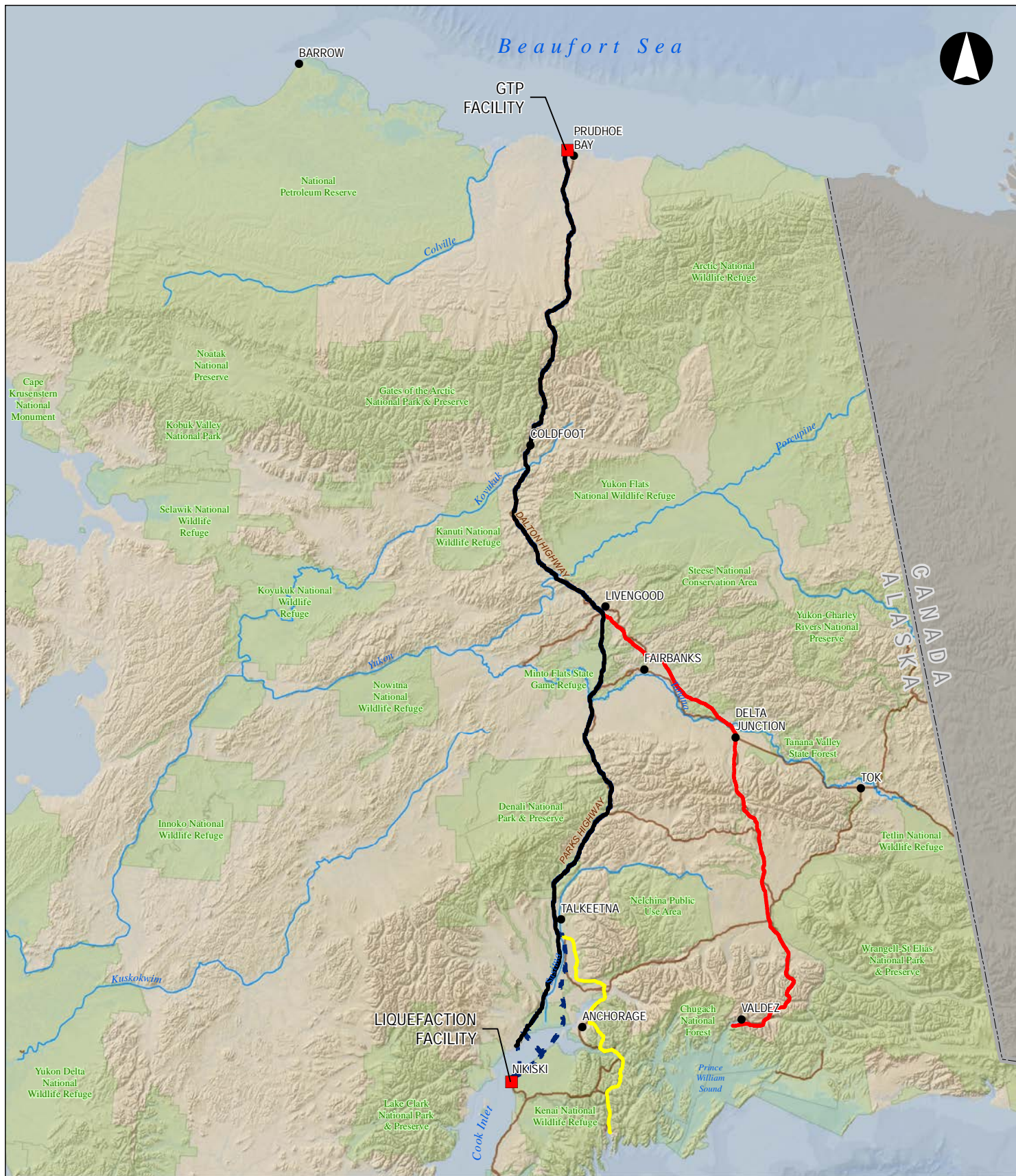
PREPARED BY:	EXP ENERGY SERVICES INC.
SCALE:	1:50,000
DATE:	2016-01-23
SHEET:	B-34

**POTENTIAL LIQUEFACTION
FACILITY SITING
LOCATIONS**

B-34 NORTH FORELAND (TYONEK)

ALASKA LNG

Major Pipeline Delivery Options Overview Map



LEGEND

- Project Facility
- Alaska Place Names
- Cook Inlet Pipeline Delivery Alternatives
- Valdez Pipeline Delivery Alternative
- Seward Route
- Major Highways
- Major Rivers
- State and Federal Conservation Lands

0 40 80 160 Miles

DISCLAIMER

The information contained herein is for informational or planning purposes only. It does not nor should it be deemed to be an offer, request or proposals for rights or occupation of any kind. The Alaska LNG Project Participants and their respective officers, employees and agents, make no warranty, implied or otherwise, nor accept any liability, as to the accuracy or completeness of the information contained in these documents, drawings or electronic files. Do not remove or delete this note from document, drawing or electronic file.

PREPARED BY:	EXP ENERGY SERVICES INC.
SCALE:	1:6,000,000
DATE:	2016-01-23
SHEET:	B-36

ROUTE ALTERNATIVES OVERVIEW

B-36

ALASKA LNG