

## Alaska LNG

Steve Butt

November 2014

# Project Overview

## Project has progressed beyond any previous effort

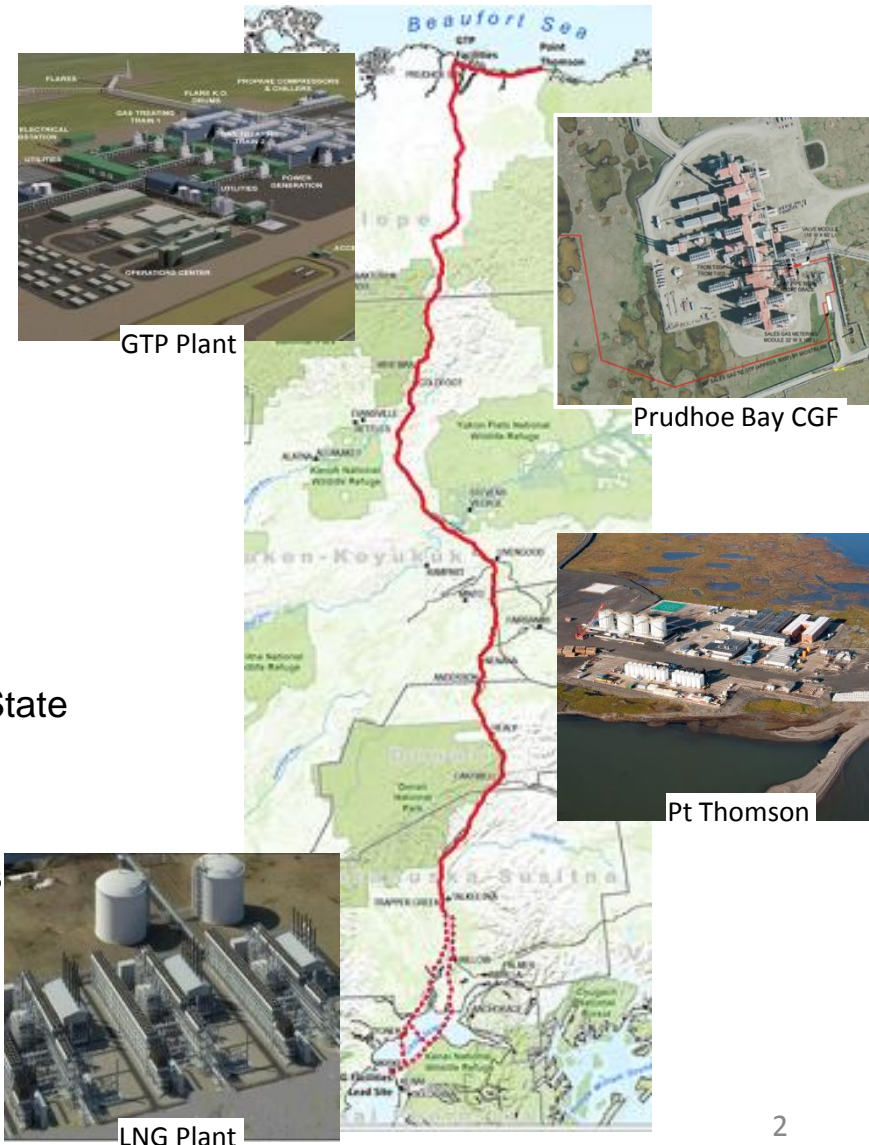
- ✧ Heads of Agreement completed January, 2014
- ✧ SB-138 confirmed State equity participation
- ✧ Initiated pre-FEED work in July, 2014

## Alaska LNG is an integrated LNG project

- ✧ Liquefaction allows broad LNG market access
- ✧ Pipeline system provides access to gas for Alaskans

## Key Elements of Success (“ARC”)

- ✧ *Alignment* – all participants are owners of the gas – State of Alaska *plus* Producers
- ✧ *Risk* – Identify / mitigate risks
- ✧ *Cost* - Lowest “cost of supply” = competitive success



# Project Design Progress

## Project team in place, performing well

- ✧ 130+ people from CoV organizations
- ✧ Strong experience (800+ yrs, 300+ MTA)
- ✧ Co-located in Anchorage, Calgary, Houston

## Pre-FEED Basis Confirmed

- ✧ GTP design optimized for three trains
- ✧ Initial pipeline routing work complete
- ✧ LNG site design progressing well

## Path forward

- ✧ Optimize design in pre-FEED
- ✧ Confirm cost, schedule basis - FEED decision
- ✧ Finalize pipeline route / design
- ✧ Confirm GTP, LNG site suitability
- ✧ Work with State to identify offtake locations



# Gas Treatment Plant Video

---



# Map of Gas Treatment Plant

---



Basemap



Enter address

**Immersive Video Widget**

MP0-MP22

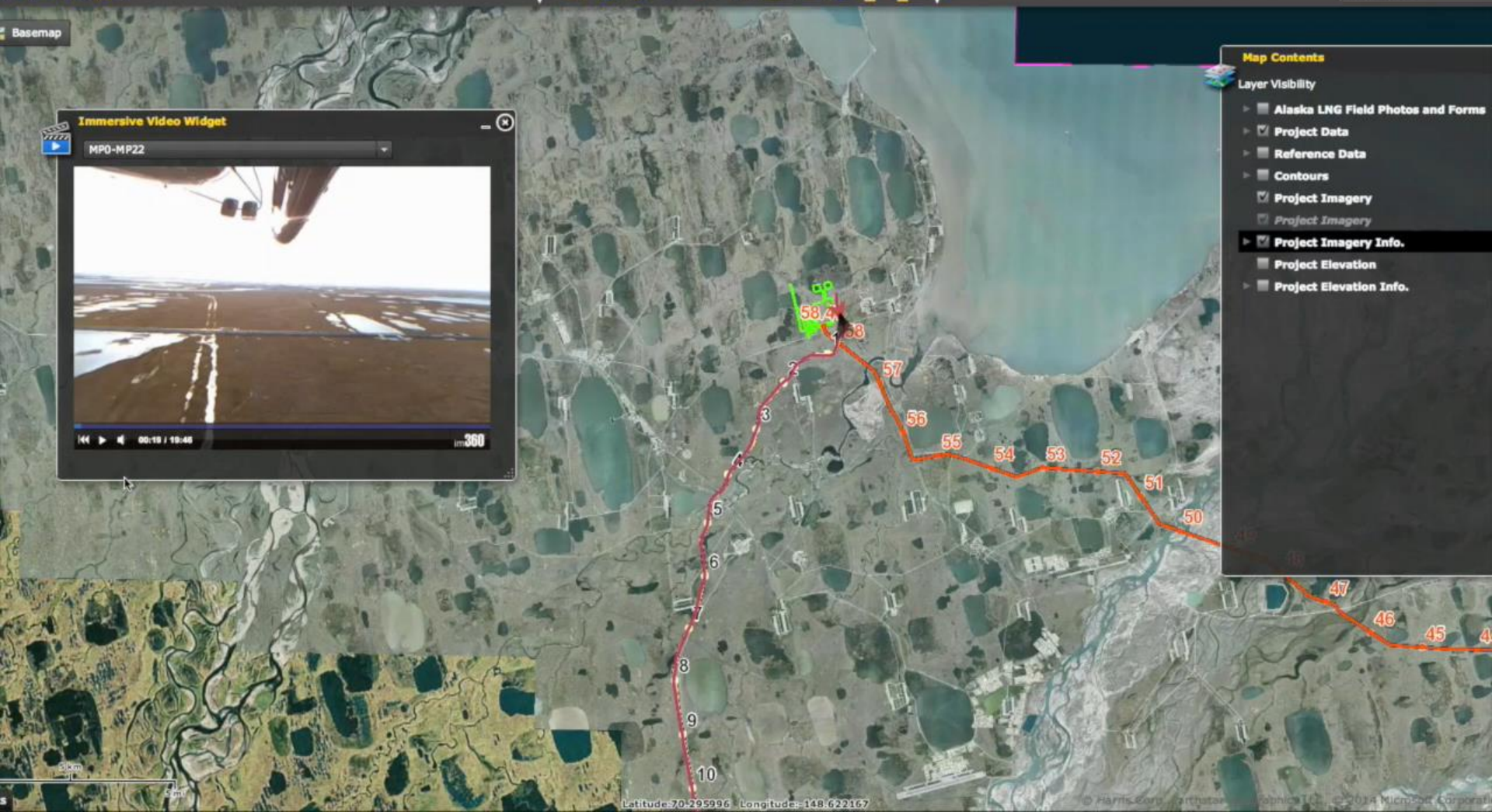
00:15 / 10:40

360

**Map Contents**

Layer Visibility

- ☐ Alaska LNG Field Photos and Forms
- ☒ Project Data
- ☐ Reference Data
- ☐ Contours
- ☒ Project Imagery
- ☐ Project Imagery
- ☒ Project Imagery Info.
- ☐ Project Elevation
- ☐ Project Elevation Info.



# Pipeline Route Video

---





# LNG Site Video

---



# Rig Video

---





011 HD  
KTVA.COM



# Mapping the Cook Inlet Video

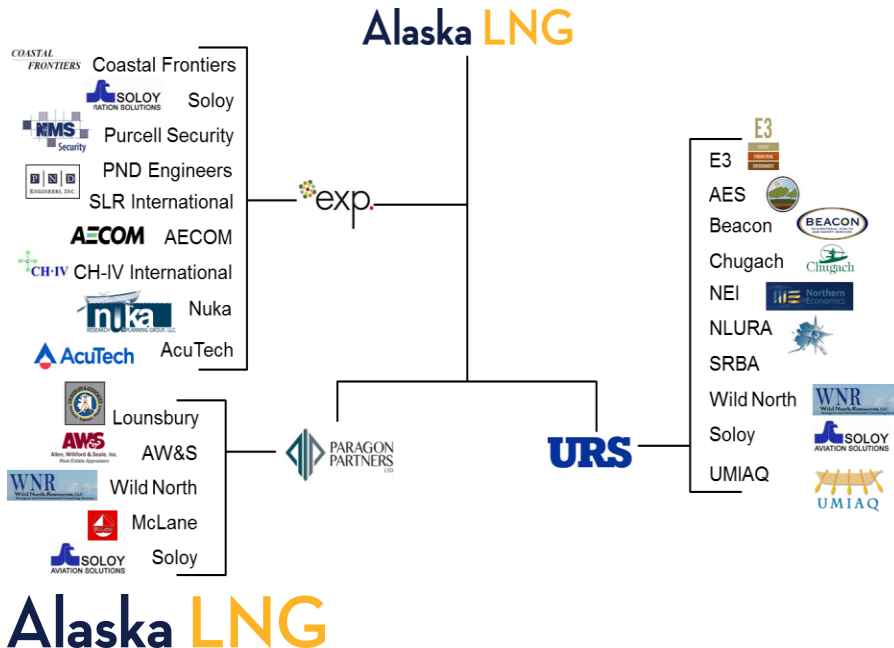
---



**11** HD  
KTVA.COM

# Permitting / Regulatory Progress

- ✧ DoE export application posted to Federal Register
  - Critical milestone for Project
  - Alaska outside L48 permit process
- ✧ Working with FERC and other regulators to secure required permits – NEPA / EIS reports in process
- ✧ Initiated community consultation, will continue community meetings with FERC engagement
- ✧ Completed 2014 Summer Field Season work to acquire regulatory data (250+ people, 80% Alaskans)



# Summer Field Study Video

---





# Community Engagement Video

---



TED AND CATHERINE STEVENS  
CENTER FOR  
SCIENCE AND TECHNOLOGY  
EDUCATION

**11** HD  
KTVA.COM

# Alaska LNG Engagement

## Pre-FEED Contracting Engagement -

- ✦ Contracts awarded for GTP, Pipeline, LNG, Marine
  - GTP – URS / CB&I / AES
  - Pipeline – Worley Parsons
  - LNG Plant – CB&I / Chiyoda / AES
  - Marine – CH2MHill
- ✦ Related work scopes in progress, contracting required
- ✦ Supplier engagement workshops in early 2015
- ✦ Interested contractors can register at "[ak-lng.com](http://ak-lng.com)"

## Individual Engagement Opportunities -

- ✦ FERC pre-file process underway
- ✦ Attend community meetings – talk with FERC
- ✦ Learn about the HoA and SB-138
- ✦ Talk with your legislators

## Alaska LNG Web Site "ak-lng.com"

**Fueling Alaska's Future**

The Alaska LNG Project is about innovative people and technology coming together to develop Alaska's vast natural gas resources in a safe and efficient manner and about providing access to natural gas to Alaskans. The project's participants are the Alaska Gasline Development Corporation (AGDC) and affiliates of TransCanada, BP, ConocoPhillips, and ExxonMobil.

**Project Map**

The Alaska LNG Project is anchored by the Prudhoe Bay and Point Thomson fields. These fields are expected to deliver on average about 3.5 billion cubic feet of gas per day with about 75% from the Prudhoe Bay field and 25% from the Point Thomson field.

An 800-mile pipeline will use proven technologies that enable safe operations while minimizing impact to the environment.

Nikiski is the lead site for a liquefaction plant where gas will be cooled and condensed to 1/600th of its previous volume.

The map shows the project route from Prudhoe Bay in the north to Nikiski in the south, passing through Fairbanks and Anchorage. Key locations marked include Prudhoe Bay, Livengood, Fairbanks, Anchorage, and Nikiski. A green line indicates the proposed pipeline route, and a blue line indicates the highway. The state of Alaska is labeled.